

ALDWYCH THEATRE

Aldwych · W.C.2

Managing Director - - - - PRINCE LITTLER
Licensed by the Lord Chamberlain to D. A. ABRAHAMS
General Manager - - - - FREDERICK CARTER

TENNENT PRODUCTIONS LTD.

present

**DIANA
CHURCHILL**

**ALEC
GUINNESS**

in

UNDER THE SYCAMORE TREE

6

A Farcical Fable

by

SAM SPEWACK

First Performance Wednesday, 23rd April, 1952
Evenings: MONDAY to FRIDAY at 7.30 p.m.
SATURDAY at 5.40 and 8.30 p.m.
Matinee: WEDNESDAY at 2.30 p.m.

APOLLO THEATRE

SHAFTESBURY AVENUE, W.1

BOX OFFICE

GERrard 2663

GEORGE & ALFRED BLACK
and
H. M. TENNENT LTD.
present

SEAGULLS OVER SORRENTO

by HUGH HASTINGS

EVENINGS at 7.0 SATURDAY at 5.30 and 8.30
MATINEE: THURSDAY at 2.30

ST. JAMES'S THEATRE

KING STREET, S.W.1

Telephone: WHItchall 3903



MICHAEL REDGRAVE
GOOGIE WITHERS
SAM WANAMAKER
in
**WINTER
JOURNEY**

by CLIFFORD ODETS

"AS SOON AS I CAN I SHALL
GO AGAIN"—

John Barber, *Daily Express*.

ALDWYCH THEATRE

Aldwych - W.C.2

Managing Director - PRINCE LITTLER
Licensed by the Lord Chamberlain to D. A. ABRAHAMS
General Manager - FREDERICK CARTER

TENNENT PRODUCTIONS LTD.

present

DIANA
CHURCHILL

ALEC
GUINNESS

in

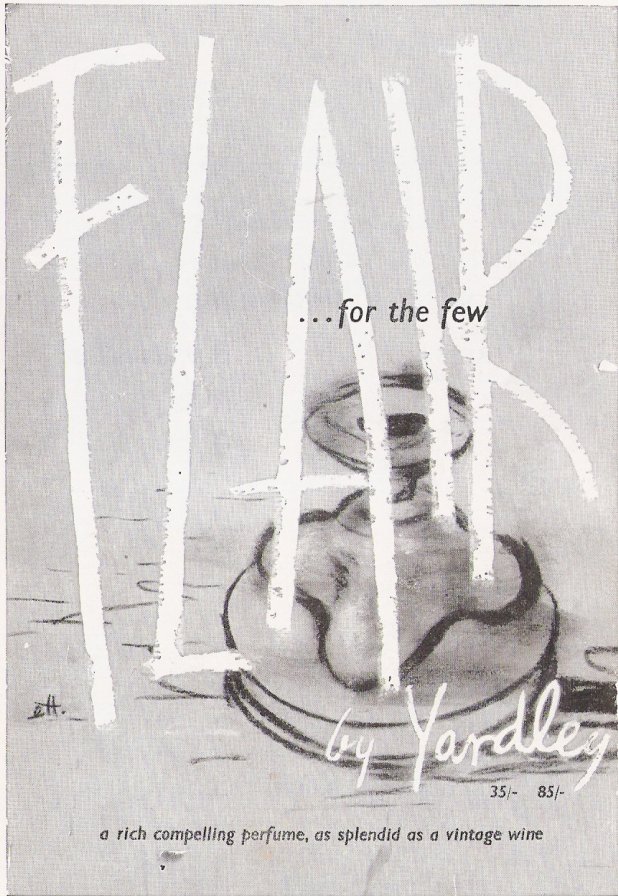
UNDER THE SYCAMORE TREE

A Farcical Fable

by

SAM SPEWACK

In accordance with the requirements of the Lord Chamberlain—1.—The public may leave at the end of the performance by all exit doors and such doors must at that time be open. 2.—All gangways, passages and staircases must be kept entirely free from chairs or any other obstructions. 3.—Persons shall not in any circumstances be permitted to stand or sit in any of the gangways intersecting the seating, or to sit in any of the other gangways. If standing be permitted in the gangways at the sides and rear of the seating, it shall be strictly limited to the number indicated in the notices exhibited in those positions. 4.—The safety curtain must be lowered and raised in the presence of each audience.



TENNENT PRODUCTIONS LTD.

present

UNDER THE SYCAMORE TREE

A Farcical Fable

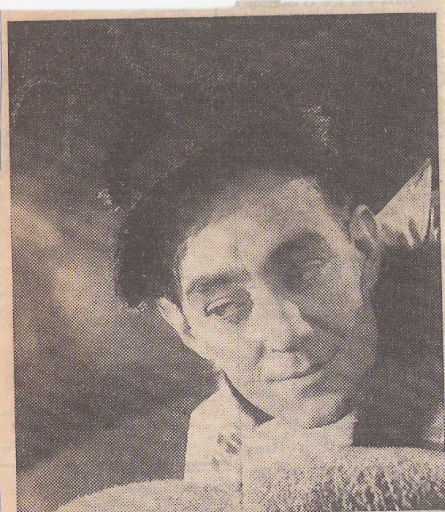
by

SAM SPEWACK

Characters in order of their appearance :

The Queen	DIANA CHURCHILL
The Chief Statistician	ERNEST THESIGER
The Scientist	ALEC GUINNESS
The General	PETER BULL
The Boy	ERIC PORTER
The Girl	DAPHNE ANDERSON
Brown Ant	MAX BRIMMELL
Boy Junior	ERIC PORTER
Girl Junior...	DAPHNE ANDERSON
		JOHN BUSHELLE
		MADI HEDD
Workers	CYRIL SAXON
		DENIS WEBB

The play produced by PETER GLENVILLE
 Setting and Costumes by OLIVER MESSEL
 Music composed by Ronald Emanuel



Alec Guinness as the Scientist in "Under the Sycamore Tree" at the Aldwych

H. M. TENNENT LTD

APOLLO

GEORGE & ALFRED BLACK and H. M. TENNENT LTD. present
SEAGULLS OVER SORRENTO
By HUGH HASTINGS

CRITERION

Opening Tuesday, 20th May, for a six week's season
RUTH DRAPER

DUCHESS

PEGGY ASHCROFT
THE DEEP BLUE SEA
By TERENCE RATTIGAN
ROLAND CULVER

LYRIC

THE LITTLE HUT
A Light Comedy by ANDRE ROUSSIN Adapted by NANCY MITFORD

PICCADILLY

Opening Wednesday, 11th June.
WILFRED PICKLES
THE GAY DOG
A Farcical Comedy

SAVOY

GLADYS COOPER, JUDY CAMPBELL and ANGELA BADDELEY
RELATIVE VALUES
A Light Comedy by NOEL COWARD

ALDWYCH

TENNENT PRODUCTIONS LTD.
DIANA CHURCHILL ALEC GUINNESS
UNDER THE SYCAMORE TREE
A Farcical Fable by SAM SPEWACK

GLOBE

Definitely closing Saturday, 28th June.
THE LYRIC REVUE

HAYMARKET

WATERS OF THE MOON
By N. C. HUNTER

PHOENIX

Definitely closing Saturday, 2nd August.
By arrangement with the SHAKESPEARE MEMORIAL THEATRE
JOHN GIELGUD DIANA WYNYARD
and PAUL SCOFIELD
MUCH ADO ABOUT NOTHING
By WILLIAM SHAKESPEARE

LYRIC, HAMMERSMITH

TRELAWNEY OF THE "WELLS"
A Comedietta by ARTHUR PINERO

Printed by Henry Good & Son, Ltd., London, E.C.4—230452