

ADELPHI THEATRE

STRAND W.C.2 Sole Proprietors: J. & R. Gatti. TELEPHONE: TEMple 7611
Lessees Musical Plays Ltd. Licensed by the Lord Chamberlain to Jack Hylton

For Times of Performances see Daily Press

By arrangement with JACK HYLTON

IN ASSOCIATION with ANTHONY VIVIAN

CHARLES B. COCHRAN'S

BLESS THE BRIDE

A Musical Show

by

A. P. HERBERT

with music by

VIVIAN ELLIS

T. Moisewitsch

ALL THE DRESSES IN
'Bless the Bride'
ARE MADE FROM

'Celanese'
TRADE MARK
that's the Beauty of it!

Behind the footlights, the extravagance of a glorious past has been brilliantly evoked by the beauty of 'Celanese' Fabrics. Nevertheless these are essentially Modern Fabrics—they belong to a fashion-world where clean-cut lovely lines emphasize their unusual beauty of texture. We hope that before long 'Celanese' Fabrics will be more freely available in the shops.



Lucy's dress in Act 2, reproduced from the original drawing by Tanya Moiseiwitsch.

IN ASSOCIATION WITH ANTHONY VIVIAN
CHARLES B. COCHRAN'S

BLESS THE BRIDE

A MUSICAL SHOW

By

A. P. HERBERT and VIVIAN ELLIS

Directed by WENDY TOYE

LOUIS LEVY'S THEATRE ORCHESTRA

Conducted by MICHAEL COLLINS

Costumes and Scenery designed by
TANYA MOISEWITSCH

Characters in order of their appearance :

Alice Charity Willow	DIANA BEALL
Cousin George	STEWART VARTAN
Archdeacon Gurney	GWILYM JONES
Lucy Veracity Willow	LIZBETH WEBB
The Honourable Thomas Trout	BRIAN REECE
Ann Fidelity	JOAN ELVIN
Charlotte Patience	} Lucy's Sisters	PAMELA CARROLL
Elizabeth Prudence		WINIFRED HAMMICK
Frances Fortitude		MILDRED GRIFFITHS
Millicent Punctuality		NATASHA WILLS
Pierre Fontaine	EDMUND GOFFRON
Suzanne Valois	BETTY PAUL
Augustus Willow (Lucy's Father)	ERIC FORT
Mary Willow (Lucy's Mother)	EDNA CLEMENT
Albert Willow (Augustus's Father)	JAMES HARCOURT
Harriet Willow (Grandmamma)	HEBE BLISS
Nanny	ANONA WINN
Buttons	BABATUNDE MACAULAY
First Gendarme	ALLAN BOURNE WEBB
Second Gendarme	VINCENT CHARLES
M. Robert (Maitre d'Hotel, Cafe des Pommes)	PETER LUPINO
Waiters	TOMMY HUDSON, DOUGLAS ORR
Marie Duval	MARIANNE JUER
1st Customer	GERALD ANTHONY
2nd Customer	RICHARD AUBREY
Mons. Frontenac	PETER DIMUANTES
News-bearer	PHILIP LEWTAS

Corps de Ballet—Ladies : BETTY BARNES, DIANA BEALL, PAMELA CARROLL, JANET ALBISSER, VERA ELLIS, JOAN ELVIN, MILDRED GRIFFITHS, WINIFRED HAMMICK, MARY REYNOLDS, DORIA VENNARD, PATRICIA BROOKS, NATASHA WILLS

Gentlemen : TOMMY HUDSON, DAVID LATOFF, PETER LUPINO, DOUGLAS ORR, REG TAYLOR, JOHN TURNER

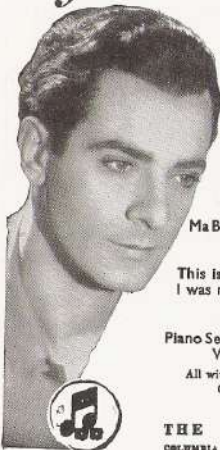
"BLESS THE BRIDE"
THE MUSIC

THIS IS MY LOVELY DAY
MA BELLE MARGUERITE
I WAS NEVER KISSED BEFORE
DUCKY PIANO SELECTION
VOCAL SCORE
Words by A. P. Herbert Music by Vivian Ellis

PUBLISHED BY
CHAPPELL
50 New Bond St., London, W.1

ON SALE IN THIS THEATRE

Georges Guétary



SINGS THE HIT TUNES FROM
"Bless the Bride"

ON
COLUMBIA
RECORDS

Ma Belle Marguerite; Table for Two DB 2301

with LIZBETH WEBB

This is my Lovely Day } DB 2302
I was never kissed Before }

★

Piano Selection — "Bless the Bride"
VIVIAN ELLIS — DX 1396

All with the Adelphi Theatre Orchestra
Conductor: Michael Collins



THE FINEST NAME ON RECORD
COLUMBIA GRAPHOPHONE COMPANY LIMITED, HAYES, MIDDLESEX

Chorus—*Ladies*: PHYLLIS BRIDGEWATER, JOANNA COCHRANE, JOAN KAYE, ANN GARDINER, HILDA GOODMAN, LEONIE HODGE, TILLY HOLLAND, LORNA LEE, MARY TURNER, MARY NORTON, MIMI PIPER, MARGARET SEWARD, EVELYN SPERO, QUEENIE TAYLOR

Gentlemen: GERALD ANTHONY, RICHARD AUBREY, VINCENT CHARLES, HERBERT GARRY, GWILYM JONES, PHILIP LEWTAS, FRANK O'CONNOR, CYRIL TURNIDGE, MICHAEL STOLLER, ALLAN BOURNE WEBB, RIDGWAY WEST, JAMES ARMSTRONG

Production Manager FRED WILBY

SCENES:

ACT I

- Scene 1. The Grange, Mayfield. The Lawn
- Scene 2. The Grange, Mayfield. A Shrubbery
- Scene 3. The Grange, Mayfield. The Hall
- Scene 4. Lucy's Nursery
- Scene 5. The Hall
(Period: July, 1870)

ACT II

- Scene 1. La Plage, Eauville
- Scene 2. A Street, Eauville
- Scene 3. The Cafe des Pommes, Eauville
(Period: July, 1870)
- Scene 4. The Grange, Mayfield.
- Scene 5. The Hall
(Period: March, 1871)

MUSICAL NUMBERS:

Overture THE ORCHESTRA

ACT

- Scene 1—
- "Croquet—Croquet" THE COMPANY
 - "Too Good to be True" THOMAS TROUT
 - "Thomas T." LUCY
 - "En Angleterre" SUZANNE, PIERRE, and THOMAS
 - "Oh! What will Mother say?" THE COMPANY
 - "My Little Loo" AUGUSTUS, MARY, and LUCY
- Scene 2—
- "I Was Never Kissed Before" LUCY, PIERRE, and SUZANNE
- Scene 3—
- "Where is the Times?" THE COMPANY
 - "Come, Dance, My Dear" THE COMPANY
 - "The Silent Heart" LUCY
 - "Ma Belle Marguerite" PIERRE
 - "God Bless the Family" THE COMPANY
- Scene 4—
- "Ducky" NANNY
 - "Bless the Bride" THE FAMILY
- Scene 5—
- Finale THE COMPANY

ACT II

Scene 1—
 " Bobbing—Bobbing " THE COMPANY
 " Mon Pauvre Petit Pierre " SUZANNE, LUCY, and PIERRE

Scene 2—
 " The Englishman " THOMAS, AUGUSTUS, MARY, and GEORGE

Scene 3—
 " Un Consomme " MARTEL and WAITERS
 " A Table for Two " PIERRE
 " This is my Lovely Day " LUCY and PIERRE
 " The Fish " ROBERT
 " To France " PIERRE and COMPANY

Scene 4—
 " Twenty-one Candles " NANNY and THE SISTERS

Scene 5—
 " Here's a Kiss for One-and-twenty " THE SISTERS
 " My Big Moment " THOMAS

Finale THE COMPANY

Orchestrations by PHIL CARDEW. Chorus trained by MICHAEL COLLINS
 The music published by CHAPPELL

FABRICS FOR ALL COSTUMES, CURTAINS, UPHOLSTERY,
 AND GLOVES, ARE MADE FROM CELANESE MATERIAL

Scenery painted by Alick Johnstone. Built by Brunskill & Loveday

All ladies' costumes and hats by Therese. Gloves by Mme. Crystal and W. Pinkham & Son Ltd. Nylons by Kayser Bondor. Act II, Scene 1, bathing costumes by Alick Shanks. Fans by Duvelleroy. Ladies' Gaiters by A. J. Matthews. Waitresses costumes by Joan Dunbar. Parasols by James Smith & Sons. Jewellery by Harlequin. Men's clothes by Morris Angel and C. L. Samuels. Men's shoes by Gamba. Ladies' shoes by Frederick Freed. Hair styles and wigs by Wig Creations. Sound equipment by Bishop Sound. Flowers by Windrams. Furniture by Old Times Co. Electrical equipment by Strand Electric Co. 1870 lawn tennis equipment by Sizengers, Ltd. 1870 croquet equipment by Ayres Sports Goods, Ltd. The number " Table for Two " appeared in *Funch* and is used by permission of the Proprietors. The restaurant equipment has been selected on the kind advice of M. Andre Simon. Lamps by Mizda

General Manager	for CHARLES B. COCHRAN	FRED WILBY
Stage Director		CLIFFORD SPURR
Assistant Stage Director		JOAN CRAFT
Chief Mistress		VERA LAVROVA
Wardrobe Mistress		ZENA DUNCAN-SMITH
Hairdresser	RUTH ECOB	
Press Representative	RAYMOND MOULD	
Manager	(For Adelphi Theatre)	A. E. WARREN
Box Office: A. WASHER	Open 10 a.m. to 7.30 p.m.	TEMPLE Bar 7611

The Management reserves the right to refuse admission, also to make any alteration in the cast which may be rendered necessary by illness or other unavoidable causes.

Patrons are reminded that the taking of photographs during the performance is not allowed.

Ladies are earnestly requested to remove Hats or any kind of Head dress. The rule is framed for the benefit of the audience and the Management trusts that it will appeal to everybody, and that Ladies will kindly assist by having it carried out.

Patrons are respectfully requested to refrain from smoking

In accordance with the requirements of the Lord Chamberlain—1.—The public may leave at the end of the performance by all exit doors and such doors must at that time be open. 2.—All gangways, passages, staircases must be kept entirely free from chairs or any other obstructions. 3.—Persons shall not in any circumstances be permitted to stand or sit in any of the gangways intersecting the seating, or to sit in any of the other gangways. If standing be permitted in the gangways at the sides and rear of the seating it shall be strictly limited to the number indicated in the notices exhibited in those positions. 4.—The safety curtain must be lowered and raised in the presence of each audience

Jack Hylton presents

HIS MAJESTY'S
 HAYMARKET, S.W.1

HILDA SIMMS FREDK O'NEAL
 IN

ANNA LUCASTA

New York's Most Intriguing
 Comedy Drama

ORIGINAL BROADWAY
 CAST

VICTORIA PALACE

The Crazy Gang
 NERVO NAUGHTON
 & KNOX GOLD

BUD FLANAGAN
 IN

TOGETHER
 AGAIN

A New Musical

For Times of Performances See Daily Press

T & G

Telephone: TEM. 3947-8

We are Sole Agents for the following
 London Theatre Programmes:

ADELPHI GLOBE
 ALDWYCH HIS MAJESTY'S
 APOLLO LYRIC
 CAMBRIDGE PHOENIX
 CASINO PRINCES
 COMEDY SCALA
 FORTUNE ST. JAMES'S
 THEATRE ROYAL,
 DRURY LANE
 WINTER GARDEN

THEATRICAL and GENERAL
 ADVERTISING COMPANY LTD

27 JOHN ADAM ST., W.C.2

QUEEN'S
 HOTEL

HASTINGS SUSSEX

UNRIVALLED POSITION ON
 PROMENADE

General Manager: ROBERT LEHNER
 Telephone: Hastings 4167
 Telegrams: Queens Hastings

The Ideal spot for all holidays including Easter
 and Christmas.

Central Heating, hot and cold water and
 telephones in all bedrooms.

GLOUCESTER RESTAURANT—one of
 the finest on the South Coast.

BALLROOM AMERICAN BAR
 PICCOLO BAR

Excellent facilities for Banquets,
 Conferences, Wedding Receptions, etc.

Within easy reach of Golf, Angling, Riding,
 Tennis. Two minutes from Medicinal Baths
 and Station.

Write for Tariff
 En pension terms from 27/6 per day

LINNIT & DUNFEE LTD. PRODUCTIONS

ALDWYCH THEATRE

RAYMOND LOVELL
IRIS HOEY

JANE BAXTER
JACQUES BERTHIER

in
AMBASSADOR EXTRAORDINARY

A new comedy by W. DOUGLAS HOME (Author of "The Chiltern Hundreds")

AMBASSADORS THEATRE

JOAN
HAYTHORNE
ARNOLD
BELL

LIONEL
MURTON
JEANETTE
TREGARTHEN

in
LITTLE LAMBS EAT IVY

A comedy by NOEL LANGLEY

FORTUNE THEATRE

(In association with Alec Rea and E. P. Clift)

WALTER FITZGERALD
RACHEL KEMPSON

HUGH BURDEN
ARTHUR WONTNER

in
THE PARAGON

By ROLAND and MICHAEL PERTWEE

STRAND THEATRE

YOLANDE DONLAN

in
NOEL LANGLEY'S

CAGE ME A PEACOCK

A new musical

Directed by Charles Hickman

VAUDEVILLE THEATRE

A. E. MATTHEWS
MARJORIE FIELDING

MICHAEL SHEPLEY

in
THE CHILTERN HUNDREDS

A comedy by W. DOUGLAS HOME

(For times of performances see announcements in the Press)

Printed by Henry Good & Son Ltd., London, E.C.4—260447