

PRINCES
THEATRE
BRADFORD

HARRY HANSON'S

FAMOUS.

Court Players

PROGRAMME

GREENWOOD & CO.

14, HALL INGS, BRADFORD, 1
Telephone : 27978

Why not call and see our large range of Fents, Suitings, Linings and Silks ?

Also Fitted Carpets and Squares
Reasonable Prices (Estimates Free)



2 MARKET STREET
BRADFORD

Furniture packed for Shipment
(EXPERT SERVICE) Tel. 27070

BEFORE OR AFTER THE SHOW
CALL AT THE

MAJESTIC HOTEL

½ minute walk from this Theatre

WEBSTER'S FINE ALES

Purity in what we Drink

Grape Fruit Crush, Orange Crush,
Lemon Crush, Sparkling Lemonade,
Sparkling Limes

Made from the Fresh Fruits

F. M. RIMMINGTON & SON
LTD. Phone 26611

9-11, Bridge Street, Bradford

A. Atkinson & Son

Sanitary Engineers, Plumbers,
Glaziers, etc.

177, MANCHESTER ROAD
BRADFORD

Telephone 24979

COAL AND COKE

HARGREAVES (West Riding)
LIMITED

237 Manchester Rd., Bradford
and L.N.E. Clayton Station

Phones : Bfd 27969. Qby. 783128



THERE'S
**MORE IN
MELBOURNE ALES**

REFRESHMENT BARS

*in the
Lounge, Dress Circle
Stalls and Upper Circle*

COFFEE AND ICES

*obtainable from
the Attendants*

*All the popular
brands of CHOCOLATES*

*on sale in the
foyer and bars*

PRINCE'S THEATRE BRADFORD

Managing Director : GWLADYS STANLEY LAIDLER, M.B.E.
Secretary: ROWLAND HILL Acting Manager: THOMAS SUNTER

MONDAY, MARCH 4th, and during the week

Twice Nightly at 5.45 and 8.0 p.m.

HARRY HANSON

(For Penge Court Players Ltd.)

presents

The Court Players

in

"STRANGE REQUEST"

By R. Bruce Walker

WEEK COMMENCING MONDAY, MARCH 4th, 1957

The Court Players
in
"STRANGE REQUEST"
By R. Bruce Walker

Characters:

(in the order of their appearance)

Julia Green JILL HIXON
George Green MARTIN CARROLL
Mrs. Sullivan KATHLEEN PICKARD
Mrs. Piper JEAN KITSON
Irene Turner ANN KENNEDY
Kathleen O'Neil MARY BROPHY
Michael Moore AUSTIN STEELE
Detective Inspector Grant BRIAN CULLIS
Detective Sergeant Harper BRIAN HEWITT-JONES

Synopsis of Scenes:

The action of the play takes place in George Green's house in Holland Park, London.

ACT ONE.

Scene 1. Late afternoon in Autumn.
Scene 2. Six o'clock on a Winter's evening. One year later.
Scene 3. Two hours later.

Interval.

ACT TWO.

11. 30 the next morning.

Interval.

ACT THREE.

Scene 1. Four o'clock in the evening one week later.
Scene 2. Ten o'clock the same evening.

We are indebted to—

Filby's of John Street for Electrical Fittings. Barber's of Broadway for Leather Goods. Howarth and Buckley, Aldermanbury for Glassware. Strike's of North Parade for Flowers. Heppleston's of Rawsen Square for China. Swears and Wells for Ladies' Furs. Dorothy Shaw of Ivegate for Ladies' Hats.
Nylon Stockings by Kayser. Telephone by G.P.O.
Olivier Cigarettes by Benson and Hedges.

THE PLAY PRODUCED BY DOEL LUSCOMBE

The Settings designed and painted by CLARENCE RAYNER
Constructed by HARRY SPEED

Stage Director RONALD ELMS
Stage Manager DOREEN BOWER

(For Harry Hanson)

The Management reserve the right to make any alteration in the cast which may be rendered necessary by illness or other cause.

At the Piano: ARCHIE MOZLEY who will play:
Romantic Rhapsody (Felton Rapley) : Gipsy Love (Lehar)
Valses (Chopin)

NEXT WEEK: The Laughter Success

"IT'S A WISE CHILD"
(by arrangement with Emile Littler Ltd.)

By Larry Johnson

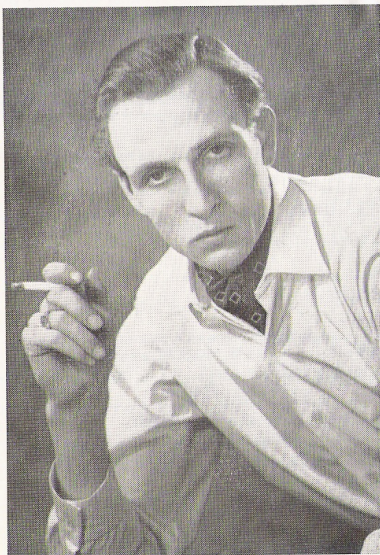
Box Office open 9.30 a.m. to 8.0 p.m.

Telephone : 24788

ABOUT NEXT WEEK'S PLAY

"IT'S A WISE CHILD" which Harry Hanson is presenting next week for your entertainment, is a very well known comedy by Larry Johnson, and has played with great success at most leading theatres in the country.

The essence of any good comedy is a first class story, amusing situations in abundance, and characters who make the whole thing possible. All this is to be found in "It's a Wise Child." To explain the plot in any way would be to spoil the enjoyment of all who wish for a perfect evening's entertainment.



BRIAN HEWITT-JONES

Central Garage Ltd.
RANDALL WELL STREET

USED CAR SPECIALISTS

Ring Bradford 22271

PERMANENT BOOKINGS

If you have liked the "COURT PLAYERS" and wish to have a seat booked every week, kindly give your name in to the booking office.

The same seat will then be reserved for you each week unless we hear from you to the contrary.

(Also ask about the "free seat" vouchers.)

The Manager and Staff are at your service

We wish to please you, but should you have any complaint, kindly report it to the manager.

YOUR RECEPTIONS
PARTIES
DINNERS
DANCES
WELL LOOKED AFTER
AT

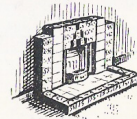
Betty's Cafes
LTD.

DARLEY STREET,
BRADFORD

BETTY'S CAFES LTD.
Harrogate, Leeds, Bradford and York

MOLLETT
"Quality" FIREPLACE

Highest Reputation Finest Quality
Lowest Price Easiest Deferred Terms



JOHN MOLLETT LTD.
Darley Street, Bradford

Also at Keighley, Halifax, Huddersfield & Leeds



Portrait by

Bergson

STUDIO JORIK
225
Manningham Lane
Phone Bfd. 29033
Makers of
Fine Portraits



Beer!
Tetley's
ON SALE
AT THE
Bar



*A Pleasant Evening
made more enjoyable -*

DRINK
HAMMONDS

Guards Ale
and EXPORT Unity

ON SALE IN THE THEATRE BARS

HAMMONDS UNITED BREWERIES LIMITED

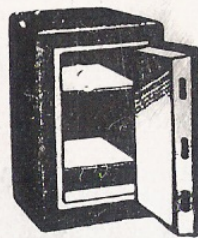
CLIFFE CAFE

38 KIRKGATE MARKET

for

BEST QUALITY FOOD

LUNCHES 11.0 a.m. — 1.45 p.m.
TEAS 2.45 p.m. — 5.45 p.m.



SAFES

*New and Second Hand
All Makes. All Sizes.
Library & Office Desks.
Filing Cabinets, Cup-
boards, Sectional Book-
cases, Office Chairs
Tables, etc.
IMMENSE STOCKS.*

RICHARDSONS

72/74, LEEDS ROAD, BRADFORD

Read The
Telegraph & Argus
EVERY EVENING

THE
COUNTY SCHOOL OF MOTORING

DEVONSHIRE
HOUSE,
NORTH PARADE
BRADFORD 1



FULLY
QUALIFIED
INSTRUCTORS
(By examination)

MODERN DUAL-CONTROL CARS

Planned Courses
Prospectus on application
Instruction Centres Bradford and
Keighley

'Phone 24753 Bradford



Direct from
West-End Cabaret
at the
CLUB PANAMA
Piccadilly Circus

London's Yorkshire
Illusionist
The Amazing
DIVAD

Now available for
DINNERS
CABARET
REVUE
CONCERTS, etc.

43, PULLAN AVENUE, ECCLESHILL,
BRADFORD, 2, Yorks. 'Phone Bfd. 38093