

PRINCE'S  
THEATRE  
BRADFORD

HARRY HANSON'S

FAMOUS.

Court Players

PROGRAMME

## GREENWOOD & CO.

14, HALL INGS, BRADFORD, 1  
Telephone : 27978

Why not call and see our large range of Fents, Suitings, Linings and Silks?

Also Fitted Carpets and Squares  
Reasonable Prices (Estimates Free)



2 MARKET STREET  
BRADFORD

Furniture packed for Shipment  
(EXPERT SERVICE) Tel. 27070

BEFORE OR AFTER THE SHOW  
CALL AT THE

**MAJESTIC HOTEL**

½ minute walk from this Theatre

## WEBSTER'S FINE ALES

### Purity in what we Drink

Grape Fruit Crush, Orange Crush,  
Lemon Crush, Sparkling Lemonade,  
Sparkling Limes

Made from the Fresh Fruits

**F. M. RIMMINGTON & SON**  
LTD. Phone 26611

9-11, Bridge Street, Bradford

## T. S. EMPSON & CO.

Sales, Service, Supplies

For all the leading makes of  
**TYPEWRITERS**

Phone : Bradford 23060

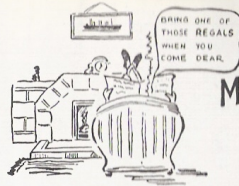
**COAL AND COKE**

## HARGREAVES (West Riding)

LIMITED  
Incorporating RHODES BROS. (Succrs.)

237 Manchester Rd., Bradford  
and L.N.E. Clayton Station

Phones : Bfd 27969. Qby. 783128



Melbourne  
Brewery  
Product

## PERMANENT BOOKINGS

*If you have liked the "COURT PLAYERS" and wish to have a seat booked every week, kindly give your name in to the booking office.*

*The same seat will then be reserved for you each week unless we hear from you to the contrary.*

*(Also ask about the "free seat" vouchers.)*

***The Manager  
and Staff are  
at your service***

*We wish to please you, but should you have any complaint, kindly report it to the manager.*

## PRINCE'S THEATRE BRADFORD

Managing Director : GWLADYS STANLEY LAIDLER, M.B.E.  
Secretary : ROWLAND HILL  
Manager : FRANK MITCHELL

MONDAY, JULY 16th and during the week

Twice Nightly at 5.45 and 8.0 p.m.

HARRY HANSON

(For Penge Court Players Ltd.)

presents

## The Court Players

in

## "THE SHOP AT SLY CORNER"

By Edward Percy

WEEK COMMENCING MONDAY, JULY 16th, 1956

## The Court Players

# “THE SHOP AT SLY CORNER”

By Edward Percy

### Cast:

Descius Heiss ..... DOEL LUSCOMBE  
Archie Fellowes ..... AUSTIN STEELE  
Margaret Heiss ..... ANN KENNEDY  
Joan Deal ..... MARY BROPHY  
Mathilde Heiss ..... SYLVIA MELVILLE  
Mrs. Catt ..... JEAN KITSON  
Robert Graham ..... BRIAN HEWITT-JONES  
Corder Morris ..... RONALD ELMS  
John Elliot ..... MARTIN CARROLL

### Synopsis of Scenes:

The action of the play takes place in a room at the back of a London shop.

#### ACT ONE

A Friday evening in August.

Interval

#### ACT TWO

A Sunday evening in the following winter.

Interval

#### ACT THREE

The following Tuesday morning.

#### We are indebted to:

Filby's of John Street for Electrical Fittings. Barber's of Broadway for Leather Goods. Strike's of North Parade for Flowers. Dorothy Shaw of Ivegate for Ladies' Hats. Swears and Wells for Ladies' Furs. Wm. Richardson, 72/74, Leeds Road for Office Safe. Nylon Stockings by Kayser. Telephone by G.P.O. Cigarettes by Senior Service.

THE PLAY PRODUCED BY DOEL LUSCOMBE

The Settings designed and painted by CLARENCE RAYNER  
Constructed by ERIC OSBORN

Stage Director ..... RONALD ELMS  
Stage Manager ..... DOREEN BOWER  
(For Harry Hanson)

At the Piano : ARCHIE MOZLEY who will play :  
Othello (Coleridge-Taylor) :: Songs from the Shows  
Tango—Rosa Argentina

The Management reserve the right to make any alteration in the cast which may be rendered necessary by illness or other cause.

NEXT WEEK : The Hilarious Comedy

## “ALL FOR MARY”

by Harold Brooke & Kay Bannerman

Box Office open 9.30 a.m. to 8.0 p.m.

Telephone : 24788

#### ABOUT NEXT WEEK'S PLAY

"ALL FOR MARY" by Harold Brooke and Kay Bannerman is a delightful comedy set in a hotel in the French Alps. The story is original—nearly everyone has experienced at some time or other, that peculiar sinking feeling when confronted (usually in an embarrassing moment) with a former school teacher, nurse or governess. Instantly one becomes again that insignificant imp unable to add two and two, who jibs at a spoonful of castor oil or indulges in the smallest fib. This situation is the main source of comedy in "ALL FOR MARY" from which spring the many delicious moments which so captivated audiences at London's Duke of York's theatre.

The original cast included Kathleen Harrison, David Tomlinson and Betty Paul, and was afterwards filmed very successfully with Nigel Patrick.

Here is a comedy which has been painted with broad, accurate strokes, full of warmth and sincerity which is certain to appeal to audiences of all ages.

#### HARRY HANSON

For twenty-five years a Tornado of the theatre! Twenty-five momentous years of contrast—of many failures, of many successes; of peace and of war; of depression and of prosperity. And above all, of twenty-five years' service to a particular public—the millions of Court Player fans from John o'Groats to Land's End. The acorn of Court Players which Harry Hanson planted at Hastings in 1931 has now taken the dimensions of a sturdy oak from which have sprung seasons at Peterborough, Leeds, Penzance, Sheffield, Westcliffe-on-sea, Nottingham, Chester, Hanley, Stockton-on-Tees, Camberwell, Lincoln, Keighley, Bradford to mention a few of the Cities and Towns where the name "The Court Players" is known and is happily remembered.



**NEWS FLASH!** George Woolley hopes to be back with us for "All for Mary". A letter from Richard Burnett this week. He wishes to be remembered to all his friends.

### Central Garage Ltd. RANDALL WELL STREET

USED CAR SPECIALISTS

Ring Bradford 22271

### REFRESHMENT BARS

*in the  
Lounge, Dress Circle  
Stalls and Upper Circle*

**COFFEE AND ICES**  
*obtainable from  
the Attendants*

*All the popular  
brands of CHOCOLATES  
on sale in the  
foyer and bars*

YOUR  
RECEPTIONS  
PARTIES  
DINNERS  
DANCES  
WELL LOOKED AFTER  
AT

*Betty's Cafes*  
LTD.

DARLEY STREET,  
BRADFORD

BETTY'S CAFES LTD.  
Harrogate, Leeds, Bradford and York



Beer!  
**Tetley's**  
ON SALE  
AT THE  
Bar

### BUTTERFIELD SIGNS LTD.

Neon & General Sign Manufacturers

161-165, WESTGATE,  
BRADFORD

Phone : 2 2 2 6 8 (3 Lines)



Portrait by

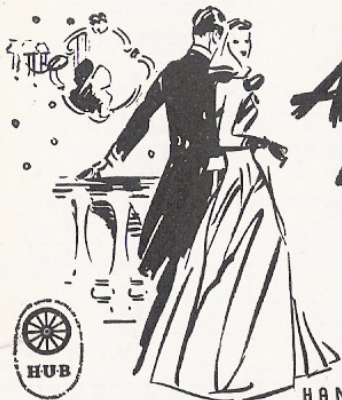
*Bergson*  
STUDIO JORIK  
225  
Manningham Lane  
Phone Bfd. 29033  
Makers of  
Fine Portraits

### A. Atkinson & Son

Sanitary Engineers, Plumbers,  
Glaziers, etc.

177, MANCHESTER ROAD  
BRADFORD

Telephone 24979



*A Pleasant Evening  
made more enjoyable -*

DRINK  
HAMMONDS

**Guards Ale**  
and EXPORT Unity

ON SALE IN THE THEATRE BARS

HAMMONDS UNITED BREWERIES LIMITED

**CLIFFE CAFE**

38 KIRKGATE MARKET

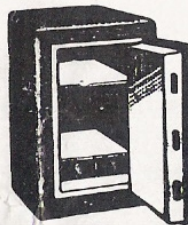
for

**BEST QUALITY FOOD**



LUNCHES 11.0 a.m. — 1.45 p.m.

TEAS 2.45 p.m. — 5.45 p.m.



**SAFES**

*New and Second Hand  
All Makes. All Sizes.  
Library & Office Desks.  
Filing Cabinets, Cup-  
boards, Sectional Book-  
cases, Office Chairs  
Tables, etc.  
IMMENSE STOCKS.*

**RICHARDSONS**

72/74, LEEDS ROAD, BRADFORD

And THE HEADROW, LEEDS

Read

**The Yorkshire Observer**

your LOCAL morning paper

THE  
**COUNTY SCHOOL OF MOTORING**

DEVONSHIRE  
HOUSE,  
NORTH PARADE  
BRADFORD 1



FULLY  
QUALIFIED  
INSTRUCTORS  
(By examination)

MODERN DUAL-CONTROL CARS

Planned Courses  
Prospectus on application  
Instruction Centres Bradford and  
Keighley

'Phone 24753 Bradford



Direct from  
West-End Cabaret  
at the  
**CLUB PANAMA**  
Piccadilly Circus

London's Yorkshire  
Illusionist  
The Amazing  
**DIVAD**

Now available for  
DINNERS  
CABARET  
REVUE  
CONCERTS, etc.

43, PULLAN AVENUE, ECCLESHILL,  
BRADFORD, 2, Yorks. 'Phone Bfd. 38093