

PRINCE'S  
THEATRE  
BRADFORD

HARRY HANSON'S

FAMOUS.

Court Players

PROGRAMME

## GREENWOOD & CO.

14, HALL INGS, BRADFORD, 1  
Telephone : 27978

Why not call and see our large range of Fents, Suitings, Linings and Silks ?

Also Fitted Carpets and Squares  
Reasonable Prices (Estimates Free)



2 MARKET STREET  
BRADFORD

Furniture packed for Shipment  
(EXPERT SERVICE) Tel. 27070

BEFORE OR AFTER THE SHOW  
CALL AT THE

**MAJESTIC HOTEL**

½ minute walk from this Theatre

## WEBSTER'S FINE ALES

### Purity in what we Drink

Grape Fruit Crush, Orange Crush,  
Lemon Crush, Sparkling Lemonade,  
Sparkling Limes

Made from the Fresh Fruits

**F. M. RIMMINGTON & SON**  
LTD. Phone 26611

9-11, Bridge Street, Bradford

## T. S. EMPSON & CO.

Sales, Service, Supplies

For all the leading makes of  
**TYPEWRITERS**

Phone: Bradford 23060

**COAL AND COKE**

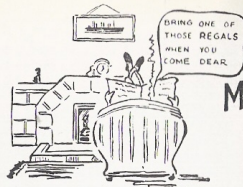
## HARGREAVES (West Riding)

LIMITED

Incorporating RHODES BROS. (Succrs.)

237 Manchester Rd., Bradford  
and L.N.E. Clayton Station

Phones: Bfd 27969. Qby. 783128



Melbourne  
Brewery  
Product

## PERMANENT BOOKINGS

*If you have liked the "COURT PLAYERS" and wish to have a seat booked every week, kindly give your name in to the booking office.*

*The same seat will then be reserved for you each week unless we hear from you to the contrary.*

*(Also ask about the "free seat" vouchers.)*

***The Manager  
and Staff are  
at your service***

*We wish to please you, but should you have any complaint, kindly report it to the manager.*

## PRINCE'S THEATRE BRADFORD

Managing Director : GWLADYS STANLEY LAIDLER, M B E  
Secretary : ROWLAND HILL  
Manager : FRANK MITCHELL

**MONDAY, NOVEMBER 26th and during the week**

Twice Nightly at 5.45 and 8.0 p.m.

HARRY HANSON

(For Perge Court Players Ltd.)

presents

## The Court Players

in

## "Dark is the Memory"

By Lennard Pearce

WEEK COMMENCING MONDAY, NOVEMBER 26th, 1956

# The Court Players

in

## “DARK IS THE MEMORY”

By Lennard Pearce

### Characters:

(in order of their appearance)

Thelma, a maid ..... MARY BROPHY  
 Dr. Simon Grey ..... BRIAN HEWITT-JONES  
 Moira West ..... ANN KENNEDY  
 Dr. Clive Waldron, M.R.C.S. .... MARTIN CARROLL  
 Tony Waldron, his son ..... AUSTIN STEELE  
 Jane Waldron, Tony's wife ..... JEAN KITSON  
 Vera Waldron, Clive's wife ..... SYLVIA MELVILLE  
 Detective Inspector Roberts ..... DOEL LUSCOMBE

### Synopsis of Scenes:

The action of the entire play takes place in Dr. Clive Waldron's home in Hampstead. The time is the present.

#### ACT ONE

A morning in August

Interval

#### ACT TWO

Scene 1. Evening—a few days later  
Scene 2. Sunday afternoon—three days later

Interval

#### ACT THREE

Scene 1. Saturday morning—a week later  
Scene 2. Evening—a week later

#### We are indebted to—

John Nash, 77, Westgate for Furniture. William Richardson, 72-74, Leeds Road for Desk. A. C. Sissing & Sons, 80, Westgate for Pictures. Filby's of John Street for Electrical Fittings. Barber's of Broadway for Leather Goods. Howarth and Buckley, Aldermanbury for Glassware. Strike's of North Parade for Flowers. Heppleston's of Rawson Square for China. Swears and Wells for Ladies' Furs. Dorothy Shaw of Ivegate for Ladies Hats.

Nylon Stockings by Kayser. Telephone by G.P.O. Olivier Cigarettes by Benson and Hedges

THE PLAY PRODUCED BY DOEL LUSCOMBE

The Settings designed and painted by CLARENCE RAYNER

Constructed by HARRY SPEED

Stage Director ..... RONALD ELMS  
 Stage Manager ..... DOREEN BOWER  
 (For Harry Hanson)

At the Piano: ARCHIE MOZLEY who will play:  
 Autumn Rhapsody : Schön Rosmarin (Kreisler)  
 Forgotten Dreams

The Management reserve the right to make any alteration in the cast which may be rendered necessary by illness or other cause.

NEXT WEEK: The Exciting Comedy Thriller

## “WANTED-ONE BODY”

By Raymond C. Dyer

Box Office open 9.30 a.m. to 8.0 p.m.

Telephone : 24788

**ABOUT NEXT WEEK'S PLAY**

"WANTED—ONE BODY" is one of those rare plays—a thriller with a good helping of comedy.

The action of the play takes place in the house of the late Mr. Barraclough who has just died at the age of ninety, and the story opens on the day of his funeral. The house is very isolated and the funeral arrangements are delayed owing to floods. From that moment the most mysterious happenings take place. Bodies and people disappear and secret panels open and close for no apparent reason. It is all very intriguing, and results in first class entertainment.

WEEK  
COMMENCING  
DECEMBER 10th

R. F.  
DELDERFIELD'S  
SUCCESSFUL  
COMEDY

**"Uncle's  
Little  
Lapse"**

WEEK  
COMMENCING  
DECEMBER 17th

**"The Way  
the Wind  
Blows"**

DEREK BENFIELD'S  
LAUGHTER-  
RAISING COMEDY



ANN KENNEDY

**Central Garage Ltd.**  
RANDALL WELL STREET

USED CAR SPECIALISTS

Ring Bradford 22271

**REFRESHMENT  
BARS**

*in the*

*Lounge, Dress Circle  
Stalls and Upper Circle*

**COFFEE AND ICES**

*obtainable from  
the Attendants*

**All the popular  
brands of CHOCOLATES**

*on sale in the  
foyer and bars*

YOUR  
RECEPTIONS  
PARTIES  
DINNERS  
DANCES  
WELL LOOKED AFTER  
AT

*Betty's Cafes*  
LTD.

DARLEY STREET,  
BRADFORD

BETTY'S CAFES LTD.  
Harrogate, Leeds, Bradford and York



Beer!

Tetley's

ON SALE  
AT THE

Bar

**BUTTERFIELD SIGNS  
LTD.**

Neon & General Sign Manufacturers

161-165, WESTGATE,  
BRADFORD

Phone : 2 2 2 6 8 (3 Lines)



Portrait by

*Bergson*  
STUDIO JORIK

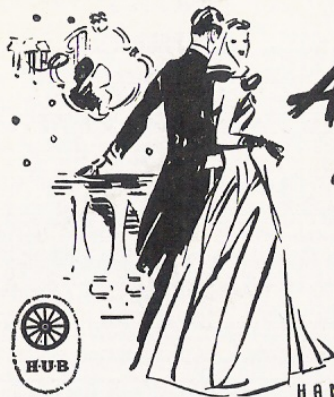
225  
Manningham Lane  
Phone Bfd. 29033  
Makers of  
Fine Portraits

**A. Atkinson & Son**

Sanitary Engineers, Plumbers,  
Glaziers, etc.

177, MANCHESTER ROAD  
BRADFORD

Telephone 24979



*A Pleasant Evening  
made more enjoyable -*

DRINK  
HAMMONDS

**Guards Ale**

and EXPORT Unity

ON SALE IN THE THEATRE BARS

HAMMONDS UNITED BREWERIES LIMITED

**CLIFFE CAFE**

38 KIRKGATE MARKET

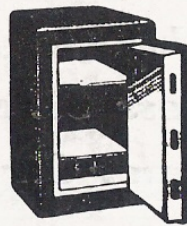
for

**BEST QUALITY FOOD**



LUNCHES 11.0 a.m. — 1.45 p.m.

TEAS 2.45 p.m. — 5.45 p.m.



**SAFES**

*New and Second Hand  
All Makes. All Sizes.  
Library & Office Desks.  
Filing Cabinets, Cup-  
boards. Sectional Book-  
cases. Office Chairs  
Tables, etc.  
IMMENSE STOCKS.*

**RICHARDSONS**

72/74, LEEDS ROAD, BRADFORD

And THE HEADROW, LEEDS

Read

**The Yorkshire Observer**

your LOCAL morning paper

THE  
**COUNTY SCHOOL OF MOTORING**

DEVONSHIRE  
HOUSE,  
NORTH PARADE  
BRADFORD 1



FULLY  
QUALIFIED  
INSTRUCTORS  
(By examination)

MODERN DUAL-CONTROL CARS

Planned Courses

Prospectus on application  
Instruction Centres Bradford and  
Keighley

'Phone 24753 Bradford



Direct from  
West-End Cabaret  
at the  
**CLUB PANAMA**  
Piccadilly Circus

London's Yorkshire  
Illusionist  
The Amazing  
**DIVAD**

Now available for  
DINNERS  
CABARET  
REVUE  
CONCERTS, etc.

43, PULLAN AVENUE, ECCLESHILL,  
BRADFORD, 2, Yorks. 'Phone Bfd. 38093