

THE

THE DUKE OF YORKS THE

DUKE OF YORK'S

THEATRE

PROGRAMME

PRICE SIXPENCE

Breath of suspicion

Food for the family, like Caesar's wife, must be above even a breath of suspicion. Meat, fish, milk, butter—all must be absolutely fresh. How fresh? As fresh as a breath of Spring; in fact . . .
POLAR FRESH FROM A GAS REFRIGERATOR

*See them at the gas showrooms, from about £30.
Fixing is free to adjacent point.*



NORTH THAMES GAS

THE
DUKE OF YORK'S THEATRE

ST. MARTIN'S LANE, LONDON, W.C.2

LICENSED BY THE LORD CHAMBERLAIN TO E. W. CROSSLEY TAYLOR

Managing Agents THEATRE MANAGERS, LTD.

MICHAEL CODRON

in association with

ALLAN DAVIS LTD.

presents

BREATH OF SPRING

by

PETER COKE

First performance at the Cambridge Theatre, 26th March, 1958

Transferred to the Duke of York's Theatre, 8th September, 1958

MICHAEL CODRON

in association with

ALLAN DAVIS LTD.

presents

BREATH OF SPRING

by

PETER COKE

Characters in order of appearance:

Miss Nanette Parry	HAZEL HUGHES
Brigadier Albert Rayne, C.B., C.M.G., M.V.O.	MICHAEL SHEPLEY
Lily Thompson	JOAN SIMS
Alice, Lady Miller	MARY MERRALL
Dame Beatrice Appleby, D.B.E.	ATHENE SEYLER
Miss Elizabeth Hatfield	HAZEL COPPEN
Pape	ANTONY BAIRD
Kemp	NEVILLE THOMPSON

Directed by **ALLAN DAVIS**

Designed by **OLIVER MESSEL**

**Scene: The living room of Dame Beatrice Appleby's flat,
overlooking the Albert Memorial.**

ACT I

An evening in Spring.

INTERVAL

ACT II

Six months later. Early afternoon.

INTERVAL

ACT III

Six months later. Afternoon.

Assistant to Oliver Messel: Carl Toms. Photographs by David Sim. Miss Seyler's dresses by Miss Ford Ltd. Miss Merrall's dresses and hats by Woodlands, Knightsbridge. Miss Hughes and Miss St. Clair dressed by Goringes of Victoria. St. Michael shirts and socks by Marks and Spencer. Wigs by Wig Creations Ltd. Nylon stockings by Kayser Bondar. Wardrobe care by Lux. Scenery built by Mara & Houghton and painted by Harkers Studios. Flowers and special properties by Hugh Skillen. "Breath of Spring" Mink by M. Prager. Other furs by Walter Kerner of Swears & Wells Ltd. Finger clock by Smiths Clocks and Watches Ltd. Furniture and properties by Bullens Ltd. Champagne by Yeuve Clicquot. Lighter and cigarette holder by Ronson. Spectacles by Negretti & Zambra. Olivier cigarettes by Benson & Hedges.

General Manager	For MICHAEL	RICHARD EASTHAM
Production Manager	CODRON LTD.	JACK HANSON

Company & Stage Manager	For	DAVID CHIVERS
Deputy Stage Manager	"BREATH	NEVILLE THOMPSON
Assistant Stage Manager	OF	FRANCES COHEN
Master Carpenter	"SPRING"	ERIC DUNNING
Wardrobe Mistress	COMPANY	ETHEL LUCAS
Press Representative			TORRINGTON DOUGLAS (GER 3159)

The Management reserve the right to refuse admission, also to make any alteration in the cast which may be rendered necessary by illness or other unavoidable causes.

Deputy Manager and Box Office Manager (for Duke of York's Theatre) H. A. Cole

SMOKING IS NOT PERMITTED IN THE AUDITORIUM

Box Office (Temple Bar 5122/3) open daily 10 a.m. to 8 p.m.

In accordance with the requirements of the Lord Chamberlain.—1.—The public may leave at the end of the performance by all exit doors and such doors must at that time be open. 2.—All gangways, passages and staircases must be kept entirely free from chairs or any other obstructions. 3.—Persons shall not in any circumstances be permitted to stand or sit in any of the gangways intersecting the seating, or to sit in any of the other gangways. If standing be permitted in the gangways at the sides and rear of the seating, it shall be strictly limited to the number indicated in the notices exhibited in those positions. 4.—The safety curtain must be lowered and raised in the presence of each audience.

In the interest of public health this theatre is disinfected throughout with Jeypine Germicide and Disinfectant



Patsy says...
Huntley & Palmers
 CAKE
... served in this Theatre

if you cannot read this without
 opera glasses you need a Jenner's
 Golden Ale. Even if you can
 manage to read it you'd still be
 wise to have a Jenner's at the
 interval. Just ask at the bar



Just say
BOOTH'S
 THE FINEST DRY GIN

SCAMPI · OYSTERS · SALMON
GARNERS
 RESTAURANT
 FAMOUS FOR
London's Finest
SEAFOODS
 AND
STEAKS
 27 WARDON ST.
 LEICESTER SQ., W.1. GER. 1287.



DOVER SOLES · TROUT · HALIBUT

ROYAL COMMONWEALTH SOCIETY FOR THE BLIND
 Patron: Her Majesty the Queen
 President: The Right Hon. The Earl of Halifax.

A million people in the British Empire are blind. Millions more suffer from painful, incapacitating eye disease. Three-quarters of this is preventable.

The Royal Commonwealth Society for the Blind was formed in 1950 to combat this scourge. Its scientists, conducting hazardous research in lonely and remote areas, are successfully tackling the main causes of blindness.

This is one of the many activities of the Royal Commonwealth Society for the Blind in its effort to bring new hope to blind people in British lands from the West Indies, around the world to the Pacific. In the eight years of its existence, blind welfare organisations have been established in 28 territories, 32 new schools and training centres for the blind have been founded, scores of teachers and welfare workers have been trained. The number of children in schools has doubled; the number of blind adults in training has multiplied tenfold.

This essential work must not fail through lack of funds. For every £1 raised in this country, £2 is raised overseas. We appeal for support to everyone concerned with the well-being of the Colonies whose mind rebels against needless suffering and whose heart can respond to the challenge of a great cause.

Donations should be sent to:
THE ROYAL COMMONWEALTH SOCIETY FOR THE BLIND
 121 Victoria Street, London, S.W.1

DUKE OF YORK'S THEATRE
 (Licensed by the Lord Chamberlain to E. W. Crossley Taylor)

Refreshment of the Best Quality can be obtained in the Saloon Lounges in the Foyer and the back of the Stalls.

The Management call the attention of Patrons to the special service of Afternoon Teas which are served by attendants in the auditorium.

The Bars are under direct control of the Management.

ASK FOR
LIGHT TOLLY ALE
 AT THE BARS

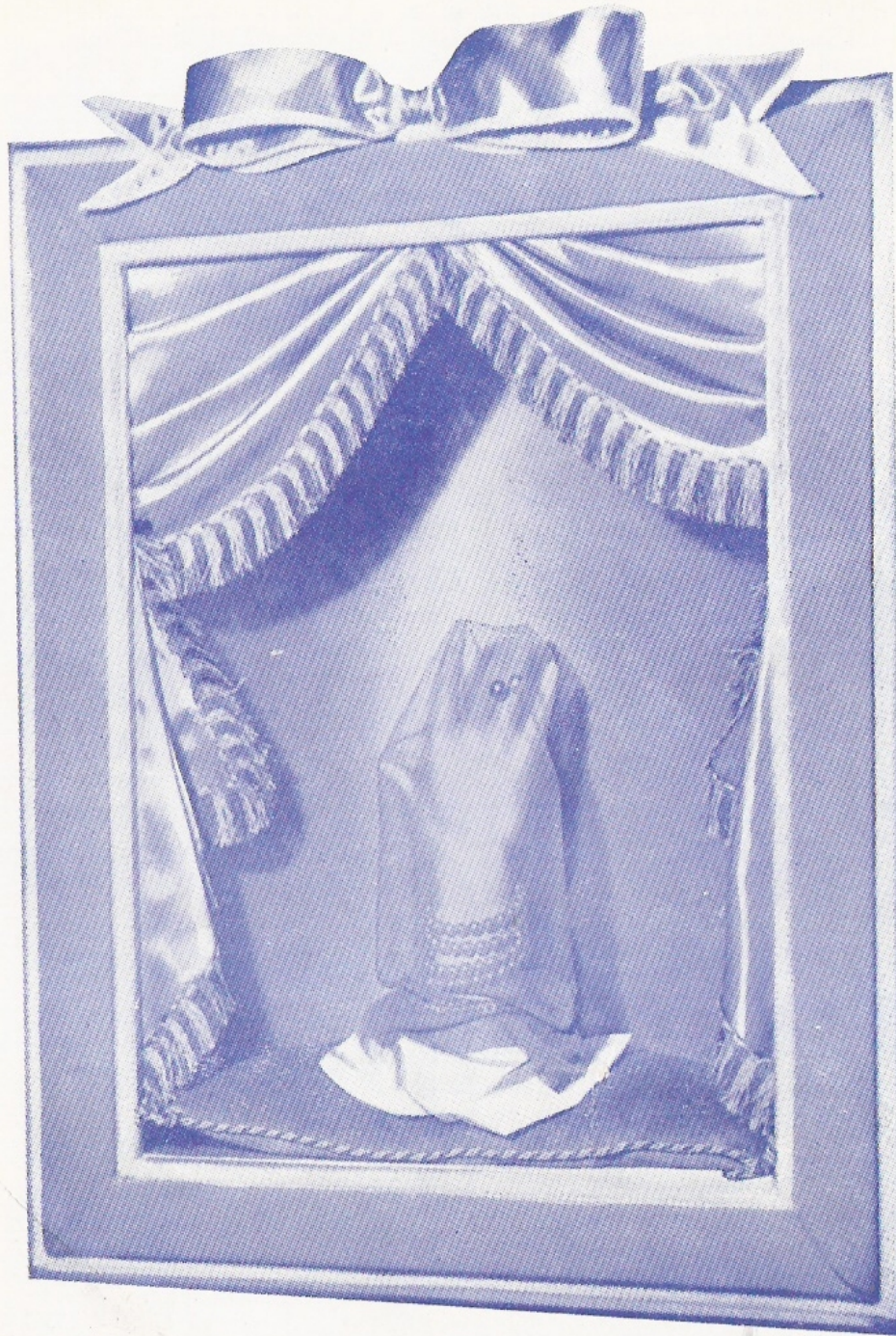
ASK FOR
Gordon's
 AT THE BARS

WHITEWAY'S
 CYDERS
 SOLD AT THE BARS OF THIS THEATRE
"SANATOGEN"
 (REGISTERED TRADE MARK)
 TONIC WINE

Meet
 Mr Brandyman
 -at the bars



Make friends with
MARTELL



Christian Dior

Stockings *at all leading stores*