

CAMBRIDGE THEATRE

Under the direction of Tom Arnold and Emile Littler



THE CROOKED MILE

A NEW MUSICAL

Book and Lyrics by

PETER WILDEBLOOD

Music by

PETER GREENWELL

PROGRAMME
ONE SHILLING



ELISABETH WELCH

is too well known for biographical notes to be necessary but she is so accepted as an ornament of the British Stage that many do not know that she was, in fact, born in New York. Her previous triumphs in London are too many to recount but for the last four years she has been dividing her time between Cabaret, Television and Radio and her return to the West-End Stage in "The Crooked Mile" will be welcomed by her many admirers.

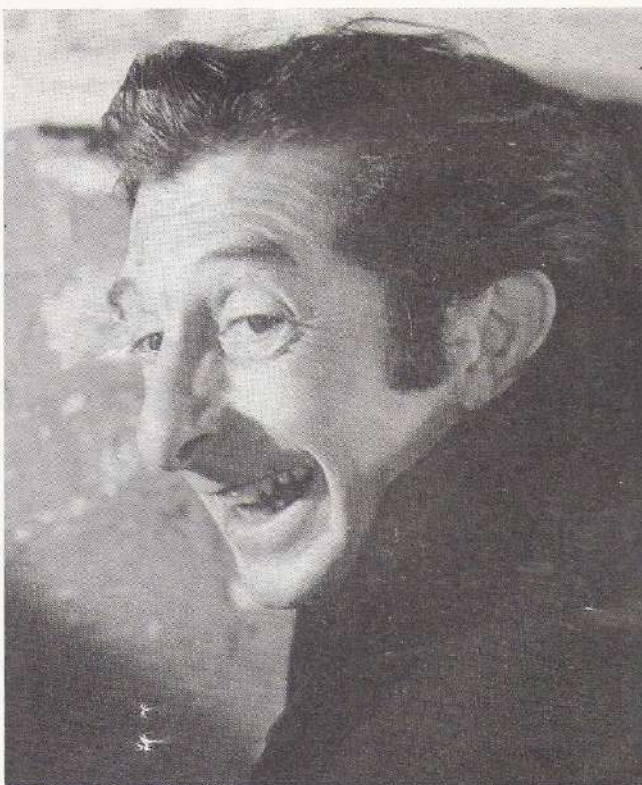
ELWYN BROOK-JONES

is very well known to London theatre-goers and to a wider public through his many appearances in films and on television. The part of a spine-chilling gangster is no novelty for him but this is his first singing role.



JACK MacGOWRAN

like so many fine actors, is a product of the Abbey Theatre, Dublin. He came to London comparatively recently but made an immediate impact and his performances in "The Shadow of a Gunman" with his own Company at the Lyric Theatre (Hammersmith) and in "The Iceman Cometh" and "The Rough and Ready Lot" will be long remembered by those who saw them. Although "The Crooked Mile" is the first musical in which he has performed in London, he made an outstanding success in the musical version of "Juno and the Paycock" on Broadway.



MILLICENT MARTIN

played her first noteworthy part when she went to America for the Broadway production of "The Boy Friend" in which, during the course of two years, she played every important part within her considerable range. She returned to London to take over the parts of 'Fay' and 'Lolita' in "The Boy Friend" at Wyndham's and was almost immediately placed under contract by Associated British Picture Corporation Ltd. She left "The Boy Friend" to play, with great success, a leading part in "Expresso Bongo."



AGENTS FOR
 FIAT, GOGGO, ISETTA,
 HEINKEL, MESSERSCHMIDT,
 BOND, RELIANT, BERKELEY,
 SCOOTERCAR, A.C., CORONET

PARKING PROBLEM SOLVED!

If you find parking a problem, and who doesn't, here is the answer! There is always room for a miniature car, and the best and smartest come from M.P.H.W. Do come and see us—there's a branch near you.

23 PICCADILLY, LONDON, W.1
 OPP. SIMPSONS GERRARD 6055

242 BROMPTON RD. LONDON, S.W.3
 BY ORATORY KNIGHTSBRIDGE 8711

186 HOLLAND PARK AVENUE
 LONDON W.11 PARK 2410

SURREY. 56 GOLDSWORTH ROAD
 WOKING WOKING 5231



LONDON'S MINIATURE CAR SPECIALISTS



BENNY HILL SHANI WALLIS

AND

ROBERTSON HARE

ARE IN

"FINE FETTLER"

AT THE PALACE THEATRE

"LAUGHS
 APLENTY"
 —News of the World

"FRESH, ZEALOUS,
 SPICK AND SPAN"
 —News Chronicle

CAMBRIDGE THEATRE
CAMBRIDGE CIRCUS - - - W.C.2.

Proprietors Arnlit, Ltd.

Licensed by the Lord Chamberlain to and under the direction of
TOM ARNOLD and EMILE LITTLER

DON GEMMELL and REGINALD WOOLLEY

for Players Ventures Ltd.

in association with Michael Balcon Enterprises

present

ELISABETH WELCH and **JACK MacGOWRAN**

in

THE CROOKED MILE

a new musical

Book and Lyrics by
PETER WILDEBLOOD

Music by
PETER GREENWELL

with

ELWYN BROOK-JONES

MILLICENT MARTIN

Under the direction of

JEAN MEYER

Designed
by
REGINALD WOOLLEY

Orchestra under the
direction of
KENNETH ALWYN

Dance Arrangements
by
JOHN HEAWOOD

Orchestration by **GORDON LANGFORD**

First Performance at this Theatre : Thursday, 10th September, 1959

MONDAY to FRIDAY EVENINGS at 8.0

Matinee : THURSDAY at 2.45.

SATURDAY at 5.0 and 8.15

THE CROO

Characters in order of appearance :

Fingers	ANTON RODGERS
Nick	MARK ANTHONY
Battersea Bob	THOMAS KYFFIN
Slim	LEWIS HENRY
Windy Sid	BOBBY SCOTT
Knack	REX ROBINSON
Jacko	ALAN JONES
Lightning	GEORGE WEBB
Smudge	BILL GIDLEY
Paddywhack	NORMAN WARWICK
The Bishop	EDGAR K. BRUCE
Squeezy	JOHN BARRARD
Jug Ears	JACK MacGOWRAN
Sweet Ginger	ELISABETH WELCH
Glendower	ROGER AVON
Cora	MILLICENT MARTIN
Mortiss Garrity	JOHN LARSEN
Delicious Daisy	CHRISTINE CHILD
Aida	ISABELLE LUCAS
Creeping Jenny	PAT ASHTON
Busy Lizzie	JACQUELINE MURRAY
Black Eye'd Susan	RENEE FELLOWS
Rambling Rose	LITA TOVEY
Welsh Poppy	PATRICIA HALL
Indoor Ivy	JEAN RAYNER
Fishmonger	ALAN JONES
Butcher	LEWIS HENRY
Blind Man	REX ROBINSON
Chinese Waiter	BILL GIDLEY
Sandwich Man	MICHAEL ASHLIN
Policewoman	SONIA PETERS
Lotus Blossom	SHEILA CHESTER
Espresso Girl	ANNE BRILEY
Belgian Annie	PEGGY ROWAN
Passers-by	GEORGE LUCAS, RON LUCAS
Old Woman	MARIE FIDOCK
The Carver	ELWYN BROOK-JONES
Razor	BOB COLE
Splosh } Carver's Men {	NORMAN WARWICK
Bonker }	RUDI SZIGETI
Weed	JOHN HEAWOOD
Weed's Girl	FRANCES PIDGEON
Barrow Boys	NORMAN WARWICK, LEWIS HENRY, BILL GIDLEY
Policeman	THOMAS KYFFIN
Father	BOBBY SCOTT
Mother	PATRICIA HALL
Child	SHEILA CHESTER

K E D M I L E

Workmen	...	NORMAN WARWICK, RUDI SZIGETI, MICHAEL ASHLIN
Passers-by	...	LITA TOVEY, ALAN JONES
Sailors	...	BOB COLE, RON LUCAS
Flip		MICHAEL ASHLIN
Dumdum	} Carver's Men }	RON LUCAS
Deedee		GEORGE LUCAS
Police Sergeant	...	ALAN JONES
Policeman	...	LEWIS HENRY
Debutante	...	JACQUELINE MURRAY
Detective	...	MICHAEL ASHLIN
Barrow Boys	...	BOB COLE, ALAN JONES
Luigi	...	ALAN THOMAS

Millicent Martin appears by arrangement with Associated British Picture Corporation Ltd.

The action of the Play takes place in Soho on the week-end of 16th August, 1959

ACT I.

Scenes :

1. Sweet Ginger's Ironmongery.
2. The Street Outside.
3. The Carver's Office at the Scissors Club.
4. A Street.
5. The Ironmongery.
6. A Street Market.

INTERVAL.

ACT II.

Scenes :

1. Sweet Ginger's Flat.
 2. A Street.
 3. A Corridor at the Magistrate's Court.
 4. Another Street.
 5. The Ironmongery.
 6. Finale.
-

THE CROOKED MILE

MUSICAL NUMBERS

ACT I.

"Requiem for Joe"	Jug Ears and Gang
"Someone Else's Baby"	Sweet Ginger, Jug Ears and Gang
"Lollyby"	Sweet Ginger, Jug Ears and Gang
"Going Up"	Mortiss
"If I Ever Fall in Love Again"	Sweet Ginger
"Buy a Ticket"	The Company
"Horticulture"	Cora
"The Crooked Mile"	The Carver, Weed and Weed's Girl
"Cousin Country"	Sweet Ginger and Mortiss
"If I Ever Fall in Love Again (Reprise)"	Sweet Ginger
"Free"	Jug Ears
"Street Scene"	The Company
"Meet the Family"	Cora and Sweet Ginger
"Spare a Penny"	Jug Ears and Company

ACT II.

"The War on Saturday Night"	The Gang
"I'll Wait"	Sweet Ginger
"The Simple Life"	Weed's Girl and Girls
"Monday Morning March"	Girls
"Other People's Sins"	Cora and Girls
"Strike!"	Cora and Ensemble
"Free" (Reprise)	Sweet Ginger
"Down to Earth"	Mortiss
"Luigi"	Ensemble
"Finale"	The Company

Orchestration, and Ballet Music arranged, by GORDON LANGFORD

Vocal Arrangements by the Composer

Orchestra (Leader : Anthony English) under the Direction of
KENNETH ALWYN

Scenery built by Brunskill and Loveday ; painted by Alick Johnstone.
 Costumes by Nathans.
 Nylon stockings and tights by Bear Brand. Ladies shoes by Dolcis.
 Miss Welch's Wig by Wig Creations. All other wigs by Nathanwigs.
 Weapons by Bapty and Company. Cigarettes by Olivier. Lighters by Ronson.
 Sound effects by R. G. Jones of Morden.
 Electrical equipment by Strand Electric and Engineering Co. Ltd.
 Cash register kindly lent by National Cash Register Co. Ltd.
 Miniature car lent by M.P.H.W. Sales Ltd., 23, Piccadilly, W.1.
 Ironmongery by The House of Toomer, Newbury. Stalls on hire from J. & J. Tappy, Lambeth Walk.
 Perfume kindly supplied by Lancôme (England) Ltd. Music Published by Edward Kassner Music Co. Ltd.

Photographs by Angus McBean

For PLAYERS VENTURES LTD.		
General Manager	...	HAL D. STEWART
Stage Manager	...	KENNETH FRASER
Deputy Stage Manager	...	JOHN WAYNE
Assistant Stage Manager	...	MICHAEL JACKSON
Costume Supervisor	...	DINAH GREET
Assistant to the Designer	...	REGINALD HANSON
Wardrobe Mistress	...	LYDIA YOUNG
Press Representative	...	TORRINGTON DOUGLAS (GER 3159)
Manager		For CAMBRIDGE THEATRE
Box Office (J. F. Ball)	...	JOHN MYTTON
Public Relations	...	TEMPLE BAR 6056
		PATRICK SELBY

Ornamental Light Fittings in the Theatre Foyer by Dernier & Hamlyn Ltd.

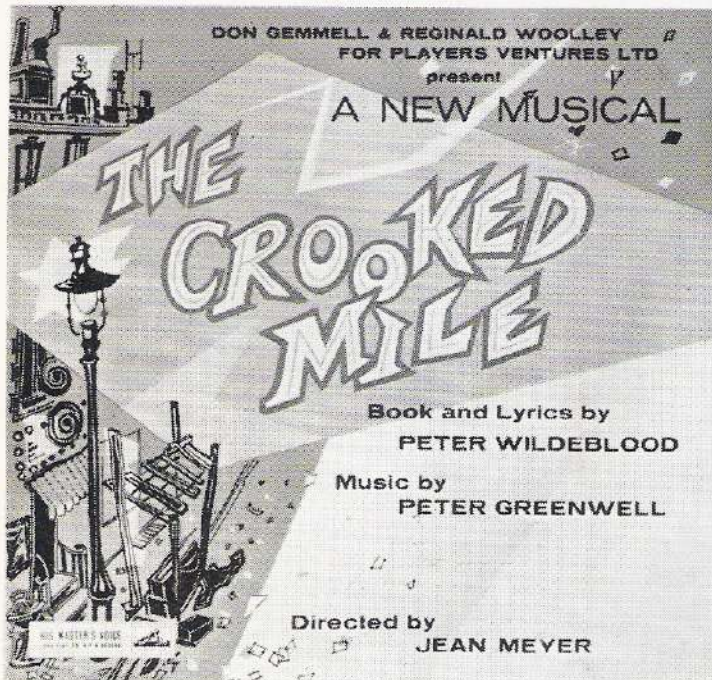
Ornamental Glass and Mirrors by Clarke & Co. (Hoxton) Ltd.

Patrons are reminded that the taking of photographs during the performance is not allowed.

The Management reserves the right to refuse admission, also to make any alteration in the cast or the programme which may be rendered necessary by illness or other unforeseen causes.

PLEASE DO NOT SMOKE IN THE AUDITORIUM

In accordance with the requirements of the Lord Chamberlain :— (1) The public may leave at the end of the performance by all exit doors and such doors must at that time be open. (2) All gangways, passages and staircases must be kept entirely free from chairs or any other obstructions. (3) Persons shall not in any circumstances be permitted to stand or sit in any of the gangways intersecting the seating or to sit in any of the other gangways. If standing be permitted in the gangways at the sides and rear of the seating it shall be strictly limited to the number indicated in the notices exhibited in those positions. (4) The safety curtain must be lowered and raised in the presence of each audience.



DON GEMMELL & REGINALD WOOLLEY
 FOR PLAYERS VENTURES LTD
 present
 A NEW MUSICAL
THE CROOKED MILE
 Book and Lyrics by
 PETER WILDEBLOOD
 Music by
 PETER GREENWELL
 Directed by
 JEAN MEYER

THE ORIGINAL CAST LP RECORD

starring

ELISABETH WELCH
JACK MACGOWRAN
MILLICENT MARTIN
ELWYN BROOK-JONES

with

John Larsen and Alan Thomas

*

Prologue; Overture; Lolly-Bye;
 Going up; If I ever fall in love again;
 Horticulture; Cousin country; Free;
 Street Scene; Meet the family;
 Spare a penny; I'll wait;
 Other people's sins; The Strike;
 Down to earth; Luigi; Finale



HIS MASTER'S VOICE
 REGD TRADE MARK BY
 THE GRAMOPHONE CO. LTD

HIS MASTER'S VOICE CLP1298

E.M.I. RECORDS LTD., 8-11 GREAT CASTLE STREET, LONDON W.1



A SCENE FROM THE SHOW

THE CROOKED MILE

Costumes & Wigs
by

NATHAN'S

EST. 1790.

HONG KONG EMPORIUM

Here

*you can obtain Oriental foods,
delicacies, chinaware, fancy
goods, silks, umbrellas, lanterns
and decorative articles.*

53 RUPERT STREET, W.1

Telephone : GER 8272

*Near Globe Theatre,
Shaftesbury Avenue. W.1*



*George ! George ! please
ring up ... GERrard 6847
... for a table. I want
everything Chinese tonight."*

HONG KONG RESTAURANT

58-60 Shaftesbury Avenue, W.1

*Fully Licensed
Open 12 noon-12 midnight (weekdays)
11 p.m. (Sundays)*



THE SUCCESS OF THE CENTURY

Bookings at all Gas Showrooms

NORTH THAMES GAS