



**WATFORD
CIVIC
THEATRE
TRUST
LIMITED**

**Palace
Theatre
Watford**

Jackson

THE JEWELLER FOR QUALITY

22/24 High Street (opp. Sainsbury's) Watford

Telephone : WATFORD 21342 & 32449

THE SMALL SHOP WITH THE LARGE REPUTATION



14 HIGH STREET WATFORD WATFORD 22371
WATFORD'S BRIGHTEST DEPARTMENT STORE

OVER 100 DEPARTMENTS

SPACIOUS CAFETERIA

LATE NIGHT SHOPPING
EVERY FRIDAY

MUSIC LOVERS Visit Our Lower Ground Floor Record
Department,

READ ABOUT IT
IN YOUR LOCAL
NEWSPAPER

THE WATFORD WEST^{and}HERTS POST

EVERY THURSDAY

THE PALACE THEATRE

(Watford 25671)

Proprietors : The Watford Theatre Company

Licenses : Watford Civic Theatre Trust Ltd.

Council of Management :

Chairman : Ald., E. C. Amey

Secretary : Gordon H. Hall, LL.B.

Aldermen : A. G. Dillingham, J.P., H. W. C. Lodder, J.P. and
N. Tyrwhitt, B.Sc.

Councillors : R. J. Gatton, Mrs. H. Dodd, R. S. Horner,
J. S. Oliver, P. A. Wilson

Michael Codron, Pieter Rogers and Dr. C. M. H. Rotman.

General Manager and Licensee : Giles Havergal

Theatre Manager : Peter M. Elrington

Publicity Manager : Maggie Crossley

The Watford Civic Theatre Trust Ltd. gratefully acknowledges
financial assistance from the ARTS COUNCIL OF GREAT
BRITAIN.

Member of the Council of Repertory Theatres.

Tuesday 8th November - Saturday 19th November

THE WATFORD CIVIC THEATRE TRUST LIMITED

presents

THE WORLD PREMIERE of

LIBBY MORRIS in

AS DOROTHY PARKER ONCE SAID...

Devised by Leslie Lawton from the works of Dorothy Parker

Music by SANDY WILSON

also starring ARABY LOCKHART

with RAY LONNEN MARINA MARTIN LESLIE LAWTON

Musical direction by CHUCK MALLETT

Lighting by JOHN BAKER

Designed by ANDREW and MARGARET BROWNFOOT

Musical numbers staged by JOHN HEAWOOD

Directed by BEN HAWTHORNE

at 7.45 p.m.

Saturday Matinee 4.45 p.m.

BONANZA

THE STEAK RESTAURANT

in the Western Manner
(2 MINUTES FROM THEATRE)

MAIN DISHES

3/6
to
15/-

LICENSED

Open to 11.0 p.m.
(Fridays, Saturdays
to Midnight)

20 HIGH STREET
Telephone : 23674

Travel in comfort with Economy
Radio-Controlled

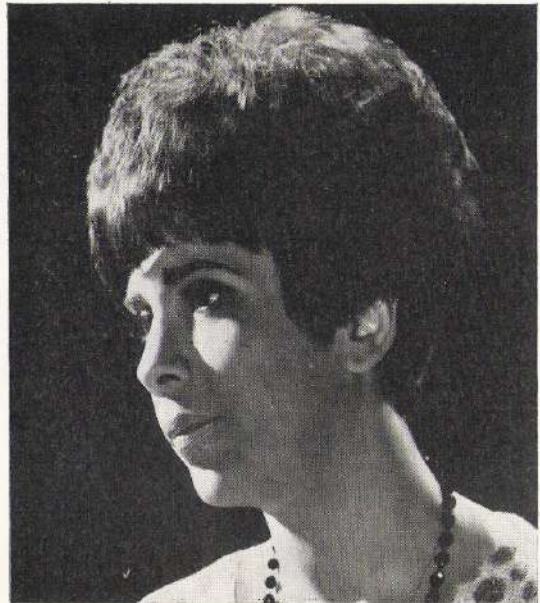
TAXIS AND PRIVATE CAR HIRE

Watford 22121 Garston 3000

•
Reduced rates for parties and long distance trips
Please ask for a quotation

ECONOMIES LTD.

•
293b/293c HIGH STREET
WATFORD, HERTS.



LIBBY MORRIS

Born in Winnipeg, Canada, Libby Morris attended the University of Manitoba, where she studied classical singing. She began her career as a straight singer but soon changed to comedy. In Canada she had her own radio show and was a popular cabaret star before coming to England in 1956. She had her own series on Granada television, "TWO'S COMPANY" with Jack Jackson and her many other television appearances include "THE PALLADIUM SHOW", "PLAY OF THE WEEK", "HIPPODROME", "ON THE BRADEN BEAT" and "DON'T SAY A WORD". She was in the film "TIARA TAHITI" with James Mason and John Mills and has just completed "TWO FOR THE ROAD" with Albert Finney and Audrey Hepburn. In London she was seen in a smash-hit season at 'The Establishment'; she played the mother in "COME BLOW YOUR HORN" at the Prince of Wales Theatre for eighteen months, and received some of the greatest reviews ever afforded a performer for her contributions to the revue "AD-LIB" at the Fortune Theatre. In New York Libby is well-known for her numerous television appearances in "THE JOHNNY CARSON SHOW" and for her cabaret performances. Her popular number "ONE OF THOSE SONGS" was released here as a single record and her first L.P. album "AD-LIBBY", recorded recently in New York, is now available on both sides of the Atlantic. She is married to actor Murray Kash and they have a seven year old daughter.

For GOOD FOOD . PROPERLY COOKED
NICELY SERVED in IDEAL SURROUNDINGS



visit the
Brass Lantern

26a HIGH STREET (30 sec. from this
Theatre) Morning Coffees, Luncheons,
Afternoon Teas and Grills : Theatre
Parties : Weddings : Business Functions,
etc.

For
WEDDING & BOUQUETS

FLORAL TRIBUTES
for all occasions

HOUSE PLANTS

BEDDING PLANTS, etc.

BULBS

POND PLANTS

and all Floral accessories

AQUA - FLORA

(Under the personal direction of
Charles W. Godman)

55 ST. ALBANS ROAD
(TOWN HALL END)

Telephone :
WATFORD 25252

YOUR ENTIRE INTERESTS IN
ENTERTAINMENT : SPORT : NEWS
AND ADVERTISEMENTS ALWAYS
FULLY COVERED IN THE

WEST HERTS AND

**WATFORD
OBSERVER**

PUBLISHED FRIDAYS

PRICE FIVEPENCE

YOUR BABY DESERVES THE BEST . . .

For the finest selection of

PRAMS, NURSERY FURNITURE, BLANKETS, etc.

and repairs and spares for ALL LEADING MAKES, go to

J. & A. SEAL

37 Market Street, . Watford . Phone 23015



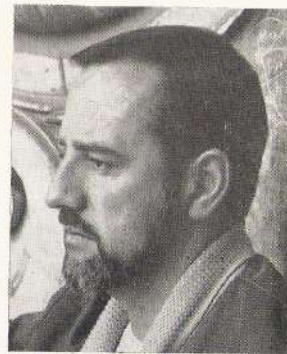
LESLIE LAWTON

Born in Scotland, LESLIE LAWTON made his first television appearance at the age of 14 and appeared in cabaret while he was still at school! He worked for a time as an advertising copywriter before gaining valuable experience in repertory seasons at Liverpool, York and Worthing. Films include "BILLY LIAR" and "RUN WITH THE WIND". Recent television includes leading parts in "REDCAP", "ARMCHAIR THEATRE", "PARDON THE EXPRESSION" and in "CORONATION STREET" he appears as Clive Owen, the local reporter. He is married to actress Jenny Oulton and they have a daughter.

It has long been his ambition to bring the works of Dorothy PARKER to the stage. He first had the idea for "AS DOROTHY PARKER ONCE SAID . . ." several years ago and has been working on the script ever since.

SANDY WILSON

Born in Sale, Cheshire, SANDY WILSON went to Harrow and, after Army service, to Oxford, where he started writing revue material, some of which has been seen in the West End, performed by Hermione Gingold and other well known artistes. He studied at the Old Vic school, then wrote revue material for club theatres. In 1953 he was asked by the Players Theatre to write a 1920's scene for a three weeks run. This became "THE BOY FRIEND", which subsequently ran for five years in London and four years in New York. Since then he has written "THE BUCCANEER", "VALMOUTH", and "DIVORCE ME, DARLING", which is to be produced on Broadway next year. He has also written two books, "THIS IS SYLVIA" and "THE POODLE FROM ROME". His next project is a musical about Amy Johnson.



AS DOROTHY PARKER ONCE SAID . . .

PROGRAMME

(running order subject to alteration)

ACT ONE

1. "PARKER'S LAW" THE COMPANY
2. "PERFECTLY FINE"
Peter LESLIE LAWTON
Janet MARINA MARTIN
3. "FOR A FAVOURITE GRANDDAUGHTER"
ARABY LOCKHART
4. "JUST A LITTLE ONE"
Fred RAY LONNEN
Evie LIBBY MORRIS
5. "BALLADE AT THIRTY FIVE"
MARINA MARTIN with RAY LONNEN, LESLIE LAWTON
6. "ARRANGEMENT IN BLACK AND WHITE"
Guest ARABY LOCKHART
Host LESLIE LAWTON
Walter RAY LONNEN
7. "THE CHOICE" LIBBY MORRIS
8. "THE MANTLE OF WHISTLER"
Alice MARINA MARTIN
Jack LESLIE LAWTON
Hostess ARABY LOCKHART
9. "ONE PERFECT ROSE" LIBBY MORRIS
10. "GLORY IN THE DAYTIME"
Mrs. Murdock MARINA MARTIN
Jim Murdock RAY LONNEN
Hallie Noyes ARABY LOCKHART
Lily Wynton LIBBY MORRIS
11. "VARIATIONS ON A THEME"
(a) "Now at Liberty" LIBBY MORRIS
(b) "Love Song" ARABY LOCKHART,
MARINA MARTIN
(c) "Symptom Recital" THE COMPANY

ACT TWO

12. "CHANT FOR DARK HOURS" THE COMPANY
13. "DIARY OF A NEW YORK LADY" ... LIBBY MORRIS
14. "DUSK BEFORE FIREWORKS"
Kit MARINA MARTIN
Hobie RAY LONNEN
15. "ULTIMATUM" MARINA MARTIN
16. "SONG OF ONE OF THE GIRLS" LIBBY MORRIS
17. "THE WONDERFUL OLD GENTLEMAN"
Allie LIBBY MORRIS
Lewis RAY LONNEN
Hattie ARABY LOCKHART
Miss Chester MARINA MARTIN
18. "WAR SONG" LIBBY MORRIS
19. "LADY WITH A LAMP"
Mona MARINA MARTIN
Myrtle ARABY LOCKHART
20. "RESUME" LESLIE LAWTON
21. "THE WALTZ" LIBBY MORRIS
22. FINALE

The entire action takes place in the city of New York in the year 1930.

There will be ONE INTERVAL of fifteen minutes.

The musicians :

CHUCK MALLET : Pianist and Musical Director

GEOFF SOTHCOTT : Bass

DON LAWSON : Drums

"AS DOROTHY PARKER ONCE SAID . . ." is presented by arrangement with The Viking Press Ltd., New York.



ARABY LOCKHART was born in Canada. On graduation from the University of Toronto she played in New York, Bermuda, Ottawa and at Stratford, Ontario, and appeared on television and in films. She formed her own company in Toronto and did a series of revues called "CLAP HANDS". In 1963 she brought "CLAP HANDS" to the Lyric, Hammersmith, where it had a great success and subsequently opened the Prince Charles Theatre with it. She has since been seen frequently on television in this country. She is married and has five children.

RAY LONNEN was born in Bournemouth, where he worked as a clerk, waiter, barman, stenographer and 'rag-and-bone' man to help pay his drama school fees. He gained wide experience in repertory theatres throughout the country and was a leading member of the Watford Civic Theatre Company from its opening in March, 1965. Recently he has been at the Belgrade Theatre, Coventry and has been seen many times on television in plays and series. He has twice played leading roles in A.T.V.'s "LOVE STORY" series and shortly will be seen in the "MRS. THURSDAY" series.



Born in London, **MARINA MARTIN** began her training at the Central School of Drama when she was only sixteen and first appeared as a juvenile at York. She worked in repertory as a leading lady at Perth, Farnham and Birmingham and toured the Hebrides for the Arts Council in "THE RIVALS". In the West End she has been seen in "BEWARE OF ANGELS" and "AUNT EDWINA". She has made many television appearances, (usually as 'the Other Woman' or 'the Dumb Blonde!') and was in the film "MORGAN—A SUITABLE CASE FOR TREATMENT".

WATFORD CIVIC THEATRE TRUST LIMITED PALACE THEATRE

General Manager and Director of Productions	GILES HAVERGAL
Theatre Manager	PETER M. ELRINGTON
Assistant Manager	JAY HILLAN
Technical Director	JOHN CLARKE
Stage Manager	IAN RIBBENS
Deputy Stage Manager	SALLY CROCKER
Assistant Stage Managers	SUSAN WHITE
	PETER WINTER
Press Officer	TED GRIFFIN
Secretary	KATHY WILSON
Stage Carpenter	ARTHUR KING
Electrician	JOHN BAKER
Trainee Technician	PAUL HEPWORTH
Resident Designer	PHILIP PROWSE
Resident Assistant Designer	JOHN PHILLIPS
Student Designer	ELROY ASHMORE
Student Stage Manager	MAUREEN McNULTY
Box Office (Watford 25671)	MRS. POOL
	MISS ELLIS

Open from 10 a.m. to 7.45 p.m.

Assistant to the Director of
Productions

(Arts Council Award)

ANTONY FERRAND

Publicity Manager : MAGGIE CROSSLEY

We are grateful to the following for the loan of properties

Photographers Greville of Watford

Sound Equipment used in the Theatre supplied by Courtenay Davis
Ltd., (Sound Engineers) 12, Station Road, Harpenden.

The electric sewing machine
used in the wardrobe by
courtesy of Singer Sewing
Machines Ltd.

The Hawkins Electric Hi-Dri
Dryer-Airer by L. G. Hawkins
& Co. Ltd.

Costumes executed by John Phillips

'Plays Ahead' designs in foyer by Dido Adamson, Posters by Trend
Publicity Ltd.

The Dress form used in the wardrobe by courtesy of Gerda Thomson.
Make up by Max Factor. Telephone equipment by the G.P.O.
Lighters by Ronson. Stockings by Kayser-Bondor Ltd. Advertising Agents
The National Advertising Corporation Ltd. Floral Decor in Foyer by Quality
Gardens Ltd., Bushey, Clements Ltd. "Matchmate" High St., Watford.

Gade House, Bygones Antiques. The Turntable, Woolworth,
Watford Peace Memorial Hospital, Latimer Glass Work, Coughlan Glass.

WATFORD PALACE THEATRE PATRONS' CLUB

The Club exists to promote interest in the attendance at the
Palace Theatre, and to establish a bond between the artists and
the public.

The Patrons' Club extends a cordial welcome to anyone
interested in the theatre to join the Club and you are invited
to complete the form on our brochure (obtainable in the
Foyer) and send with your subscription to the Secretary,
Watford Palace Theatre Patrons' Club, Palace Theatre,
Watford.

DOROTHY PARKER

Dorothy Parker was born Dorothy Rothschild in New Jersey in 1893 and was educated partly in a convent school. In 1916 she worked for a time on "Vogue" magazine. She became famous for her work as Drama Critic on "Vanity Fair". Her criticisms were notoriously frank and she was eventually fired for this very reason. She said of one actress's performance: "She ran the gamut of emotions, from A to B!"

Her first collection of verse appeared in 1927 and in the same year she became book reviewer for "The New Yorker". Collections of her short stories were on the best seller lists for years, and in 1929 she won the O'Henry Prize for one of her stories.

There was a time when anything bright or audacious said in New York was ascribed to Dorothy Parker, but she has always hated her reputation as a "wisecracker". She is really a serious writer and although she has made many millions of people laugh at her verses and delightful stories, there is an underlying sadness, almost bitterness, in everything she writes. This reflects, in many ways, her own life, which has, at times, been an unhappy one. Franklin P. Adams said once of her work: "Nobody can write such ironic things unless he has a deep sense of injustice,—injustice to those members of the race who are victims of the stupid, the pretentious and the hypocritical."

Two International Cabaret Artists

STEVE BENBOW
TOMMY EYBLE



Mamma Mia Restaurant
Watford

APPEAR NIGHTLY AT

Mamma Mia Restaurant

76 HIGH ST., WATFORD
(Opp. Cawdells)

- ★ Wine and dine by candlelight
- ★ An evening out to remember
- ★ 3 course dinner from 21/-

Table reservations:
WATFORD 43355

UNIVERSAL STATIONERS

carry a comprehensive range of Books, Stationery,
Cards, and Artist's and Drawing Office supplies.

Typewriters and Office Machinery
"Sales and Service"

42 High Street, Watford

Tele.: Watford 27231/2



What a
performance

... by Schweppes
in the theatre bar!

HAMMONDS of WATFORD

SUPPLIERS OF GOOD PHOTOGRAPHIC EQUIPMENT
TO ALL DISCERNING PEOPLE

opp. this theatre 5 Clarendon Corner Watford 27898
47 Queens Rd., Watford 36136 - 27187 (Head Office)

See Our Latest Venture :
HAMMOND MUSICAL STUDIO
63 Queens Rd., Watford 36136 - 27187

FORTHCOMING PRODUCTIONS

22nd November - 3rd December

CWEN WATFORD & RICHARD BEBB in

THE QUEEN AND THE REBELS

by Ugo Betti

In a time of revolution a flamboyant and outspoken young woman is mistaken by "The Powers That Be" for The Queen, whom they wish to destroy. In fact, her background is far from royal and her humorous comments come from the back streets, not the Palace. At first she is delighted to tease them and laugh at their arrogance and stupidity. Then, suddenly, her alibi deserts her, the joke wears thin and the Powers demand a scapegoat. In a gripping last scene the tension mounts and, as dawn breaks, the woman has to make her most difficult and ironic decision. What started as a hilarious and unimportant brush between the individual and 'red tape' becomes a fight to the death. This thrilling play combines the elements of humanity and suspense to make an important and unforgettable evening.

We are delighted to welcome back GWEN WATFORD and RICHARD BEBB for this most exciting presentation.

December 6th - 10th—**ONE WEEK ONLY.**

(Saturday Matinee 2.30)

BALLET FOR ALL

with dancers from **THE ROYAL BALLET**

We are delighted to welcome this popular company to The Palace Theatre. Full programme details are obtainable in the foyer or from the Box Office or Publicity Manager. Prices will be those normally operating on Saturdays (see brochure).

December 12th - 17th For **ONE WEEK ONLY**

The Abbots Langley Gilbert & Sullivan Society

presents

THE PIRATES OF PENZANCE

by Gilbert & Sullivan

We are delighted to welcome back this popular and talented company and would advise patrons to book early to avoid disappointment.

OPENING BOXING DAY

THE WATFORD CIVIC THEATRE TRUST LIMITED

presents

CINDERELLA

(for times and prices apply Box Office or see leaflet in Foyer)

AVAILABLE IN THE FOYER are

LIBBY MORRIS' L.P. "AD-LIBBY" (32/7d.)

and copies of Dorothy Parker's book

THE BEST OF DOROTHY PARKER 3/6

(We acknowledge with thanks the co-operation of Hammond's Music Shop and The New English Library Limited).

THE STAGE

THE STAGE and
TELEVISION TODAY

Published jointly every Thursday—9d.

Two papers in one for everyone interested
in Theatre & TV

*There's
always
something new
and
interesting
at*



100 DEPARTMENTS AT YOUR SERVICE

OPEN UNTIL

8 P.M.

*EVERY
FRIDAY*

CLEMENTS : THE PARADE, WATFORD : TEL. 28211