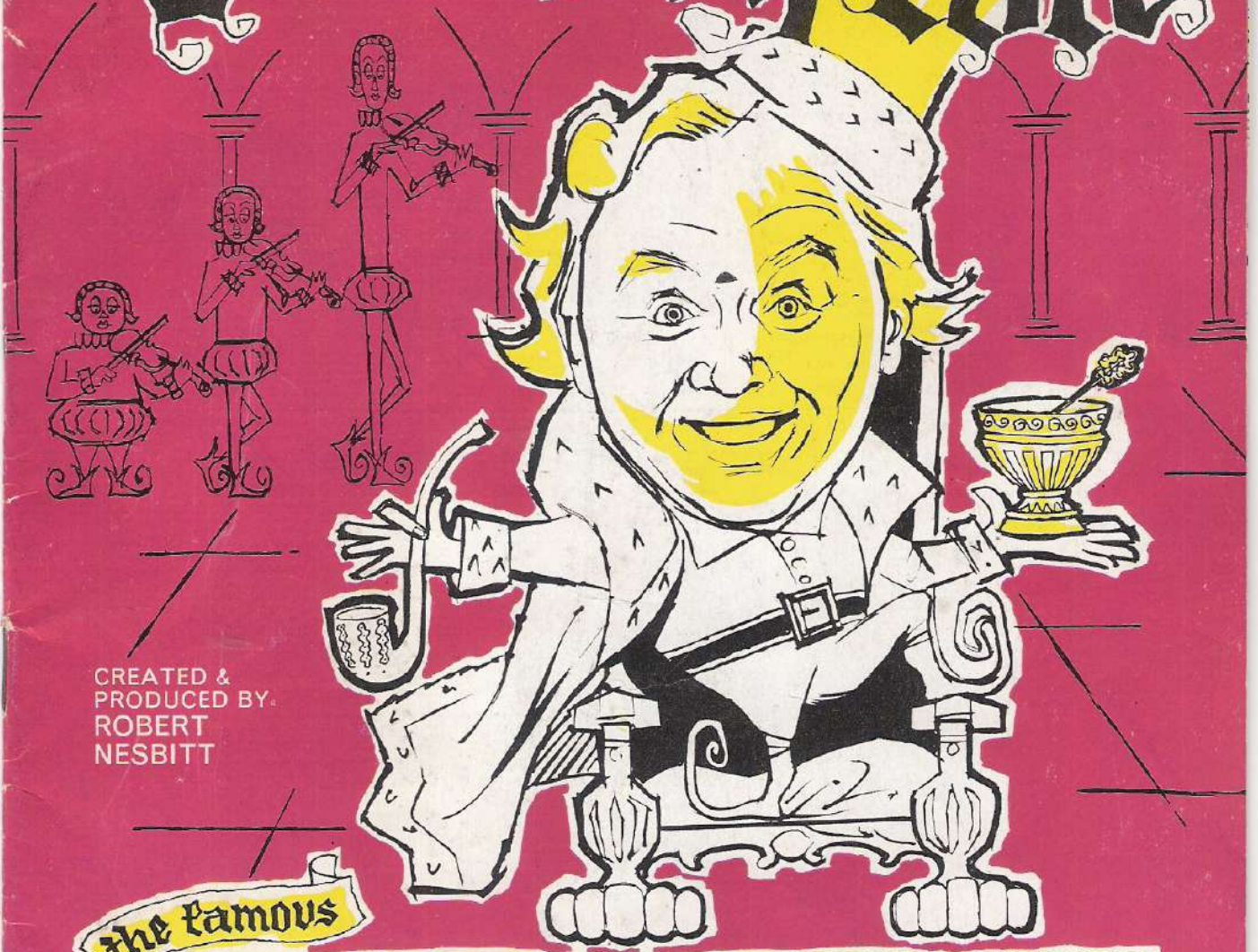


LESLIE A. MAGDONNELL
presents

Little

Waking the King



CREATED &
PRODUCED BY
ROBERT
NESBITT

the Famous

LONDON PALLADIUM

Programme one shilling

**HONG
KONG
EMPORIUM**

*Here you can obtain
Oriental foods, delicacies,
chinaware, fancy goods,
silks, umbrellas, lanterns
and decorative articles*

**53 RUPERT ST.
LONDON . W.1**

Telephone: GERard 8272

Near Globe Theatre

Shaftesbury Avenue, W.1

港香



酒樓

"Chopsticks Six?" "Not necessary. Fork or Spoon will do.
It is the taste in the Chinese food that counts"

OPEN 12 NOON
TILL MIDNIGHT
FULLY LICENSED
(SUNDAY 11 p.m.)

**HONG KONG
RESTAURANT**

58-60 Shaftesbury Avenue GERRARD 6847

**ON YOUR NEXT VISIT to the PALLADIUM
ARRANGE FOR YOUR PARTY
— LARGE OR SMALL —**



QUALITY INN

ARGYLL STREET W.1
GER 5997

Restaurant

SAMPLE MENUS AND PRICES GLADLY SENT TO YOU ON REQUEST

the famous

LONDON PALLADIUM

UNDER THE DIRECTION OF LESLIE A. MACDONNELL, O.B.E.

Proprietors: MOSS' EMPIRES, Ltd.

Chairman: PRINCE LITTLER, C.B.E.

Managing Director: LESLIE A. MACDONNELL, O.B.E.

Joint General Managers:
HARRY CLAFF & DAVID WILMOT

Artistes Booking Control:
CISSIE WILLIAMS

Advertising Manager:
A. A. COOMBS

Stage Director:
JACK MATTHEWS

Press Representative:
JOHN M. NEIMAN

Area Supervisor:
E. E. BRICKNELL

Chief of Production Department:
PETER PENROSE

First Performance : Wednesday, December 20th

Thursday, December 21st Friday, December 22nd at 7.30
subsequently

2.45

TWICE DAILY

7.30

Closed Xmas Day & Good Friday

ALL SEATS BOOKABLE IN ADVANCE 6/6 to £1

Phone: GERRard 7373-6 and GERRard 6166-7

BOX OFFICE OPEN 10 a.m. to 9.30 p.m.

Box Office Control: HARRY CLAFF

Postal Applications should include a stamped addressed envelope.

LESLIE A. MACDONNELL

presents

“LITTLE OLD KING COLE”

CREATED and PRODUCED

by

ROBERT NESBITT

Book by PHIL PARK

Music by LAURIE JOHNSON & PHIL PARK

Lyrics by NEVILLE PHILLIPS & PHIL PARK

Additional lyrics by
KERMIT GOELL

Additional dialogue by
CHARLIE DRAKE & RICHARD WARING

Choreographed by GEORGE CARDEN

Costumes designed & executed by R. ST. JOHN ROPER

Decor by TOD KINGMAN

First Act Finale designed by EDWARD DELANY

PLEASE NOTE: PHOTOGRAPHING IN
THE THEATRE IS FORBIDDEN



Next Attraction?

**but of
course—**

THE CHICKEN INN

(FULLY LICENSED

Right Opposite This Theatre

**OTHER CHICKEN INNS
IN THE HEART
OF THEATRELAND AT:-**

Haymarket—Leicester Sq.
Baker Street—Strand
Oxford Street—Victoria
Warwick St. (off Regent St.)

- * Anything from a snack to a Banquet at popular prices.
- * Chicken and Steaks a Speciality
- * Parties are our special feature



Mr Terroni

presents his compliments

... and will be happy to reserve you a table in the air-conditioned elegance of The Dorchester's Terrace Room, either for Dinner before the theatre or for Supper afterwards, with dancing until 2 a.m. to Albert Marland's Music. Should you, however, prefer the more informal, but equally air-conditioned, atmosphere of the Grill Room, Mr. Walter will take your instructions. Terrace Room or Grill Room, you will enjoy the same incomparable cuisine, and the same excellent service.

THE DORCHESTER

PARK LANE • LONDON MAYFAIR SSS8



**CHARLIE
DRAKE**
as
"LITTLE OLD KING COLE"



AFTER THE SHOW
LET'S ALL GO TO

VERREY'S

If you prefer the pleasure of a really quiet intimate atmosphere, a fine dinner served with 'millionaire' attention, then join us at Verrey's. We have a wonderful cellar, and you are bound to like the setting of this typically Parisian Bar/Grill

OPEN TILL MIDNIGHT

Dinner or Supper 15/- for 4 courses
80 dishes to choose from or à la carte

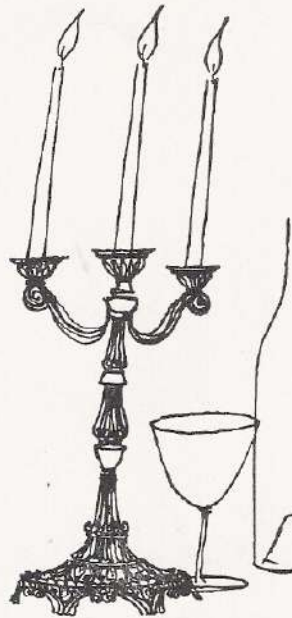
Reservations REGent 4495

Pre-Theatre meals served from 6 p.m.

VERREY'S

233 REGENT STREET, LONDON, W.1

(Close to Oxford Circus) Ample parking facilities




Murray's Cabaret Club

BEAK STREET, REGENT STREET, W.1



NOW at MURRAY'S THE MOST EXOTIC
EASTERN SPECTACLE
EVER PRESENTED
Arabian Rhapsody
LONDON'S MOST SENSATIONAL AND
COLOURFUL FLOOR SHOW PRODUCTION
1001 Nights of the Mystic East—in ONE!

At London's
Oldest
Luxury
Club

DINE from 7.30 p.m. **DANCE** till 3 a.m.

and see at 10 and 1 a.m. 50 minutes of the
**LARGEST AND MOST LAVISHLY
STAGED FLOOR SHOW IN TOWN**

which in its huge cast includes

45 OF ENGLAND'S LOVELIEST SHOWGIRLS

PHONE, GER. 4623, 3241, 6862

SPECIAL FACILITIES FOR VISITORS

**JANETTE
SCOTT**



**JACKIE
RAE**



**GARY
MILLER**



LESLIE A. MACDONNELL
presents

66 Little Old

Created by

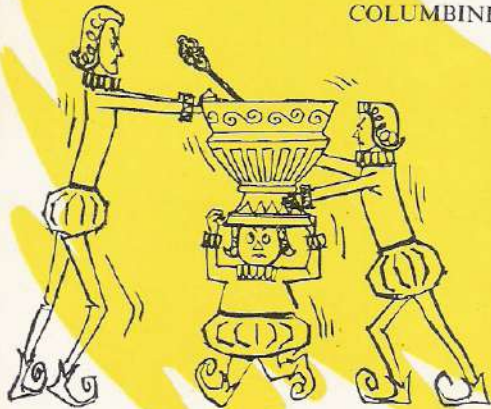
The Mortals:

KING COLE (man and boy)	CHARLIE DRAKE
THE COURT CHAMBERLAIN	HERBERT HARE
A YOUNG VISITOR	DENNIS GILMORE
THE DUKE ROLLO	ROGER DELGADO
THEOPHILUS } his foster parents {	.. BILLY DANVERS
SAMANTHA }	BERT BROWNBILL
MIRANDA (a shepherdess)	JANETTE SCOTT
BENEDICT (a fisherman) JACKIE RAE
VALENTINE (a prince) GARY MILLER
THE 'Bewitched' BENEDICT } <i>The</i> {	RICHARD GARNER
THE 'Bewitched' VALENTINE } <i>Beasts</i> {	.. JOHN HARMER
A BUTCHER HUGH ELTON
A BAKER	STUART PEARCE
HIS SON	MICHAEL HENRY
AN INNKEEPER	JACK FRANCOIS
THE SCARF DANCERS ..	SHEILA HOLT & TOM GILLIS
THE DUKE'S HENCHMAN ..	STUART PEARCE
A REBELLIOUS CITIZEN ..	JACK FRANCOIS
A COURT OFFICER	MICHAEL HENRY
A TEDDY BEAR	DOT WILLIAMS
AN ENCHANTED PRINCESS ..	JACQUELINE MORAN
THE TUMBLERS	THE SEVEN VOLANTS

The Immortals:

ARIEL (Spirit of the Magic Talisman) ...	SANDRA MICHAELS
A FRIENDLY WITCH	PAMELA CUNDELL
HARLEQUIN ... JOHN HARMER	CLOWN ... TOM GILLIS
COLUMBINE ... SHEILA HOLT	PANTALOON ... JACK FRANCOIS

REG COLE conducts
THE PALLADIUM ORCHESTRA



RO
NES

FULLY
BARS IN
OF THE

ENJOY
OF CHA
(MOET &
IN THE P

King Cole 99

A New
Pantomimical
Fantasy

and Produced
by
**BERT
BITT**

In the Land of Make Believe:
THE COURT OF OLD KING COLE
THE DUKE'S CASTLE IN THE MOUNTAINS
THE ISLE OF ILLYRIA
*THE MARKET PLACE — A BAKERY — THE WISHING WELL
OUTSIDE and INSIDE THE DOLPHIN TAVERN*
ON BOARD SHIP
INTERLUDE — A CAVALCADE OF KINGS
KING COLE'S MERRY REIGN
*CANDY TOWN — VALENTINE LAND — BEER and SKITTLES
CARNIVAL TIME and THE MERRY-GO-ROUND*

INTERVAL

THE CAPITAL OF CORONIA
THE FOOT OF THE MOUNTAINS
THE MAGIC FORGE and DRAGON'S LAIR
THE GATES OF THE CASTLE

INTERLUDE — A BLACK MAGIC REVEL

THE CASTLE VAULTS
THE BATTLEMENTS
MIRANDA'S BOWER IN THE CASTLE GARDENS
THE ROYAL PALACE OF CORONIA
THE ROBING ROOM
KING COLE'S CORONATION



LICENSED
ALL PARTS
THEATRE

A GLASS
MAGNIFICENT
(CHANDON)
MOUNTAIN COURT



Complete a wonderful evening
with "Candlelight & Rhythm"



dancing - the roaring 20's way to

HARRY ROY

and his new

TIGER RAGAMUFFINS



the Caribbean way to

BOSCOE HOLDER and the **PINKERTON BOYS**

THE CANDLELIGHT ROOM

AT THE MAY FAIR HOTEL Reservations: MAYfair 7777

JACK HYLTON presents THE SMASH HIT SHOW

at the

VICTORIA PALACE

VIC 1317

THE CRAZY GANG

NERVO
& KNOX

BUD
FLANAGAN

NAUGHTON
& GOLD

in their farewell show

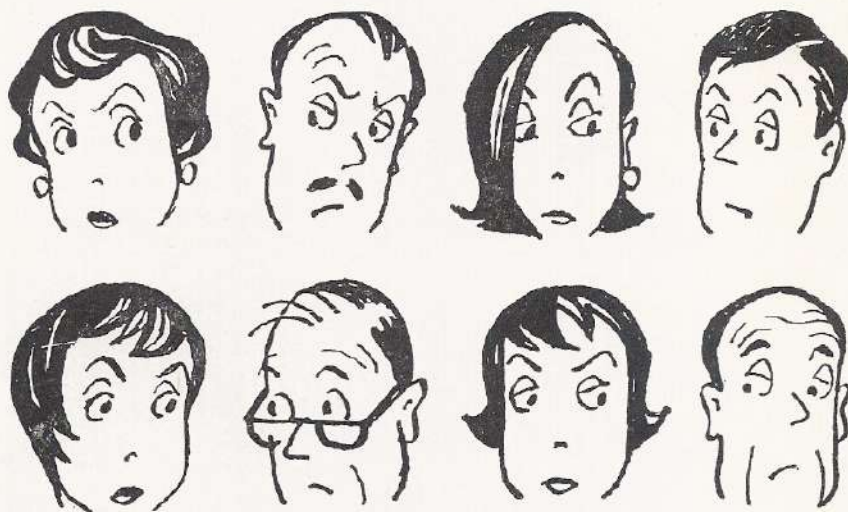
"YOUNG IN HEART"

with

"Monsewer" EDDIE GRAY

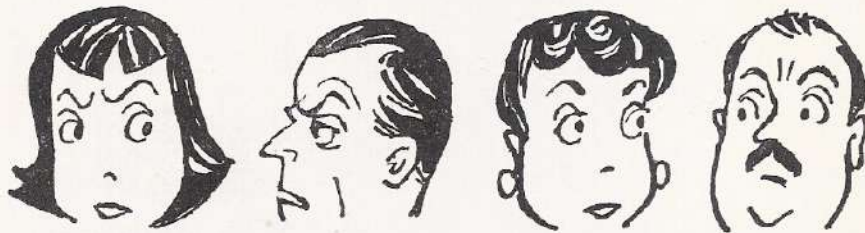
6.15 TWICE NIGHTLY 8.45

A Feast of Laughter for the Young in Heart of all Ages



***did you remember
to switch on the oven?***

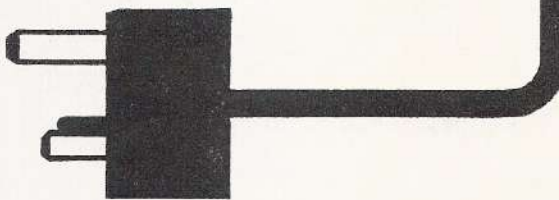
Not an odd question if you do your cooking the modern electric way! Just set the automatic time switch, go to work—or a play, and the oven will turn itself on and have your meal ready when you return. It's an easy life with electricity—lets you really relax and enjoy your leisure with your family



shop at your



showroom



LONDON ELECTRICITY BOARD

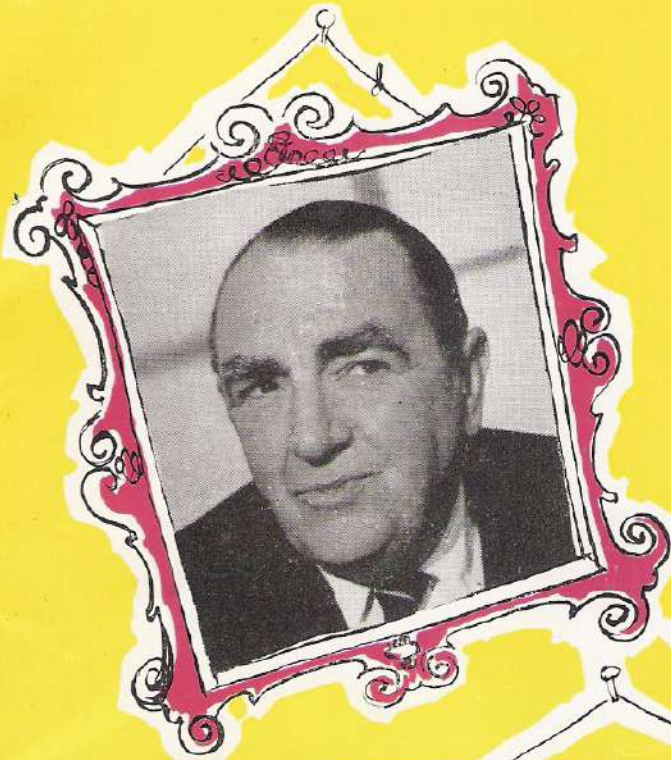
“That’s
better-
that’s
BOOTH’S!”

The finest Dry Gin



at the
theatre bar
take
the necessary
SCHWEPPE'S





**BERT
BROWNBILL**



**BILLY
DANVERS**



**The
AIDA FOSTER BABES**



Two Great Fielding Shows in London

THE MUSIC MAN

STARRING

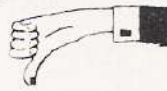
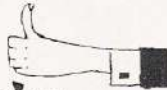
VAN JOHNSON

ADELPHI THEATRE

IAN CARMICHAEL

Funnier than ever
in

Critics' Choice



The hit comedy from Broadway

VAUDEVILLE THEATRE

**ALL
EXITS**

should be kept
clear at
the interval to
enable the
audience to get
to its

GUINNESS

There's no
Guinness like show
Guinness



G.E.3609.E

MUSICAL NUMBERS

"Old King Cole is Eighty-One Today"	Lyric by Robert Neville Music by Laurie Johnson
"Have Some Fun"	Lyric by Neville Phillips Music by Laurie Johnson
"The Isle of Illyria"	Lyric by Phil Park Music by Laurie Johnson
"Babes in the Wood"	Lyric by Neville Phillips Music by Laurie Johnson
"When a Man Comes Home from the Sea"	Lyric by Robert Nesbitt Music by Phil Park
"Could Be"	Lyric by Neville Phillips Music by Laurie Johnson
"I'm Wishing"	Lyric by Phil Park Music by Laurie Johnson
"Cole is Gonna Be King" "Three's a Crowd"	Lyric & Music by Phil Park Lyric by Neville Phillips Music by Laurie Johnson
"I Wanna Make Everybody Round Me Happy"	Lyric by Kermit Goell Music by Laurie Johnson
"Candytown"	Lyric by Phil Park Music by Laurie Johnson
"Love is a Wonderful Thing" "Time to Fall in Love" "Beer and Skittles"	Lyrics by Neville Phillips Music by Laurie Johnson Lyric by Phil Park Music by Laurie Johnson
"Song of the Duke's Guards" "Miranda"	Lyric & Music by Phil Park Lyric by Phil Park Music by Laurie Johnson
"I'm a Witch" "Wonder Flower" "Sweethearts Forever"	Lyric & Music by Phil Park Lyric & Music by Phil Park Lyric by Kermit Goell Music by Laurie Johnson

ORCHESTRATIONS & INCIDENTAL MUSIC
by RONNIE HANMER
'KING COLE'S MERRY REIGN' Orchestrated
by BURT RHODES

Personal Assistant to Mr. Nesbitt **PHIL PARK**
Production Assistant **DAVE JACKLEY**
Principal Male Dancers—John Harmer and Richard Garner
Dancing Girls—Janet Allman, Jennifer Allman, Joy Allan,
Carole Brooks, Dorelle Burrows, Elizabeth Belin,
Sadie Colclough, Sandy Dillon, Valerie Gibson,
Caroline Haig, Pamela Hill, Merry Johnson, Diana
Langton, Vicki Mitchell, Elizabeth Mills, Sandra
Martin, Pauline Nichols, Rosemary Ogle, Susan
Robinson, Tanya Shaffer, Vicky Udall, Brenda Voak,
Lynette Williams, Maureen Willsher, Jennie Walton,
Margaret Webb.
Dancing Boys—Eddie Ambrose, Paul Christian, Malcolm
Davey, Leigh Foster, Peter Fletcher, Collin Partington,
Robin Willett, Gordon Yeats.
Ballet Master - Seamus Gordon
Bill Shepherd Singers—James Armstrong, Tony Clark,
Arnold Chazen, Steven Derek, Hugh Elton, George
Holden, Richard Keen, Dino Rocco, Bob West,
Llewellyn Williams.
KIRBY'S FLYING BALLET
THE AIDA FOSTER CHILDREN

Costumes designed and executed by R. St. John Roper, Ltd.
Wigs by Nathanwigs. Shoes by Gamba. Scenery constructed
and painted by Tod Kingman (Keystudios) Ltd. First Half
Finale designed and painted by Edward Delany. Properties
by Stage Decor, George Drury and Keystudios. Flowers by
Floral Decor Ltd. Nylon stockings by Kayser Bondor.
Charlie Drake Cloak routine by arrangement with Lauri
Lupino Lane.

The Management reserve to themselves the right to refuse
admission to the theatre and to make any change, vary or
omit any part of the programme without previous notice.

In accordance with the requirements of the London County
Council.

1.—The public may leave at the end of the performance or
exhibitions by all exit doors and such doors must at that time
be open. 2.—All gangways, corridors, staircases and external
passageways intended for exit shall be kept entirely free from
obstruction whether permanent or temporary. 3.—Persons
shall not be permitted to stand or sit in any of the gangways
intersecting the seating or to sit in any of the other gangways.
If standing be permitted in the gangways at the sides and the
rear of the seating, it shall be limited to the numbers indicated
in the notices exhibited in those positions. 4.—The safety
curtain must be lowered and raised in the presence of each
audience.



King Therm

Who's missing from this picture? The wicked uncles, Work and Waste—banished by Good King Therm from millions of homes where GAS makes life easier all round. That's why he attracts the loyal support of housewives everywhere. They know that gas, with its speed and flexibility, saves time, labour and money too.

Thinking of central heating? By Gas! it's wonderful. And on the special Cheap Gas rates running costs are agreeably low. There's a useful booklet on the subject, to be had on request at your gas showroom.



North Thames Gas

THE
OUTSTANDING
CIGARETTE
OF THE DAY



WELL MADE • WELL PACKED

TOBACCO AT ITS BEST

*Published by Stilwell Darby & Co. Ltd., Advertising Contractors, 24 Old Burlington Street, London, W.1
Tel. No. REgent 8671 (5 lines) Printed by John Waddington Ltd., London*