

The illustration depicts the facade of the Duke of York's Theatre. At the top, a row of tall, narrow windows is shown. Below them, a decorative cornice features the words "THE DUKE OF YORKS" in a serif font. The main title "THE DUKE OF YORK'S" is written in large, bold, blue-outlined letters across the middle. Below this, another row of windows is shown, with the word "THEATRE" written in large, bold, blue-outlined letters across the bottom. The entire scene is framed by a decorative border with two torches on either side.

THE
DUKE OF YORKS
THE
DUKE OF YORK'S
THEATRE

PROGRAMME

INSTANT-ENDLESS
HOT WATER
BY **GAS**



for bath after bath after bath

North Thames Gas

THE
DUKE OF YORK'S THEATRE

ST. MARTIN'S LANE, LONDON, W.C.2

LICENSED BY THE LORD CHAMBERLAIN TO E. W. CROSSLEY TAYLOR

Managing Agents ... THEATRE MANAGERS, LTD.

In association with

MICHAEL REDGRAVE PRODUCTIONS LTD.

F.E.S. (PLAYS) LTD.

presents

SYBIL THORNDIKE
MARIE LÖHR **LEWIS CASSON**

IN

**"WAITING
IN THE WINGS"**

BY

NOËL COWARD

DIRECTED BY MARGARET WEBSTER

SCENERY AND COSTUMES BY MOTLEY

Presented at the Duke of York's Theatre, 7th September, 1960

"WAITING IN THE WINGS"

May Davenport	MARIE LÖHR
Cora Clarke	UNA VENNING
Bonita Belgrave	MAIDIE ANDREWS
Maud Melrose	NORAH BLANEY
Deirdre O'Malley	MAUREEN DELANY
Estelle Craven	EDITH DAY
Almina Clare	MARY CLARE
Perry Lascoe	GRAHAM PAYN
Miss Archie	MARGOT BOYD
Osgood Meeker	LEWIS CASSON
Lotta Bainbridge	SYBIL THORNDIKE
Dora (her dresser)	BETTY HARE
Doreen	JEAN CONROY
Sarita Myrtle	NORA NICHOLSON
Zelda Fenwick	JESSICA DUNNING
Doctor Jevons	ERIC HILLYARD
Alan Bennet	WILLIAM HUTT
Topsy Baskerville	MOLLY LUMLEY

Directed by **MARGARET WEBSTER**

Scenery and Costumes by **MOTLEY**

The action of the play takes place in "The Wings,"
a charity home for retired actresses.

ACT I

Scene 1. A Sunday Afternoon in June.
Scene 2. 3 a.m. on a Monday morning,
a month later.

ACT II

Scene 1. A Sunday Afternoon in September.
Scene 2. Several hours later.
Scene 3. A week later.

ACT III

Scene 1. The Evening of Christmas Day.
Scene 2. A Sunday Afternoon in June.

There will be an interval of ten minutes between each Act.

Scenery built by Brunskill & Loveday. Painted by Alick Johnstone. Lighters by Renson. Nylon stockings by Kayser Bondor. Playing cards supplied by De La Rue Co. Ltd. Sound Equipment by Stagessound (London) Ltd. Olivier cigarettes by Benson & Hedges. Radiators lent by Hursel. Motor Horn by Joseph Lucas Ltd. Electrical Equipment by Strand Electric & Engineering Co. Ltd. Wardrobe supervised by James Parker, 17 Wardour Street, W.1.

Company and Stage Manager	} For	KENNETH FRASER			
Deputy Stage Manager		} F.E.S.	IAN GREY		
Assistant Stage Manager			} (Plays)	JENNIFER AYLNER	
Wardrobe Mistress				} Ltd.	KATHLEEN FLANAGAN
Press Representative					GEORGE FEARON

Musical arrangements by Arthur Furby

The management reserve the right to refuse admission, also to make any alteration in the cast which may be rendered necessary by illness or other unavoidable causes.

Deputy Manager and Box Office Manager (for Duke of York's Theatre) H. A. Cole

SMOKING IS NOT PERMITTED IN THE AUDITORIUM

Box Office (Temple Bar 5122/3) open daily 10 a.m. to 8 p.m.

In accordance with the requirements of the Lord Chamberlain—1.—The public may leave at the end of the performance by all exit doors and such doors must at that time be open. 2.—All gangways, passages and staircases must be kept entirely free from chairs or any other obstructions. 3.—Persons shall not in any circumstances be permitted to stand or sit in any of the gangways intersecting the seating, or to sit in any of the other gangways. If standing be permitted in the gangways at the sides and rear of the seating, it shall be strictly limited to the number indicated in the notices exhibited in those positions. 4.—The safety curtain must be lowered and raised in the presence of each audience.

In the interest of public health this theatre is disinfected throughout with Jeypine Germicide and Disinfectant.



Patsy says...
Huntley & Palmers
 CAKE
... served in this Theatre

At the bar
JENNERS
GOLDEN
ALE

"That's better-
 that's
BOOTH'S!"
The finest Dry Gin

SCAMPI · OYSTERS · SALMON
GARNERS
 RESTAURANT
 FAMOUS FOR
London's Finest
SEAFOODS
 AND
STEAKS
 27 Wardour St.,
 Leicester Sq., W. 1. Ger. 1287.
 DOVER SOLES · TROUT · HALIBUT

ROYAL COMMONWEALTH SOCIETY FOR THE BLIND
121 VICTORIA STREET, LONDON, S.W.1
 Patron: Her Majesty the Queen.

"The care of the blind is not just an official matter; it concerns all of you who, under God's mercy, can see."
 Lord Halifax, President of the Society

With the help of the Society:

- Surveys of blindness have been undertaken;
- 28 new schools and 45 new training centres have been established;
- Braille alphabets have been produced in many languages.

But this is only a beginning—much remains to be done.
 Donations sent to the above address will be most gratefully acknowledged.

DUKE OF YORK'S THEATRE
 (Licensed by the Lord Chamberlain to E. W. Crossley Taylor)

Refreshment of the Best Quality can be obtained in the Saloon Lounges in the Foyer and the back of the Stalls.

The Management call the attention of Patrons to the special service of Afternoon Teas which are served by attendants in the auditorium.


The Bars are under direct control of the Management.

ASK FOR
LIGHT
TOLLY
ALE
 AT THE BARS

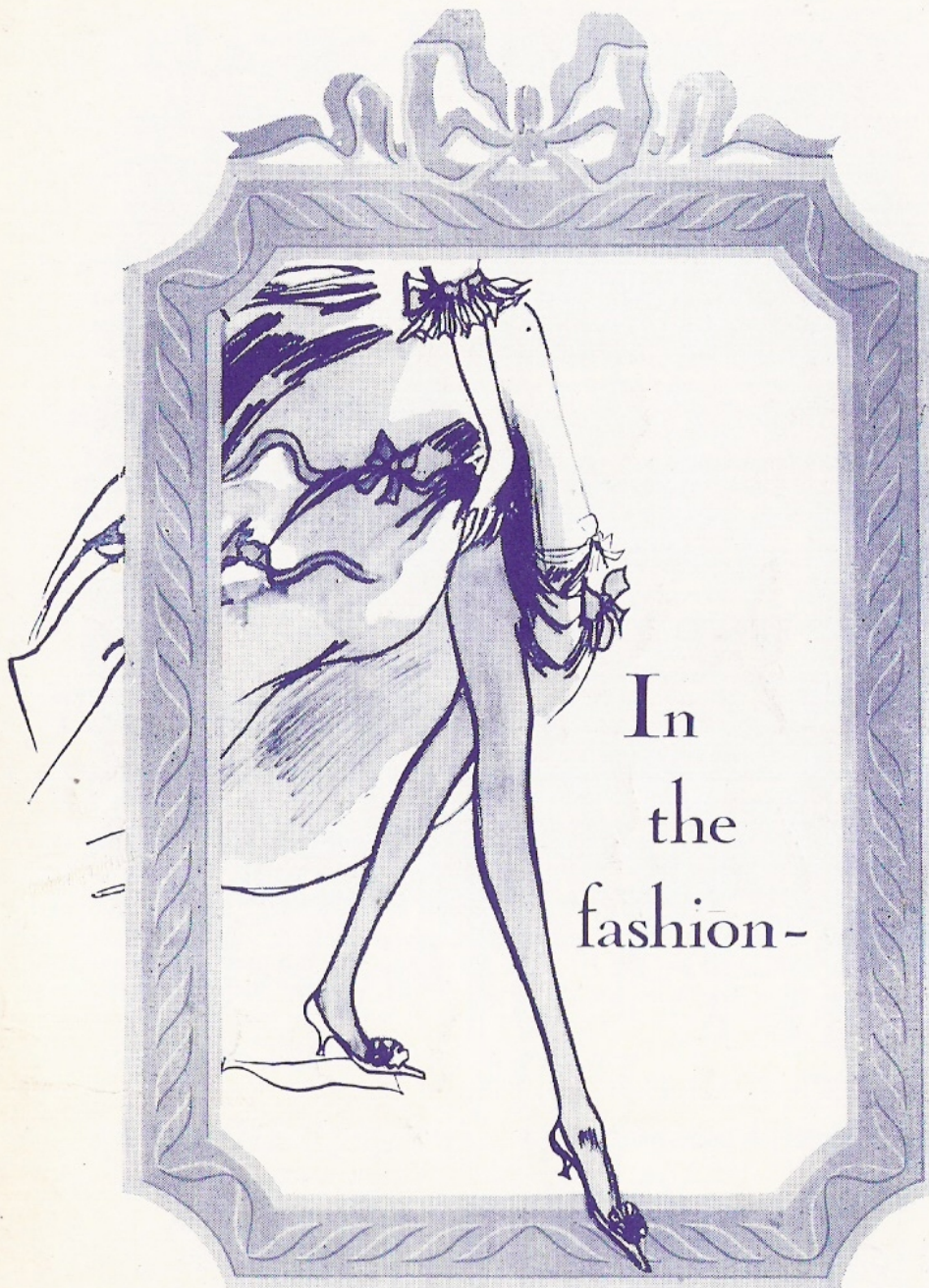
ASK FOR
Gordon's
 AT THE BARS

WHITEWAY'S
CYDERS
 SOLD AT THE BARS OF THIS THEATRE
" SANATOGEN "
 (REGISTERED TRADE MARK)
TONIC WINE

Meet
Mr Brandyman
 -at the bars



Make friends with
MARTELL



In
the
fashion-

Christian Dior Stockings

AT ALL LEADING STORES



PRINTED BY KELIHER, HUDSON & KEARNS, LTD., HATFIELDS, LONDON, S.E.1

26/8