

**ST. MARTIN'S  
THEATRE**

1/2

**THE  
GRASS  
IS  
GREENER**





**CELIA JOHNSON** studied at RADA, made first London appearance in "A Hundred Years Old" at the Lyric, Hammersmith. After playing in "Cynara" "The Circle" and "After All", made her New York debut as Ophelia. Played in "Ten Minute Alibi" at the Embassy and Haymarket, then appeared in "The Wind and the Rain" at the St. Martin's for two years. She played Elizabeth Bennet in "Pride and Prejudice" with Hugh Williams as Mr. Darcy, and again appeared with Hugh Williams in "Old Music". Was away from the theatre for five years, reappearing as Saint Joan with the Old Vic Company at the New

Theatre. She also played Viola for the Old Vic Company in Italy. Her recent plays include "The Reluctant Debutante" and "Flowering Cherry". Her films include "The Captain's Paradise" (with Alec Guinness) and four Noel Coward pictures "In Which We Serve", "Brief Encounter" "This Happy Breed" and "The Astonished Heart".

**JOAN GREENWOOD** studied at RADA, made her first appearance at the Apollo in "The Robust Invalid", followed by "Little Ladyship" and "The Women" (playing Little Mary). Succeeded Deborah Kerr as Ellie Dunn in "Heartbreak House", with Edith Evans and Robert Donat at the Cambridge. Toured with Donald Wolfit's company as Ophelia, and Celia in "Volpone". Played Bertha in "Frenzy" at the St. Martin's and Sabina in "Young Wives Tale" at the Savoy. Made her first New York appearance as Lucasta Angel in T. S. Eliot's "The Confidential Clerk" and returned to London to succeed Lili Palmer in "Bell, Book and Candle". Scored an outstanding success in the title role of "Lysistrata", at the Royal Court and Duke of York's Theatres. Her films include "Whisky Galore" "Kind Hearts and Coronets" and "Stage Struck".





# ST. MARTIN'S THEATRE

WEST STREET, CAMBRIDGE CIRCUS, W.C.2.

Licensee: J. M. COOK

Lessees: BRIGHT ENTERPRISES LTD.

Managing Directors: J. M. COOK & A. M. COOK

Tel.: TEM. BAR 1443

---

By arrangement with BRIGHT ENTERPRISES LTD.

ANNA DEERE WIMAN and JACK MINSTER

present

CELIA JOHNSON

JOAN  
GREENWOOD

HUGH  
WILLIAMS

in

## THE GRASS IS GREENER

a Comedy

By HUGH and MARGARET WILLIAMS

with

MORAY WATSON

and

EDWARD UNDERDOWN

Directed by JACK MINSTER

Designed by HUTCHINSON SCOTT



# THE LAUGHTER SHOW!

*"The laughs came quick, the laughs came easy."*

—JOHN BARBER, DAILY EXPRESS

*"With every character ALFRED MARKS had us rolling last night . . . Marks is Marvellous!"*

—DAVID NATHAN, DAILY HERALD

*"Bright light entertainment. NAUNTON WAYNE is so natural, so pleasant, so relaxed and friendly that we are ready to go with him whenever he suggests. And under that deceptively easy air, the skill with which he points a line is expert beyond criticism."*

—W. A. DARLINGTON, DAILY TELEGRAPH

*"Alfred Marks employed half a dozen wigs and the surface brilliance of revue . . . it was a night of Marks with dazzling high spots."*

—HAROLD CONWAY, DAILY SKETCH

*"Wonderful!"* —REYNOLDS NEWS

## "A day in the life of...."

JACK POPPLEWELL'S

### UNUSUAL COMEDY

NOW AT THE

## SAVOY THEATRE



# THE GRASS IS GREENER

---

*Characters in order of appearance:*

Victor .. .. HUGH WILLIAMS

Sellars .. .. MORAY WATSON

Hilary .. .. CELIA JOHNSON

Charles .. .. EDWARD UNDERDOWN

Hattie .. .. JOAN GREENWOOD

Directed by JACK MINSTER

Designed by Hutchinson Scott



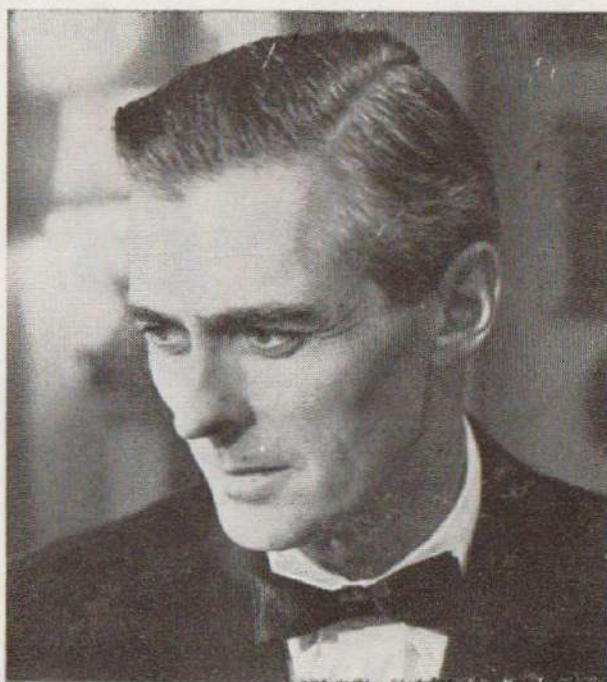


**HUGH WILLIAMS** studied at RADA, made first London appearance at the Kingsway in "The Yellow Jacket". Was at Liverpool Playhouse for two years, then appeared at the Lyric in "The Best People" and "The Gold Diggers". Went to Australia with Irene Vanbrugh in "Caroline" "The Letter" and "The High Road" and then to America and Canada, playing Stanhope in "Journey's End". Since then he has been in a long list of plays including "Grand Hotel", "Strange Orchestra", "The Green Bay Tree", "Dear Octopus", "Portrait in Black" "Affairs of State" and "Book of the Month". Scored a notable success

as Trigorin in "The Seagull" in John Clement's classical season at the Saville. With his wife Margaret wrote, "Plaintiff in a Pretty Hat" and "The Happy Man", and played the leading part in both.

#### **EDWARD UNDERDOWN**

first appeared in London in Noel Coward's revue, "Words and Music" at the Adelphi Theatre following this with "Nymph Errant", "Streamline" and "Stop Press". He then played with Noel Coward and Gertrude Lawrence in "To-Night at 8.30" in London and New York. After the war, he has appeared in many films, including "They Were Not Divided", "The Woman with No Name", "The Dark Man", "Street of Shadows", "The Voice of Merrill", "The Rainbow Jacket", etc.





The action takes place in a house in Hampshire during the month of May

ACT I

Scene 1 .. .. . A Friday afternoon  
 Scene 2 .. .. . A week later

*Interval of Fifteen minutes*

ACT II

Scene 1 .. .. . The following evening  
 Scene 2 .. .. . Later, the same night

Miss Johnson's dresses in Act 2 by Victor Stiebel.

Miss Greenwood's dresses by Hardy Amies.

Mink coat by Calman Links Ltd.

Miss Greenwood's lingerie by Lydia Moss and Motley at Elizabeth Curzon.

Mr. Underdown's suit in Act I and Mr. Watson's clothes by M. Berman Ltd. Scenery painted by Alick Johnstone, built by Brunskill & Loveday. Electrical equipment by Strand Electric and Engineering Co. Ltd. Furniture by Bullens (Elstree) Ltd. Cuckoo recording arranged by Ludwig Koch. "Retinette" camera kindly supplied by Kodak Ltd. Claridges matches by courtesy of Claridges. Champagne by Moët and Chandon. "Stand Fast" Scotch Whisky by Wm. Grant & Sons Ltd. Plymouth Gin by Coates & Co. (Plymouth) Ltd. Mineral waters by Schweppes. "Scrabble" provided by Hamleys Ltd., 200 Regent Street, W.1. Mr. Watson's spectacles by Dollond & Aitchison Ltd. Telephone kindly lent by the G.P.O. Nylon stockings by Kayser-Bonder. Lighters by Ronsen. Watches by Ingersoll Ltd. Nescafé by courtesy of The Nestlé Co., Ltd. Streamline Hot Water Bottle by William Freeman & Co. Ltd. Crystamint Creams by Joseph Terry & Sons Ltd. Craven 'A' cigarettes by Carreras Ltd.

|                                   |   |   |
|-----------------------------------|---|---|
| General Manager .. .. .           | } For ANNA DEERE<br>WIMAN & MINSTER<br>PRODUCTIONS LTD. | } GRACE RANSOM<br>JOHN SYKES<br>HENDRIK BAKER<br>VERENA KIMMINS<br>DAVID FAIRWEATHER<br>(HUN. 0681) |
| Production Manager .. .. .        |   |   |
| Company and Stage Manager .. .. . |   |   |
| Deputy Stage Manager .. .. .      |   |   |
| Press Representative .. .. .      |   |   |

GENERAL MANAGER for St. Martin's Theatre .. .. . THOMAS CRACKNELL

BOX OFFICE (Miss E. Bostwick) .. .. . Temple Bar 1443/4

**SMOKING IS NOT PERMITTED IN THE AUDITORIUM**

This Theatre is disinfected throughout with Jeyes' Fluid.

The Management reserve the right to refuse admission and to make any changes in the cast necessitated by illness or other unavoidable causes.

*In accordance with the requirements of the Lord Chamberlain—*

1.—The public may leave at the end of the performance by all exit doors and such doors must at that time be open. 2.—All gangways, passages and staircases must be kept entirely free from chairs or any other obstructions. 3.—Persons shall not in any circumstances be permitted to stand or sit in any of the gangways intersecting the seating or to sit in any of the other gangways. If standing be permitted in the gangways at the sides and rear of the seating, it shall be strictly limited to the number indicated in the notices exhibited in those positions. 4.—The safety curtain must be lowered and raised in the presence of each audience.



— *Opening March 17* —

MURIEL  
PAVLOW

DEREK  
FARR

in

# WOLF'S CLOTHING

A New Comedy by  
KENNETH HORNE

with

PATRICK CARGILL

ELSPET GRAY

VIOLA LYEL

RONALD ADAM

ANGELA BROWNE

Directed by ANTHONY SHARP  
Setting by LAURENCE IRVING

— *Strand Theatre* —

TEM. 2660





MORAY WATSON trained at Webber-Douglas School and then went into repertory at Nottingham, Leatherhead, Worthing, Windsor and Liverpool. His first job after leaving the Playhouse Liverpool was at the St. Martin's in "Small Hotel". Two years later he found himself at the same theatre playing Hugh Williams's son in "Plaintiff in a Pretty Hat", and is back again, this time as his Butler. Other plays include "A River Breeze" at the Phoenix, with Phyllis Calvert, Roland Culver and Naunton Wayne, and "Phèdre", with Margaret Rawlings in Theatre-in-the-Round. Last TV appearance in Associated Red-

iffusion's third birthday production "Women in Love".

---

For my Fair Lady

it must be

**MOUTSSETIC**





**THE SUCCESS OF THE CENTURY !**

Bookings at all Gas Showrooms

***NORTH THAMES GAS***





... at the  
theatre bar  
take the  
necessary  
**Schweppes**

ASK FOR

**Gordon's**

AT THE BARS

**STOWER'S FRUIT SQUASHES**  
ON SALE AT ALL BARS



If you cannot read this without opera glasses you need a Jenners Golden Ale. Even if you can manage to read it you'd still be wise to have a Jenners at the interval. Just ask at the Bar.

**Meet Mr Brandyman**  
-at the bars



Make friends with  
**MARTELL**

SERVED IN THIS THEATRE

ASK FOR

**TOLLY LIGHT BITTER ALE**

AT THE BAR

**"BULL DOG"**



BASS, WORTHINGTON, GUINNESS  
On sale at all bars of this Theatre



BY APPOINTMENT TO THE ROYAL HOUSEHOLD  
Sole Importers: THE BOOTH COMPANY, LIMITED, LONDON

SERVED IN THIS THEATRE

**GUERRERO'S**  
IMPERIAL PALE DRY  
**SHERRY**

Not too dry!

**BORGES**  
OLD TAWNY  
**PORT**

The Port of Kings

SHIPPED BY B. B. MASON & COMPY, LTD.

PUBLISHED BY PAYNE-JENNINGS & KILLICK LTD., GLOUCESTER HOUSE, 19 CHARING CROSS RD., W.C.  
PRINTED BY JOHN WADDINGTON (STOKE NEWINGTON) LTD., LONDON, N.16



PLEASE  
SEE THAT  
THIS SEAL  
IS  
UNBROKEN

*Air Travel*

INSURE Yourself  
and your Baggage



*Chief Administration:*

7 Chancery Lane, London, W.C.2.

WORLD WIDE FACILITIES — WORLD WIDE COVER