

IT'S EASY TO GET HERE

DLR

Greenwich, Cutty Sark
(5 minutes walk)

RAIL

Greenwich Station
(5 minutes walk)

UNDERGROUND

Jubilee line to Canary Wharf
DLR to Cutty Sark/Greenwich

BUSES

177, 180, 188, 199, 286, 386, M1,
M2, N1

MOBILITY BUSES

851, 852, 853, 856

Visit www.tfl.gov.uk
for travel updates

HOW TO BOOK

IN PERSON at the Box Office

BY TELEPHONE
ON 020 8858 7755

Booking fee £1 per ticket, postage 90p

ONLINE - 24 HOURS A DAY

at www.greenwichtheatre.org.uk
Booking fee £1 per ticket, postage 90p
Group discounts not available online

BOX OFFICE OPENING TIMES

Non-performance days:

Mon - Sat 1pm - 6pm

Performance days:

Mon - Sat 1pm - curtain up

Sundays: 3 hours before curtain up

CONCESSIONS

Concessions are available on every performance for full-time students, senior citizens, theatre union members and those in receipt of jobseeker or disability benefits. Complimentary tickets are available to carers of patrons who are disabled.

AUTUMN SEASON 2013

GREENWICH
THEATRE LONDON

GREENWICH
THEATRE LONDON

BOX OFFICE 020 8858 7755
CROOMS HILL, LONDON, SE10 8ES
www.greenwichtheatre.org.uk


ROYAL *borough of*
GREENWICH

BOX OFFICE 020 8858 7755
www.greenwichtheatre.org.uk

WELCOME

What would you like to see this season? An internationally acclaimed performance company from America? A season of five-star hits from the Edinburgh Festival? A family show at dusk in a meadow? A festival of new writing, a musical, a drama or some sharp-edged stand-up comedy? A Halloween event on a barge? Or a sneak preview of a new show, presented in the intimate surroundings of our bar?

This season is all about what's possible. What's possible on our stage, around our building or around this borough. What's possible with a puppet, a musical instrument or a brand new script. What's possible in the magical industry of theatre. Some of it started from a point of looking impossible but we've worked to make it happen and here it is.

We hope you enjoy sharing the season with us.

James

James Haddrell
Artistic & Executive Director

THE FLANAGAN COLLECTIVE PRESENTS

BABYLON

The Flanagan Collective would like to invite you to a sharing of their new show. It's about Kings, Queens and revolutions; it's about looking after each other and keeping the special things safe; it's about what happens if we don't. It's full of music, instruments and, hopefully, a bit of a knees up. This is the result of some initial development and we'd love to know what you think, so please stay around and chat.

Developed with Derby Theatre, Greenwich Theatre and The Fauconberg Arms.

Kindly supported by Arts Council England

SUN 8 SEPTEMBER

Eve 8pm

Tickets: Pay What You Think

This is a showcase of a brand new show, presented to generate feedback for further development. We would love to have you there – so you set the price! (Suggested price £4)

THEATRE MOVEMENT BAZAAR AND
GREENWICH THEATRE PRESENTS

★★★★★
EDINBURGH FESTIVAL HIT

TRACK 3

a new perspective on Chekhov's *Three Sisters*

In this eagerly anticipated new work, Theatre Movement Bazaar dramatically derails *Three Sisters* from its Victorian origins with exhilarating movement, dance, song and humour, setting the itinerary for a 21st century existential extravaganza.

Returning to Greenwich Theatre after last year's triumphant production of *Anton's Uncles*, Los Angeles based Theatre Movement Bazaar transfer their latest show to London following an acclaimed run at the Edinburgh Festival.



★★★★★

"dangerous to miss, Track 3 is a glorious treat that is sure to bring a smile to the face... incredible... I may just have to go again."

BROADWAY BABY

"Brimming with energy, physical inventiveness, ensemble excellence and sharp comedy this is an unmissable production"

FRINGE REVIEW

TUE 27 – SAT 31 AUGUST

Eves 7.30pm, Sat Mat 2.30pm

Tickets £15 (Concessions £10)

First night and matinee - all tickets £10

FringeReview

HIGHLY RECOMMENDED
SHOW

TUCKED IN PRODUCTIONS AND GREENWICH THEATRE PRESENT

★★★★★
EDINBURGH FESTIVAL HIT

SAM ROSE IN THE SHADOWS

Sam Rose carries a heavy box. A sad thing box...

A magical new play for anyone who has ever felt sad but now feels a little bit better. Told through playful visual theatre and delicate puppetry by Tucked In, creators of *Tim & Light*, *The Golden Cowpat* and *Jackajack*.

TUE 3 – SAT 7 SEPTEMBER

Eves **7.30pm**, Sat Mat **2.30pm**

Tickets **£15** (Concessions **£10**)

First night and matinee - all tickets **£10**

“exquisitely crafted puppets, spellbinding music... stunning”

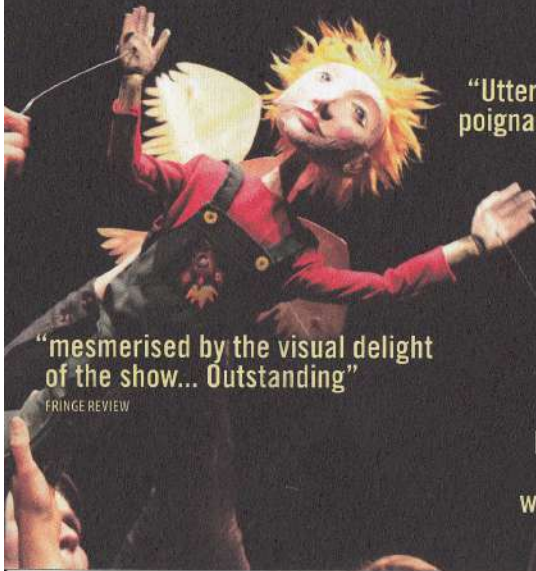
PRIMARY TIMES

★★★★★
“Utterly accessible, poignant, intelligent, heartfelt and uplifting...”

REMOTEGOAT

★★★★★
“especially moving... stunning... uplifting and beautiful and well, well worth a watch”

BROADWAY BABY



“mesmerised by the visual delight of the show... Outstanding”

FRINGE REVIEW

SELL A DOOR THEATRE COMPANY IN ASSOCIATION WITH GREENWICH THEATRE PRESENTS

★★★★★
EDINBURGH FESTIVAL HIT

“enthraling top quality musical... outstanding”

MUST SEE SHOW, THE STAGE

SINCERELY, MR TOAD

STARRING
KEITH JACK



Trapped in a mundane existence and struggling to sustain his family, the daydreamer Kenneth Grahame longed to write wild adventure tales, and pursue his love of nature and literature. Then one day a stranger tried to put a bullet through his head, and Grahame was never the same again...

Keith Jack was a runner up on BBC's *Any Dream Will Do* and has since been seen by over 2 million people on tour, playing the lead in *Joseph and the Amazing Technicolor Dreamcoat*.

★★★★★
“an outstanding cast”

EDINBURGH EVENING NEWS

★★★★★
“Impeccable... Keith Jack shows moments of musical theatre genius in his solo songs portraying the inner life of Alastair Grahame”

REMOTEGOAT

TUE 10 – SAT 14 SEPTEMBER

Eves **7.30pm**, Sat Mat **2.30pm**

Tickets **£17.50** (Concessions **£12.50**)

First night and matinee - all tickets **£12.50**



GOMITO PRODUCTIONS AND GREENWICH THEATRE PRESENT

Roost

An ~~indoor~~ ~~OUTDOOR~~ ~~indoor~~ ~~OUTDOOR~~ theatre show



"you could probably live on theatre like this"

THREE WEEKS ON THE ALCHEMYSTORIUM

In the ruins of a house four people are trying to build their dream home. Some things get patched up while others get knocked down in a story about trying to make things better, whatever 'better' might be.

ROOST is a messy physical comedy, performed outside at sunset, in the frame of a specially built, ramshackle house. Wrap up warm, bring rugs and cushions, your friends and family to something a bit different in Oxleas Meadows.

ROOST is the newest production by Greenwich Theatre's acclaimed Associate Company Gomito, last seen in Greenwich with the five-star hit *The Alchemystorium*.

TUE 10 – SUN 15 SEPTEMBER

Eves **8.30pm**

Tickets **£15** (Concessions **£12.50**)

Children **£10**; Family ticket (four people) **£44**

Suitable for ages 6+

Venue: Oxleas Meadow, Shooters Hill, London SE18 3JA

★★★★★
"a wonder to behold"
THE SCOTSMAN ON THE ALCHEMYSTORIUM



FINGER IN THE PIE IN ASSOCIATION
WITH GREENWICH THEATRE PRESENTS

moby dick

The first great American novel is brought to the stage with Finger in the Pie's award winning combination of live music, visual story-telling, dark humour and chaos...

Get ready for a rip-roaring high energy romp through Melville's classic as we present the ballad of MOBY DICK.

Finger In The Pie was last seen at Greenwich Theatre with the five-star hit *Waiting For Stanley*.

★★★★★

"Hilariously funny... pure genius"

EDINBURGH GUIDE ON WAITING FOR STANLEY

★★★★★

"Not to be missed"

FRINGE REVIEW ON WAITING FOR STANLEY

TUE 17 – SAT 21
SEPTEMBER

Eves 7.30pm, Sat Mat 2.30pm

Tickets £15 (Concessions £10)

First night and matinee - all tickets £10



FINE CHISEL THEATRE PRESENTS

MIDNIGHT AT THE BOAR'S HEAD

Outside the land is burning. But in the bar, music is playing, drink is flowing and there are stories to be told.

The Boar's Head in London's Cheapside was Shakespeare's favourite pub. Fine Chisel bring it to life and fill it with an array of colourful characters in this foot-stomping romp, with live music and folk-fueled story-telling. Shakespeare has never been so much fun!

Fine Chisel Theatre are an exceptionally talented group of theatre-makers and outstanding musicians based in the South-East of England.

THU 19 – SAT 21 SEPTEMBER

Eves 9.15pm

Tickets £10

Free to Friends of Greenwich Theatre

MIDNIGHT IN THE BOAR'S HEAD is presented in the Greenwich Theatre Cafe/Bar following *Moby Dick* in the main house.
Book for both shows for just £17.50.

"Shakespearean
Cabaret...
Bawdy, raucous,
immersive
and at times
interactive,
it's the fun of
Shakespeare as
it should be."

THREE WEEKS

★★★★★

"Rollicking good music...
fine acting. Shakespeare's
humour is handled
beautifully."

EVENING STANDARD



WINNER OF A
THREE WEEKS
EDITOR'S AWARD,
EDINBURGH FESTIVALFRINGE 2012

GREENWICH
THEATRE LONDON

the Band Plays On

a festival of new
gay-themed playwriting

UNVEILING
AN EXCITING
NEW FESTIVAL
OF STAGED
READINGS OF
NEW GAY THEMED
PLAYWRITING.

TUE 24 SEPTEMBER

SAVING SOULS IN SOHO

BY MICHAEL ROSS
DIRECTED BY STUART SAINT

A darkly hilarious piece of new writing in which two men on a mission recount their glorious triumphs and recent struggles...

WED 25 SEPTEMBER HAPPY LIKE US

BY MATT HARRIS
DIRECTED BY PATRICK WILDE

A hard hitting drama about a young man's struggle to cope with life in a psychiatric facility, and the brutal act of catharsis demanded of him.

THU 26 SEPTEMBER THE REVELATION OF BOBBY PRITCHARD

BY RICH EPSEY
DIRECTED BY OLIVER JACK

"God, Guns and Gays" dominate political discussion in the American South, and this play humanizes this charged discourse. Is it possible to reconcile ostensibly irreconcilable beliefs about sexuality and religion?

FRI 27 SEPTEMBER

KEEPING UP WITH THE JOANS

BY PHILIP MEEKS
DIRECTED BY PATRICK WILDE AND OLIVER JACK

For years the Halfmoon Players performed "St Joan" with two revered members taking turns to play the martyr. Now, revisiting the past, Zillah and Kitty struggle to hang on to bitter-sweet memories of forbidden love.

SAT 28 SEPTEMBER RED LIGHT SOHO

BY PHIL SETREN
DIRECTED BY PHIL SETREN

A darkly comic thriller set against the backdrop of the current financial crisis, Red Light Soho was shortlisted for Manchester's 24.7 Theatre Festival in 2012.


Eves **7.30pm**

Tickets **£5**

Festival Pass - see all events for **£15**

FOR ONE NIGHT ONLY

TAIKO MEANTIME



Taiko Meantime strike at the heart of Taiko drumming's magic: an enthralling show combining traditional Japanese rhythms and techniques with eclectic, original compositions, enticing their audience to follow them on a musical journey. Their last visit sold out - book now to avoid disappointment!

SUN 29 SEPTEMBER

Eve **7.30pm**

Tickets **£15** (Concessions **£12.50**)

RUMPUS THEATRE COMPANY PRESENTS

THE GHOST SHIP!

A THRILLING NEW
PLAY BY DUNCAN
HANDS. BASED
ON THE STORY BY
JOSEPH CONRAD

"Rumpus guarantees to
set your heart racing!"

REMOTEGOAT

His tongue loosened by liquor in a seaside inn, Conrad tells his daughter and her fiancé the spine-chilling tale of a storm-battered ship, and of a ghost who comes to haunt all their dreams!

Rumpus Theatre Company returns to Greenwich Theatre after hit productions of *The Ghost's Touch* and *The Haunted Bride*.

**MON 30
SEPTEMBER**

Eve **7.30pm**

Tickets **£15** (Concessions **£12.50**)

THEATRE CENTRE PRESENTS

ADVICE FOR THE YOUNG AT HEART

BY ROY WILLIAMS

In the latest play from award-winning playwright Roy Williams, set in 2011 and 1958, London is rioting...

Candice is ordered by her gang-leading boyfriend to lure Clint into a honeytrap. Haunted by her grandfather's mistakes, she stands at a crossroads. Will she do as she's told, or will she learn to be true to herself before history repeats itself? This modern tale for riotous times spans three generations, exploring race, family and misguided loyalty.

BAFTA-winning Roy Williams' many plays include the widely acclaimed *Sucker Punch* (Olivier Award nomination for Best New Play 2010), *Absolute Beginners* (Lyric Hammersmith) and *Sing Yer Heart Out for the Lads* (National Theatre).

TUE 1 – THU 3 OCTOBER

Eves **7.30pm**, Wed & Thu Mat **1.30pm**

Tickets **£15** (Concessions **£10**)

Matinees, all tickets **£10**

READING BETWEEN THE LINES PRESENTS
A THRILLING MODERN RE-TELLING
OF SHAKESPEARE'S CLASSIC

ROMEO & JULIET

Verona. A powerful and romantic city until riots gutted the land of state-control. Now, two powerful families grapple for supremacy as their savage youngsters brawl for territory.

A bold, modern production with music by DJ & electronic composer Benjamin Hudson (Baconhead; Global tours, Radio 1, 6 Music, MTV).

The press on Reading Between The Lines:

★★★★★

"The production could not be faulted"

REMOTE GOAT

"Thrilling... a joy to watch"

BRITISH
THEATRE
GUIDE

FRI 4 & SAT 5 OCTOBER

Eves **7.30pm**, Sat Mat **2.30pm**

Tickets **£15** (Concessions **£12.50**)

KYLIE VILCINS FOR PAUL TAYLOR-MILLS LTD PRESENTS

BARE

THE ROCK MUSICAL

MUSIC BY DAMON INTRABARTOLO
LYRICS BY JOHN HARTMERE
BOOK BY INTRABARTOLO AND HARTMERE

★★★★

"A production which will pull the heart strings of most. In the final scenes, I couldn't hold back the tears and I wasn't the only one."

WHATSONSTAGE.COM

Following its sold-out European Premiere at the Union Theatre, cult musical BARE will transfer to Greenwich Theatre for a limited run this Autumn.

A contemporary rock musical, BARE tells the electrifying story of a group of students navigating their way through a journey of teenage self-discovery, wrestling with identity, sexuality, and religion at a co-ed Catholic boarding school. With a pulsating rock score, this is a powerful story of youth and rebellion you will never forget.



"superb presentation of a challenging musical... a vibrant, dynamic piece"

BROADWAY WORLD



★★★★

"...This defiant musical is a cult hit in the States, where it began as a rock opera in 2000. I don't know why it's taken so long to transfer here. There is so much passion and spark. Jon Hartmere's vibrant lyrics and Paul Taylor-Mills' inventive direction bring this energetic ensemble roaring into life...."

TIME OUT

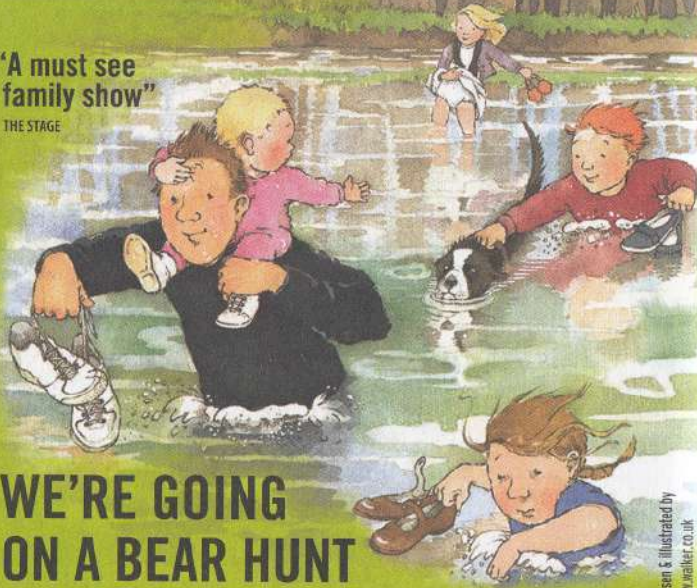
BARE was first staged at the Hudson Theatre in Los Angeles in 2000, before opening Off-Broadway at the American Theatre of Actors in 2004. It has since received over 100 productions in cities all over the world, returning to New York at New World Stages in 2012.

BARE is directed by Paul Taylor-Mills, whose credits include *Little Shop of Horrors*, (nominated for 4 Off West End Awards including Best Director) and *Rent* (Greenwich Theatre, Winner, Best Regional Production, BroadwayWorld Awards).

WED 9 – SUN 27 OCTOBER

Tue - Sun Eves **7.30pm** Sun Mats **2.30pm**
Tickets **£20, £17.50** (Concessions **£15**)

"A must see family show"
THE STAGE



WE'RE GOING ON A BEAR HUNT

A LITTLE ANGEL PRODUCTION
BASED ON THE BOOK WRITTEN BY MICHAEL ROSEN

We're going on a bear hunt. What a beautiful day!
We're going to catch a big one. We're not scared.



TIME OUT

A family go on an expedition of a lifetime – running down the grassy bank, wading through the cold river, squelching over the oozy mud, stumbling into the dark forest, then peering into a cave... what will they find?

Little Angel Theatre brings Michael Rosen's thrilling and funny adventure to life in a brand new puppetry production directed by Little Angel Theatre's Artistic Director Peter Glanville and with music and lyrics by renowned singer-songwriter Barb Jungr.

WED 30 OCTOBER – SUN 3 NOVEMBER

Wed - Fri **11am & 2pm**

Sat & Sun **10am, 12.30pm & 3pm**

Tickets **£12.50** (Children and concessions **£7.50**)

Family ticket (four people) **£35** Suitable for ages 2+



Illustration © 1989 Helen Oxenbury From 'WE'RE GOING ON A BEAR HUNT' by Michael Rosen & illustrated by Helen Oxenbury. Reproduced by permission of Walker Books Ltd, London SE11 5JU www.walker.co.uk

GREENWICH COMEDY FESTIVAL 2013

The hugely popular Greenwich Comedy Festival brings you an exclusive weekend of laughter, as part of the Royal Greenwich Festivals, this November!

Welcome in the winter with a wealth of shows starring the UK's finest comedians performing in Greenwich Theatre, Up The Creek Comedy Club and more unique venues across the Borough.

Plus look out for fabulous fringe and free activities for audiences old and young, comedy workshops, funny film screenings and a whole lot more. To find out what's in store visit www.greenwichcomedyfestival.co.uk



SATURDAY 2ND NOVEMBER

'TOP QUALITY COMEDY FOR CHILDREN, THEIR PARENTS AND ANYBODY WHO LIKES HUMOUR WITHOUT THE RUDE WORDS.'
TIME OUT

'THE PERFECT WAY TO ENTERTAIN THE WHOLE FAMILY.'
THREE WEEKS



Otter-ly fantastic! The wildly acclaimed Comedy Club 4 Kids returns this half term as part of **Greenwich Comedy Festival 2013**. Cracking entertainment for everyone over the age of six, it stars the best comedians on the UK and International circuit doing what they do best... But without the rude bits!

Saturday 2nd Nov. Greenwich Theatre. Show 6pm. Tickets: £7 (Adult). £5 (Child) Ages 6+

'Splenetic and splendid'



GUARDIAN

ALEXEI SAYLE

'Fearlessly funny... thrills and surprises at every turn.'



METRO

The godfather of alternative comedy in his first full-length stand-up show in 17 years following two sold-out London seasons.

'Back on the stand-up stage for the first time in 16 years, his comic control remains something rare and wonderful.'

THE TIMES

SUN 3 NOVEMBER

Eve 8pm

Tickets **£17.50** (Concessions **£12.50**)

Suitable for ages 15+

THE RIVER PEOPLE AND GREENWICH THEATRE PRESENT

RUMCULLS AND A SHANTY CABARET RAGWATER

*"In the arms of the dock
Where the lonely shore
Meets the wanton tide
The Gallows Glare
Awaits you there
With one last cup for thee"*

THU 31 OCTOBER

7.30pm All Tickets **£10**

Venue: Battersea Barge,
Nine Elms Lane, London SW8 5BP

Further dates/venues to be announced.
Check www.greenwichtheatre.org.uk for details



A dark and sumptuous shanty cabaret treat for your eyes and ears - come celebrate the most wicked night of the year with The River People, on The Battersea Barge.

Shakespeare Schools Festival

Greenwich Theatre is delighted to welcome the UK's largest Youth Drama Festival to our stage.

The Shakespeare Schools Festival works with 1,000, Primary, Secondary and Special schools all over the UK, making it possible for them to stage abridged Shakespeare productions in their local professional theatre. Each night four schools will perform four different Shakespeare plays. Come and celebrate their achievements in a wonderful evening of entertainment.

"Every child in every school ought to have the chance to experience this magical process"

PHILIP PULLMAN, SSF PATRON

MON 4 - SAT 9 NOVEMBER

Eves 7pm

Tickets **£8.50** (Concessions **£6.50**)

Details of participating schools and their performance day can be obtained from the Box Office.

GREENWICH THEATRE PROUDLY PRESENTS

PUSS in BOOTS

WRITTEN AND DIRECTED BY ANDREW POLLARD
MUSICAL DIRECTOR STEVE MARKWICK
DESIGNER CLEO PETTITT, LIGHTING DESIGNER CHRIS WITHERS

Andrew Pollard returns to Greenwich Theatre for another all-singing, all-dancing pantomime treat. With last year's production of Robin Hood breaking all box office records, early booking for this year's production of PUSS IN BOOTS is advised. Don't miss out on one of the capital's favourite Christmas shows!

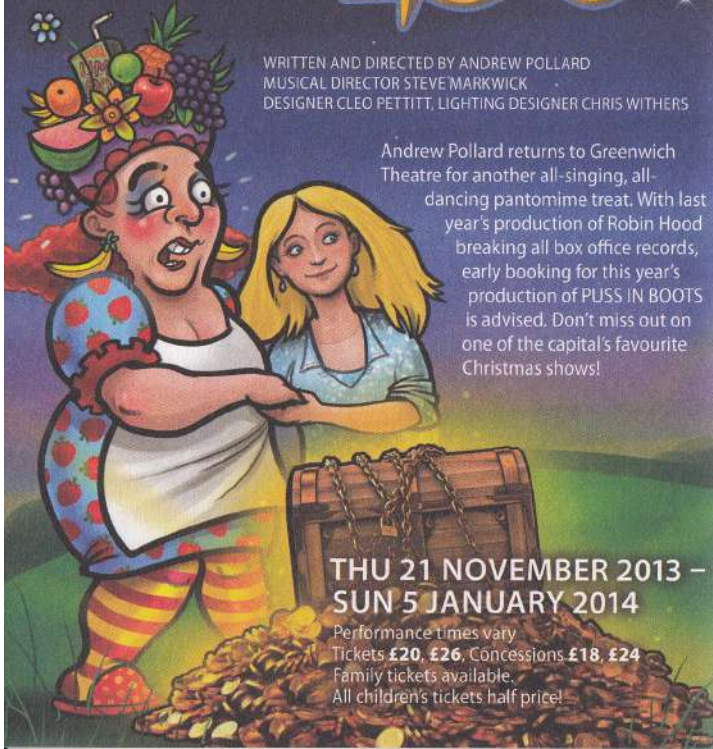
THU 21 NOVEMBER 2013 –
SUN 5 JANUARY 2014

Performance times vary
Tickets £20, £26, Concessions £18, £24
Family tickets available.
All children's tickets half price!

"one of the
best pantomimes
in the country...
more enjoyable
than Christmas
Day itself"

BRITISH THEATRE GUIDE,
2011-12

**BOOK
NOW!**
ALL CHILDREN'S
TICKETS HALF
PRICE!



VED • GET INVOLVED • GET INVOLVED • GET INVOLVED • GET INVOLVED • GET INVOLVED • GE



LIFE A SIX WEEK PUPPETRY COURSE FOR ADULTS

Over this six week course various puppetry styles will be explored, puppets will be made and participants will be given tools to apply to any inanimate object or puppet to bring it to life. After two sell out courses in 2012 and 2013, puppeteer and performer Claire Harvey (The Little Angel, The River People) returns to lead sessions in all elements of puppetry, from making to operating to devising, culminating in a workshop sharing in the final session.

Every Monday from 7 Oct to 18 Nov (not 28 Oct)

Time: 6pm - 7.30pm

Price: Course fee £75 Concessions £60

This season we also launch LIFE: MANIPULATE, a new group for those who have some experience of puppetry or who have completed the LIFE course already. Visit www.greenwichtheatre.org.uk for details.

FILAMENT CHORAL WORKSHOP A SIX WEEK COURSE FOR ADULTS

Are you a singer or actor with experience of harmony singing?
Want to develop this area of your work?

Join Filament's composer and choral leader Osnat Schmool and director Sabina Netherclift at Greenwich Theatre this autumn to explore the relationship between choral singing and physical improvisation. Meeting once a week over 6 weeks, you will develop your individual skills in creating melody, rhythm and harmony whilst also working with others to create unique choral storytelling theatre.

Every Monday from 7 Oct to 18 Nov (not 28 Oct)

Time: 6pm - 7.30pm

Price: Course fee £75 Concessions £60



MONTAGE THEATRE ARTS AND GREENWICH THEATRE PRESENTS

MONTAGE THEATRE ARTS

DRAMA MOVEMENT DANCE

PERFORMANCE COURSES FOR OLDER PEOPLE

Beginners – led by Anna Brown

No experience necessary, just commitment to a challenging and inspiring course enjoying techniques and skills of performance.

Every Thursday from Sep 12 – Dec 5 (not Oct 24, 31)

1.30pm - 3pm; £5 per session

Intermediate – led by Judy Gordon

Ideal for previous Drama Movement Dance participants, or those with some experience of performance.

Course 1. Bringing text to performance

Using a range of texts from poetry to plays, we will explore the technique and skills needed to present texts with an emotional depth required for theatre.

Every Thursday from Sep 12 – Oct 17

10.30am - 12.30pm; £7 per session

Course 2. Devising from text to performance

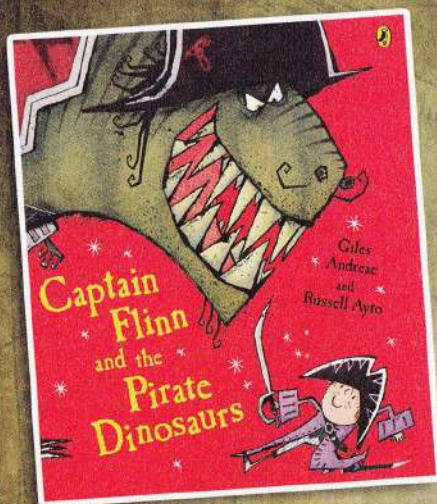
Using a short story or play, we will bring the text to the stage using physical theatre techniques and exploring the emotional journey of the work.

Every Thursday from Nov 7 – Dec 12

10.30am - 12.30pm; £7 per session



LES PETITS, GREENWICH THEATRE AND UNDERBELLY PRODUCTIONS PRESENT



★★★★★
"Shiver me timbers! Here's a show for kids with lots of heart... likely to send the kids - anyone from ages 0-10 - into fits of giggles."

TIME OUT

BASED ON THE AWARD WINNING BOOK BY GILES ANDREAЕ AND RUSSELL AYTO

Join Flinn at the London Wonderground as he discovers a Pirate hiding in a cupboard, hold on tight as together we tumble into a real life adventure! All aboard for a non-stop action packed theatrical experience with live music, puppetry, physical performance and dastardly dinosaurs!

★★★★★
"high production values, impressive costumes and puppets... this show really has it all for the whole family"

EDINBURGH SPOTLIGHT

WED 28 AUGUST – SUN 8 SEPTEMBER

Weekdays **4pm**, Weekends **5pm**, No performance **Wed 4 Sep**
Tickets **£10** (Wonder seats **£15**)

Venue: London Wonderground at the Southbank Centre, Jubilee Gardens, off Belvedere Road, London SE1 8XX

Bookings: www.londonwonderground.co.uk or 0844 545 8282

FRIENDS OF GREENWICH THEATRE

There has never been a better time to show your support for Greenwich Theatre. The last two years have been the most critical, tough and dynamic that the theatre has ever known. In that time we have done more, produced more and entertained more than ever before. Ours is a true success story - and by becoming a Friend of the theatre you can become a part of that story. This year we are offering an entirely new Friends Membership package.

For a donation of £40 we will give you:

- A 50% discount rate on tickets to any* of our shows for a year
- FREE tickets to selected shows throughout the year - this season Friends can claim up to 4 tickets each to *Midnight At The Boar's Head*
- Priority Booking for high demand productions and events
- A Welcome Pack containing a Greenwich Theatre Photobook celebrating

Join at our website www.greenwichtheatre.org.uk

Or contact the Box Office on 020 8858 7755

*Occasionally we sell tickets on behalf of other companies for special events, we can't guarantee access to these tickets - but we will try!

Pre or Post Theatre at Rivington Grill

For just **£16.50**
enjoy one of four mains and a glass of wine or beer*

RIVINGTON GRILL

178 Greenwich High Road, London SE10 8NN
020 8293 9270 | www.rivingtongreenwich.co.uk

*Terms and conditions apply, for more details visit:
www.rivingtongreenwich.co.uk/greenwich-theatre-offer

CALENDAR

AUGUST

Tue 27 7.30pm TRACK 3
 Wed 28 4pm CAPTAIN FLINN
 7.30pm TRACK 3
 Thu 29 4pm CAPTAIN FLINN
 7.30pm TRACK 3
 Fri 30 4pm CAPTAIN FLINN
 7.30pm TRACK 3
 Sat 31 5pm CAPTAIN FLINN
 2.30pm TRACK 3
 7.30pm TRACK 3

SEPTEMBER

Sun 1 5pm CAPTAIN FLINN *
 Mon 2 4pm CAPTAIN FLINN *
 Tue 3 4pm CAPTAIN FLINN *
 7.30pm SAM ROSE
 Wed 4 7.30pm SAM ROSE
 Thu 5 4pm CAPTAIN FLINN *
 7.30pm SAM ROSE
 Fri 6 4pm CAPTAIN FLINN *
 7.30pm SAM ROSE
 Sat 7 2.30pm SAM ROSE
 5pm CAPTAIN FLINN *
 7.30pm SAM ROSE
 Sun 8 5pm CAPTAIN FLINN *
 8pm BABYLON
 Tue 10 7.30pm SINCERELY MR TOAD
 8.30pm ROOST *
 Wed 11 7.30pm SINCERELY MR TOAD
 8.30pm ROOST *
 Thu 12 7.30pm SINCERELY MR TOAD
 8.30pm ROOST *
 Fri 13 7.30pm SINCERELY MR TOAD
 8.30pm ROOST *
 Sat 14 2.30pm SINCERELY MR TOAD
 7.30pm SINCERELY MR TOAD
 8.30pm ROOST *
 Sun 15 8.30pm ROOST *
 Tue 17 7.30pm MOBY DICK
 Wed 18 7.30pm MOBY DICK
 Thu 19 7.30pm MOBY DICK
 9.15pm MIDNIGHT AT THE BOAR'S HEAD
 Fri 20 7.30pm MOBY DICK
 9.15pm MIDNIGHT AT THE BOAR'S HEAD
 Sat 21 2.30pm MOBY DICK
 7.30pm MOBY DICK
 9.15pm MIDNIGHT AT THE BOAR'S HEAD

Tue 24 7.30pm THE BAND PLAYS ON
 Wed 25 7.30pm THE BAND PLAYS ON
 Thu 26 7.30pm THE BAND PLAYS ON
 Fri 27 7.30pm THE BAND PLAYS ON
 Sat 28 7.30pm THE BAND PLAYS ON
 Sun 29 7.30pm TAIKO MEANTIME
 Mon 30 7.30pm THE GHOST SHIP

OCTOBER

Tue 1 7.30pm ADVICE FOR THE YOUNG AT HEART
 Wed 2 1.30pm ADVICE FOR THE YOUNG AT HEART
 7.30pm ADVICE FOR THE YOUNG AT HEART
 Thu 3 1.30pm ADVICE FOR THE YOUNG AT HEART
 7.30pm ADVICE FOR THE YOUNG AT HEART
 Fri 4 7.30pm ROMEO AND JULIET
 Sat 5 2.30pm ROMEO AND JULIET
 7.30pm ROMEO AND JULIET
 Wed 9 7.30pm BARE
 Thu 10 7.30pm BARE
 Fri 11 7.30pm BARE
 Sat 12 7.30pm BARE
 Sun 13 2.30pm BARE
 7.30pm BARE
 Tue 15 7.30pm BARE
 Wed 16 7.30pm BARE
 Thu 17 7.30pm BARE
 Fri 18 7.30pm BARE
 Sat 19 7.30pm BARE
 Sun 20 2.30pm BARE
 7.30pm BARE
 Tue 22 7.30pm BARE
 Wed 23 7.30pm BARE
 Thu 24 7.30pm BARE
 Fri 25 7.30pm BARE
 Sat 26 7.30pm BARE
 Sun 27 2.30pm BARE
 7.30pm BARE

* London Wonder-ground at the Southbank Centre, Jubilee Gardens, off Belvedere Road, London, SE1 8XX
 * Oxleas Meadow, Shooters Hill, London SE18 3JA
 * Battersea Barge, Nine Elms Lane, London SW8 5BP

Wed 30 11am WE'RE GOING ON A BEAR HUNT
 2pm WE'RE GOING ON A BEAR HUNT
 Thu 31 11am WE'RE GOING ON A BEAR HUNT
 2pm WE'RE GOING ON A BEAR HUNT
 7.30pm RUMCULLS AND RAGWATER *

CALENDAR

NOVEMBER

Fri 1 11am WE'RE GOING ON A BEAR HUNT
 2pm WE'RE GOING ON A BEAR HUNT
 Sat 2 10am WE'RE GOING ON A BEAR HUNT
 12.30pm WE'RE GOING ON A BEAR HUNT
 3pm WE'RE GOING ON A BEAR HUNT
 Sun 3 10am WE'RE GOING ON A BEAR HUNT
 12.30pm WE'RE GOING ON A BEAR HUNT
 3pm WE'RE GOING ON A BEAR HUNT
 8pm ALEXEI SAYLE
 Mon 4 7pm SHAKESPEARE SCHOOLS FESTIVAL
 Tue 5 7pm SHAKESPEARE SCHOOLS FESTIVAL
 Wed 6 7pm SHAKESPEARE SCHOOLS FESTIVAL
 Thu 7 7pm SHAKESPEARE SCHOOLS FESTIVAL
 Fri 8 7pm SHAKESPEARE SCHOOLS FESTIVAL
 Sat 9 7pm SHAKESPEARE SCHOOLS FESTIVAL
 Thu 21 10am PUSS IN BOOTS
 Fri 22 10am PUSS IN BOOTS
 7pm PUSS IN BOOTS
 Sat 23 2pm PUSS IN BOOTS
 7pm PUSS IN BOOTS
 Tue 26 10am PUSS IN BOOTS
 Wed 27 10am PUSS IN BOOTS
 Thu 28 10am PUSS IN BOOTS
 7pm PUSS IN BOOTS
 Fri 29 7pm PUSS IN BOOTS
 Sat 30 2pm PUSS IN BOOTS
 7pm PUSS IN BOOTS

DECEMBER

Sun 1 1pm PUSS IN BOOTS
 5pm PUSS IN BOOTS
 Tue 3 10am PUSS IN BOOTS
 Wed 4 10am PUSS IN BOOTS
 1.30pm PUSS IN BOOTS
 Thu 5 10am PUSS IN BOOTS
 1.30pm PUSS IN BOOTS
 Fri 6 1.30pm PUSS IN BOOTS
 7pm PUSS IN BOOTS
 Sat 7 2pm PUSS IN BOOTS
 7pm PUSS IN BOOTS
 Sun 8 1pm PUSS IN BOOTS
 5pm PUSS IN BOOTS

Tue 10 10am PUSS IN BOOTS
 Wed 11 10am PUSS IN BOOTS
 1.30pm PUSS IN BOOTS
 Thu 12 10am PUSS IN BOOTS
 1.30pm PUSS IN BOOTS
 Fri 13 1.30pm PUSS IN BOOTS
 7pm PUSS IN BOOTS
 Sat 14 2pm PUSS IN BOOTS
 7pm PUSS IN BOOTS
 Sun 15 1pm PUSS IN BOOTS
 5pm PUSS IN BOOTS

Tue 17 2pm PUSS IN BOOTS
 7pm PUSS IN BOOTS
 Wed 18 2pm PUSS IN BOOTS
 7pm PUSS IN BOOTS
 Thu 19 2pm PUSS IN BOOTS
 7pm PUSS IN BOOTS
 Fri 20 2pm PUSS IN BOOTS
 7pm PUSS IN BOOTS
 Sat 21 2pm PUSS IN BOOTS
 7pm PUSS IN BOOTS
 Sun 22 1pm PUSS IN BOOTS
 5pm PUSS IN BOOTS

Tue 24 2pm PUSS IN BOOTS
 7pm PUSS IN BOOTS
 Wed 25 No Performance
 Thu 26 2pm PUSS IN BOOTS
 7pm PUSS IN BOOTS
 Fri 27 1pm PUSS IN BOOTS
 5pm PUSS IN BOOTS
 Sat 28 1pm PUSS IN BOOTS
 5pm PUSS IN BOOTS
 Sun 29 1pm PUSS IN BOOTS
 5pm PUSS IN BOOTS

Tue 31 1pm PUSS IN BOOTS
 5pm PUSS IN BOOTS

JANUARY

Wed 1 7pm PUSS IN BOOTS
 Thu 2 2pm PUSS IN BOOTS
 7pm PUSS IN BOOTS
 Fri 3 2pm PUSS IN BOOTS
 7pm PUSS IN BOOTS
 Sat 4 2pm PUSS IN BOOTS
 7pm PUSS IN BOOTS
 Sun 5 1pm PUSS IN BOOTS
 5pm PUSS IN BOOTS