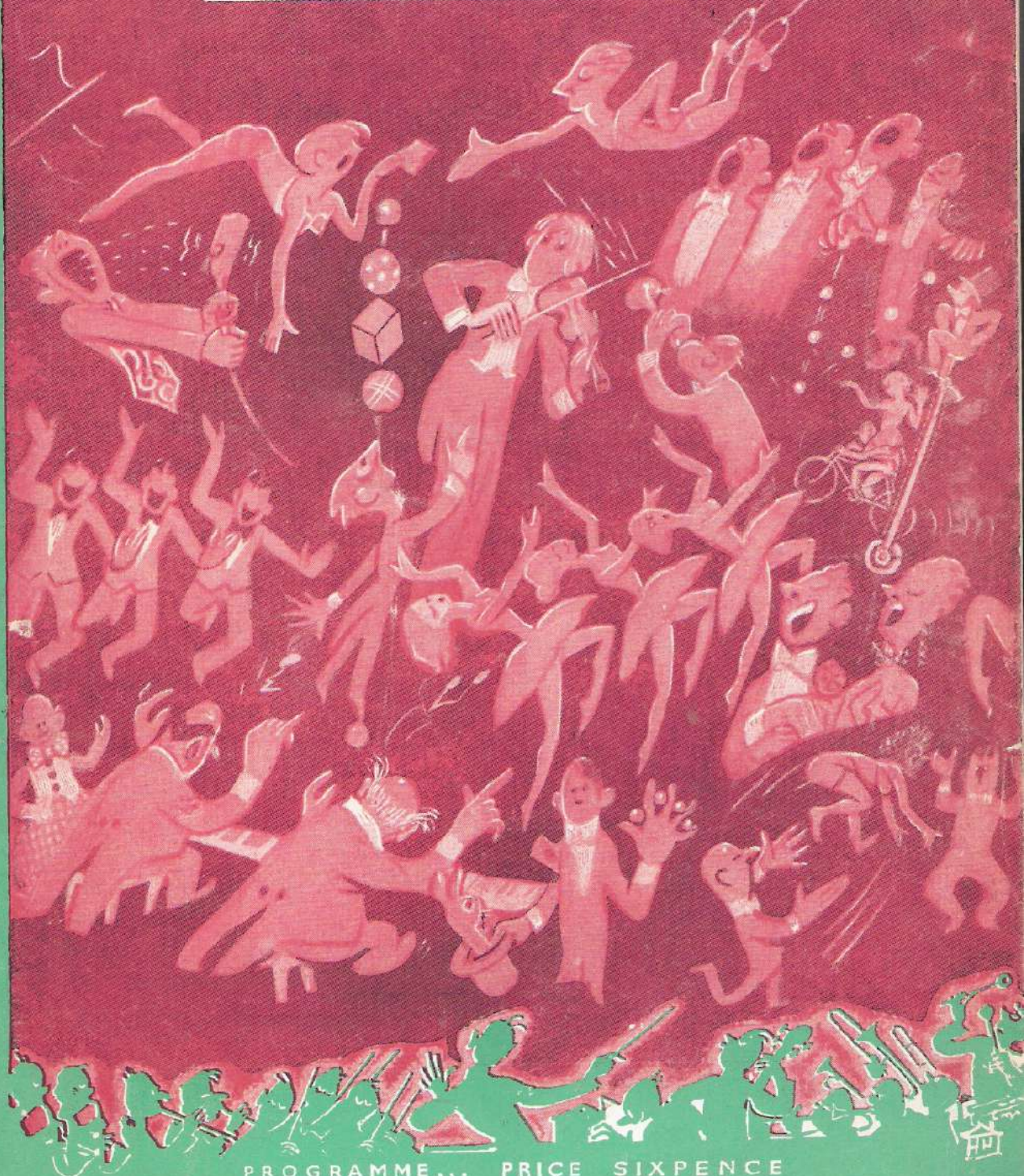


*The Famous* LONDON  
**PALLADIUM**

ACE VARIETY THEATRE OF THE WORLD

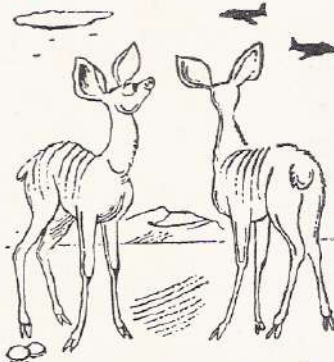


PROGRAMME... PRICE SIXPENCE





— Could a Kudu fly  
 — Could who?  
 — A Kudu  
 — Of course—by Safari.  
 A wonderful service to U.K.  
 and the fare is pounds  
 cheaper



*Fly* **SAFARI**  
 (COLONIAL) COACH CLASS SERVICES

**U.K. to RHODESIA**

London to Salisbury, Rhodesia:  
 Weekly service

Single £115 Return £207

**U.K. to EAST AFRICA**

London to Nairobi:  
 Twice Weekly

Single £97 Return £175



Operated by: AIRWORK LTD., 15 Chesterfield St., London, W.1 • Tel: Grosvenor 4881  
 LONDON AIR TERMINAL, 249 Brompton Road, S.W.3.

**DINAH LEE**

*Exclusive Dress Salon*

**275 KENSINGTON HIGH ST., W.8**

(6 Doors from the Odeon Cinema)

A Fine Selection of . . . . .  
**MODEL SUITS, COATS, DRESSES AND  
 SHOES FROM THE FILM STUDIOS  
 AT WELL BELOW ORIGINAL COST**

**Exquisite Evening Gowns for Sale and Hire  
 Model Clothes Purchased**

**WESTERN  
 7030/7024**



*A typical crowd outside  
 the London Palladium*





Under the Direction of Val Parnell

Artists Booking Control	...	CISSIE WILLIAMS
Chief of Production Department	CHARLES HENRY	Musical Director ... ERIC ROGERS
Area Supervisor	... E. E. BRICKNELL	Stage Director ... JACK MATTHEWS
Resident Manager	... GEORGE MARGRAVE	Press Representative JOHN A. CARLSEN

6.15 TWICE NIGHTLY 8.45      MATINEE: SATURDAY  
 EACH WEEK at 2.40

— NEXT ATTRACTION, APRIL 30th TWO WEEKS —

**INTERNATIONAL  
 RECORD STARS**

- BILLY DANIELS ★
- TEDDY JOHNSON ★
- JONES & ARNOLD ★
- DENNIS LOTIS ★
- CINQ PERES ★
- THE NITWITS ★
- ★ EVE BOSWELL
- ★ PEARL CARR
- ★ 3 KAYE SISTERS
- ★ LITA ROZA
- ★ TOMMY TRINDER

AND YOUR  
 RESIDENT COMPERE



STARS WHO HAVE APPEARED AT THE LONDON PALLADIUM

WINIFRED ATWELL



JACK & BENNY



HOAGY CARMICHAEL



BUD & LOU ABBOTT COSTELLO



MAX BYGRAVES



"80 Dishes to choose from" AT

**VERREY'S**  
THE RESTAURANT OF GOOD TASTE!

LUNCH DINNER 12/6 or a la carte

**OPEN TILL MIDNIGHT**  
FULLY LICENSED

**233, REGENT STREET, W.1**

(1 minute from this theatre) REGent 4495

Ample Parking Facilities

Pre-theatre meals served in the Long Bar and Buttery from 5.30 p.m.

LET'S ALL GO TO VERREY'S



CARL BRISSON



JEAN CARROLL



DONALD O'CONNOR

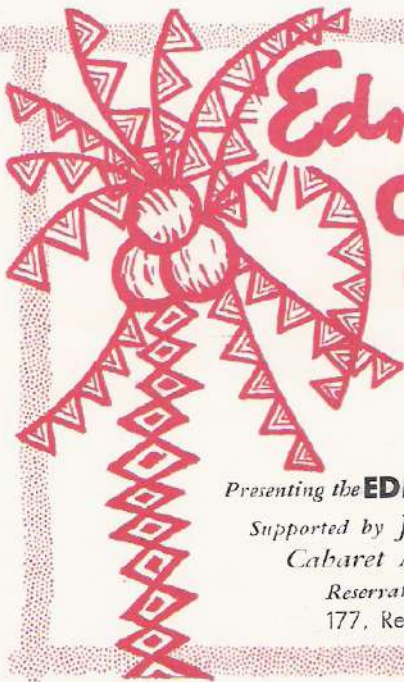


NAT KING COLE



NORMAN WISDOM

TEA  
COFFEE  
AND  
SNACK  
BAR  
in the  
STALLS  
PALM  
COURT  
LOUNGE



**Edmundo Ros**  
welcomes you to his  
**COCONUT GROVE**

and invites you to enjoy your  
COCKTAILS,  
DINNER & DANCING  
from 8.30 p.m. every evening

Presenting the **EDMUNDO ROS ORCHESTRA**  
Supported by Jack Nathan and his Music  
Cabaret Attractions at 12.30 a.m.

Reservations REGent 7675, 2640  
177, Regent Street, London, W.1.







BETTY & JANE KEAN

FLORENCE DESMOND



DUKE ELLINGTON



TENNESSEE ERNIE



STARS WHO HAVE APPEARED AT THE LONDON PALLADIUM

## Why be a weight lifter?

In grandmother's day they believed that the heavier the iron the better the ironing would be. Morphy-Richards did a lot to break that idea, as your present iron probably proves. And now Morphy-Richards go one better with the 'Atlantic' Lightweight Electric Iron. It weighs only 2½ lbs. and does your ironing perfectly. The whole secret is in controlled, correct heat—evenly distributed all the time over the entire soleplate. No need now to talk of a heavy ironing day. The Morphy-Richards 'Atlantic' makes lightweight work of it.



*The iron with the butterfly touch*

'Lifetime' element is completely embedded in the light-alloy soleplate. Easily read fabric selector dial. Reversible flex entry for right or left hand users. No radio or T.V. interference. Comfort grip handle. 7½ ft. non-kink flex. Body in elegant chrome or delightful pastel shades—primrose, green or blue. All voltages AC or AC/DC.



FROM  
**48'1**  
to 60'10

The  
**MORPHY-RICHARDS**

*Atlantic*

LIGHTWEIGHT ELECTRIC IRON



BILLY COTTON



JIMMY DURANTE



BILLY DANIELS



THE INKSPOTS



NORMAN EVANS



EDDIE FISHER



SID FIELD



THE ANDREWS SISTERS



STARS  
WHO HAVE  
APPEARED  
AT THE  
LONDON  
PALLADIUM

# THE LONDON P

MONDAY, APRIL 16th, 1956 FOR TWO WEEKS

1. LONDON PALLADIUM ORCHESTRA  
under the Direction of ERIC ROGERS

2. THE GEORGE CARDEN DANCERS

3. **TOMMY TRINDER**  
INTRODUCES THE PROGRAMME

4. EVIE & JOE SLACK *Acrobatic Fun*

FIRST TIME HERE

5. KING BROTHERS *TV's Teenage Stars*

FIRST TIME HERE

6. RICHIARDI *The International Wizard*

7. HARRY WORTH *Figure of Speech*

8. NICHOLAS BROTHERS  
*High Speed Dancers*

INTERMISSION

THE LONDON PALLADIUM occupies the site of the former residences of the Duke of Argyll and Earl of Aberdeen.

In 1871-86, the reconstructed building housed the famous Hengler's Circus.

The present building completed in 1910 and named The London Palladium played the great music names of the day. Later became a cinema but reverted to variety theatre in September, 1928.

The present purpose of the theatre is a mode of presentation inaugurated in March 1948, has firmly established the London Palladium as the World's No. 1 Music Hall.



GRACIE  
FIELDS



JUDY  
GARLAND



PHIL  
HARRIS



BETTY  
HUTTON



GEORGE  
& BERT  
BERNARD



BOB  
HOPE



LENA  
HORNE



SONNIE  
HALE



THE PALLADIUM  
as it was in the days of  
HENGLERS CIRCUS



# PALLADIUM

STARS WHO HAVE APPEARED AT THE LONDON PALLADIUM

## PROGRAMME—(Continued)

LONDON  
The Palladium occupies the site of the former Palace of the Duke of Argyll and Aberdeen.

1871-86, the present building was erected on the site of the famous Royal Circus.

The present building was erected in 1910 and 1911.

The London Palladium has played all the part of a great music hall of the day. It has become a cinema theatre in December, 1928.

The present policy of the theatre and of its presentation of plays has been firmly established. The London Palladium is now the World's No. 1 Music Hall.

9. THE GEORGE CARDEN DANCERS

10. LES CURIBAS

*Adagio Team*

11.

FIRST TIME HERE

# HOWARD KEEL



The Famous M.G.M. Singing Star

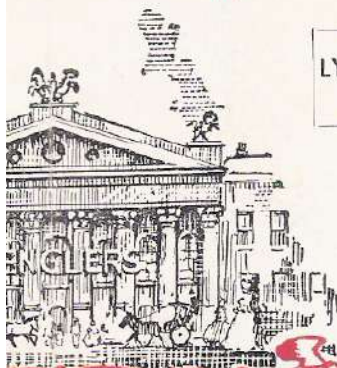
The Management tender grateful thanks to Mr. Jack Hylton for his permission for Howard Keel to sing "Stranger in Paradise" from the Musical Play "Kismet" currently at the Stoll Theatre.

First Aid Facilities in this Theatre are provided by British Red Cross members who give their services Free

PLEASE NOTE—PHOTOGRAPHING IN THIS THEATRE IS FORBIDDEN  
CARDEN DANCERS' COSTUMES BY R. ST. JOHN ROPER & M. BERMAN  
NYLON STOCKINGS BY KAYSER BONDOR

ON SALE IN THE AUDITORIUM  
LYONS DELICIOUS ICE CREAM, NEW ORANGEADE "PEGGY"  
and WELL-KNOWN BRANDS OF CHOCOLATES

FULLY LICENSED BARS IN ALL PARTS OF THE THEATRE  
Snacks, Teas and Coffee served in the Palm Court also Upper Circle Bar  
SMOKING PERMITTED



PALLADIUM  
in the days of  
GLENN'S CIRCUS

VERA LYNN

DOROTHY LAMOUR

GUYE GUYE LEE

JIMMY JEWEL AND BEN WARRISS



MA PASTRY  
(RICHARD HEARNE)



FRANKIE HOWARD



DANNY KAYE



FRANKIE LAINE





# The Luxurious Upper Circle

ALL  
TIP-UP  
SEATS  
BOOKABLE  
IN  
ADVANCE

FULLY  
LICENSED  
BAR  
*also*  
TEA & COFFEE  
COUNTER

Hear your  
favourite stars on...



L.P. (33½ R.P.M.), 45 R.P.M. and 78 R.P.M. RECORDS

THE DECCA RECORD COMPANY LIMITED,  
1-3 BRIXTON ROAD, LONDON, S.W.9







IN ACTIVE PREPARATION FOR  
PRODUCTION AT THIS THEATRE

Opening MAY 17th

VAL PARNELL & BERNARD DELFONT

present

THE 1956  
PALLADIUM  
BIG SHOW



WITH

HARRY SECOMBE  
WINIFRED ATWELL

ALMA COGAN

BERYL REID

AND TERRIFIC CAST

- ★ NEW FEATURES
- ★ LAVISHLY STAGED
- ★ ROCKING WITH LAUGHTER

BOOKING NOW OPEN

in accordance with the requirements of the London County Council.  
1.—The public may leave at the end of the performance or exhibition by all exit doors and such doors must at that time be open. 2.—All gangways, corridors, staircases and external passage ways intended for exit shall be kept entirely free from obstruction whether permanent or temporary. 3.—Persons shall not be permitted to stand or sit in any of the gangways intersecting the seating or to sit in any of the other gangways. If standing be permitted in the gangways at the sides and the rear of the seating, it shall be limited to the numbers indicated in the notices exhibited in those positions. 4.—The safety curtain must be lowered and raised in the presence of each audience.



STARS  
WHO HAVE  
APPEARED  
AT THE  
LONDON  
PALLADIUM



MAX  
MILLER



AL  
MARTINO



DONALD  
PEERS



MARTHA  
RAYE

Try a 'TONIC'  
and ask for  
SCHWEPPE'S



*Adults sometimes add gin*

SCHWEPPEVERESCENCE LASTS THE WHOLE DRINK THROUGH



PINKY  
LEE



CARMEN  
MIRANDA



TONY  
MARTIN



GUY  
MITCHELL



DEEP RIVER  
BOYS



JOHNNY  
RAY



JO  
STAFFORD



RED  
SKELTON

... FOR A "TONIC"  
*at the Theatre and at home!*



Choose  
**BOOTH'S**  
DRY GIN



BY APPOINTMENT  
TO HER MAJESTY THE QUEEN  
GIN DISTILLERS  
BOOTH'S DISTILLERIES LIMITED

NUMBER ONE  
DRESSING  
ROOM

WHERE THE STARS PREPARE







DANNY THOMAS

STARS WHO HAVE APPEARED AT THE LONDON PALLADIUM

The OLD HOLBORN BAR AT REAR OF GRAND CIRCLE

"George—George please ring up . . . . Hong Kong Restaurant GERrard 6847 . . . . for a table— I want everything Chinese to-night."



TERRY THOMAS



FRANK SINATRA



SOPHIE TUCKER

HONG KONG RESTAURANT

58-60 SHAFTESBURY AVENUE, W.1.



KAY STARR

SUMMER SONG

DAVID HUGHES and SALLY ANN HOWES with Bonita Primrose, Edric Connor, Laurence Naismith and Van Atkins (Original Cast) BBL 7070

ThePAJAMA GAME

JOHN RAITT, JANIS PAIGE, EDDIE FOY, Jr. (Original Broadway Cast) BBL 7050

KISMET

ALFRED DRAKE, DORETTA MORROW Joan Diener, Henry Calvin, and Richard Kiley (Original Broadway Cast) BBL 7023



DINAH SHORE



Long Playing Records

PHILIPS ELECTRICAL LIMITED, GRAMOPHONE RECORDS DIVISION, 179-185, GREAT PORTLAND STREET, LONDON W.1



TOMMY TRINDER

The TUDOR BAR AT REAR OF STALLS

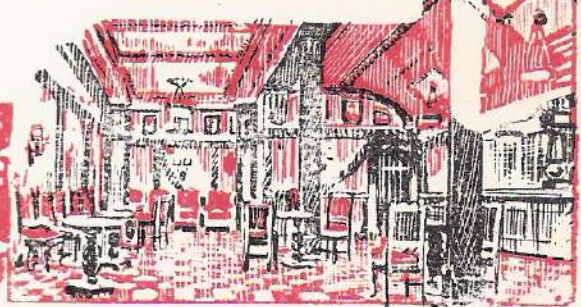


DEAN MARTIN & JERRY LEWIS



LES PAUL

MARY FORD







*Singing Star  
of M-G-M films*

**HOWARD KEEL**



*Hear him on*

**M-G-M**

*Records*

TRADE MARK OF LOEW'S INC.  
MADE IN GREAT BRITAIN BY E.M.I. LTD.

E.M.I. LTD. (RECORD DIVISION) 8-11, GREAT CASTLE STREET, LONDON, W.1

*Advertisements by STILWELL, DARBY & Co. Ltd. (Advertising Contractors)  
24 Old Burlington Street, W.1 (Tel. Grosvenor 7481/5) Printed by TRIBE BROS. Ltd., London, N.1*