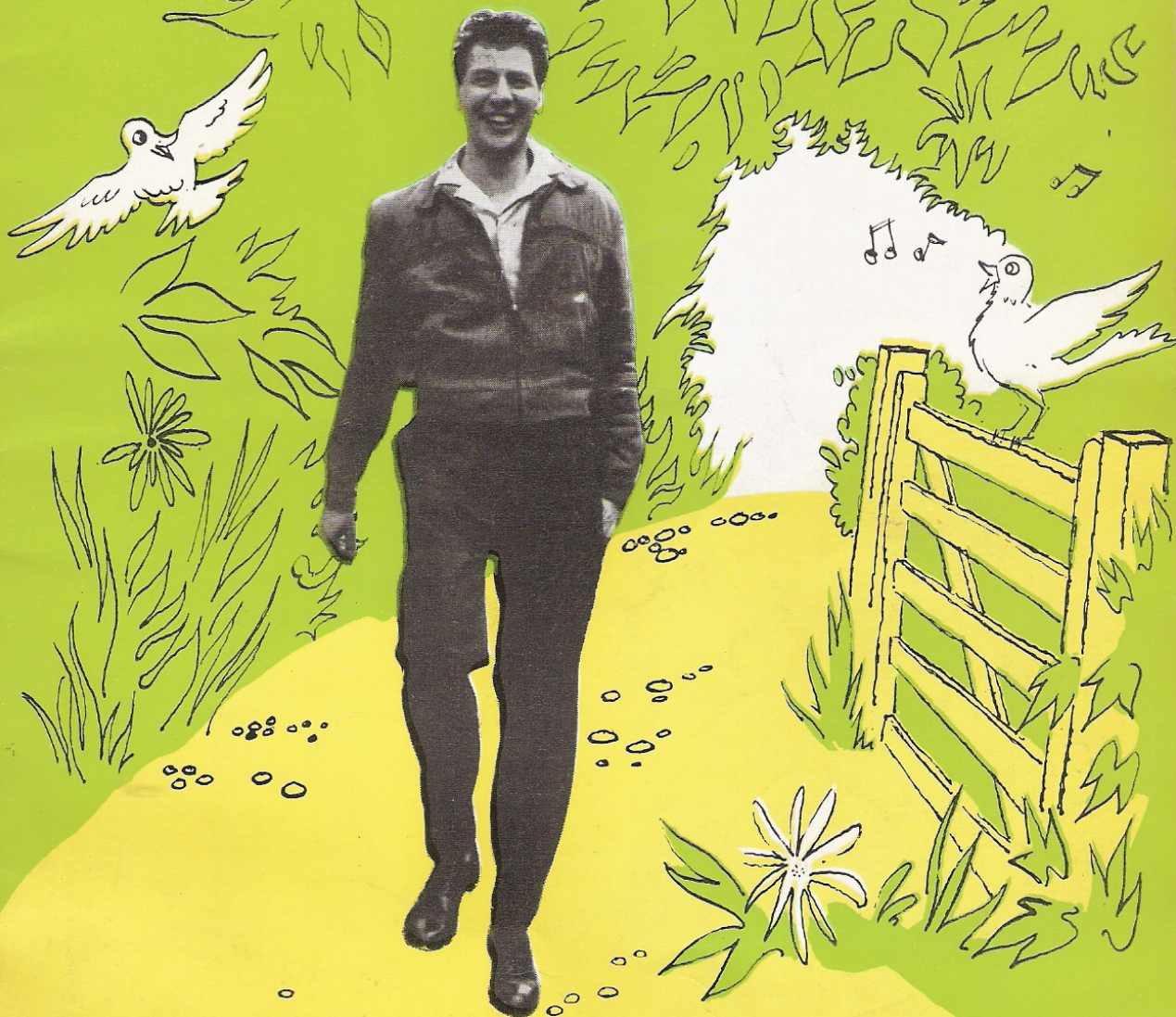


123
122
121
120
119
118
117
116
115
114
113
112
111
110
109
108
107
106
105
104
103
102
101

Swinging down the Lane!



At the Famous 
LONDON PALLADIUM

PROGRAMME PRICE SIXPENCE



HONG KONG EMPORIUM

Here you can obtain
Oriental foods,
delicacies,
chinaware, fancy
goods, silks
umbrellas, lanterns
and decorative
articles.

**53 RUPERT ST.
LONDON, W.1**
Telephone: GER 8272

Near Globe Theatre, Shaftesbury Avenue
Open Daily 10 a.m. to 6 p.m.
Closed Thursdays 1 p.m.



"George—
George
please ring up . . .
GERrard 6847
. . . for a table—
*I want everything
Chinese tonight*"

HONG KONG Restaurant

58-60 Shaftesbury Ave., W.1

Fully Licensed—Open till 11 p.m.



QUALITY INN

ARGYLL STREET W.1
GER 5997

Restaurant

SAMPLE MENUS AND PRICES GLADLY SENT TO YOU ON REQUEST

ACE VARIETY THEATRE OF THE WORLD

THE LONDON PALLADIUM

UNDER THE DIRECTION OF VAL PARNELL

Proprietors — MOSS' EMPIRES, Ltd.
Chairman and Joint Managing Director — PRINCE LITTLER, C.B.E.
Joint Managing Director: LESLIE A. MACDONNELL, O.B.E.
Artistes Booking Control CISSIE WILLIAMS Resident Manager GEORGE MARGRAVE
Area Supervisor E. E. BRICKNELL Stage Director ... JACK MATTHEWS
Advertising Manager A. A. COOMBS Press Representative JOHN M. NEIMAN

6.15 TWICE NIGHTLY **8.45**

Terminates approx. 8.25

Terminates approx. 10.55

SPECIAL SATURDAY MATINEES at 2.40
OCTOBER 10th, 17th, 24th & 31st

All Seats Bookable in advance 5/- to 16/6

Postal Applications should contain stamped addressed envelope

BOX OFFICE OPEN 10 a.m. to 9.30 p.m. (Box Office Manager: HARRY CLAFF)
Telephone: GERRARD 7373 to 7376 and GERRARD 6166 and 6167

OUR CHRISTMAS ATTRACTION OPENS DEC. 23rd

VAL PARNELL presents

LONDON'S MOST LAVISH PANTOMIME

HUMPTY DUMPTY

PRODUCED BY ROBERT NESBITT

with

HARRY SECOMBE

GARY MILLER

SALLY SMITH ROY CASTLE

AND GREAT COMPANY

BE WISE — BOOK NOW

*The bicycles used exclusively
in "Swinging down the Lane" are*

HERCULES — of course!

★ See your local Hercules dealer or write for Free Catalogue to Dept. L.P.
The Hercules Cycle & Motor Co., Ltd., Britannia Works, Handsworth, Birmingham 21

ACE VARIETY THEATRE OF THE WORLD



THE RESTAURANT OF GOOD TASTE!

VERREY'S

LUNCH/DINNER 15/- for four courses
or a la carte

"80 Dishes to choose from"

Pre-theatre meals served
from 6 p.m.

233, REGENT ST., W.1

(1 min. from this theatre) REG. 4495

Ample Parking Facilities

**OPEN TILL MIDNIGHT
FULLY LICENSED**

Murray's Cabaret Club

BEAK STREET, REGENT STREET, W.1



NOW! THE CIRCUS COMES TO TOWN!
THE BIG TOP
THE MOST FABULOUS FANTASTIC
NEW PRODUCTION EVER ATTEMPTED
YOU'LL GASP WITH ASTONISHMENT!!

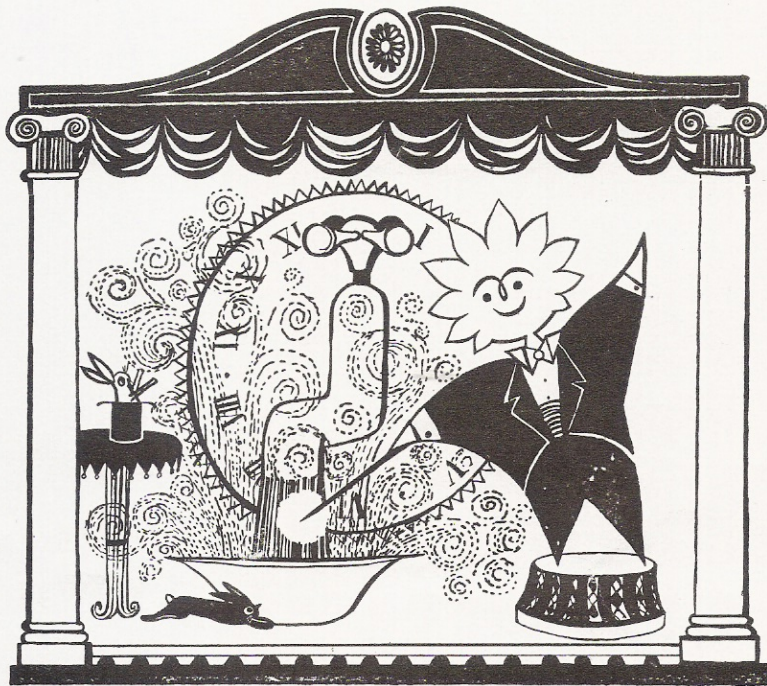
At London's
Oldest
Luxury
Club

DINE from 7.30 p.m. **DANCE** till 3 a.m.
and see at 10 and 1 a.m. 50 minutes of the
**LARGEST AND MOST LAVISHLY
STAGED FLOOR SHOW IN TOWN**

which in its huge cast includes
45 OF ENGLAND'S LOVELIEST SHOWGIRLS

PHONE. GER. 4623, 3241. 6862
SPECIAL FACILITIES FOR VISITORS

ACE VARIETY THEATRE OF THE WORLD



Top of the Bill

When it's variety you're after, Mr. Therm's act goes over big—his hot water magic is always an instantaneous success. With a turn of a tap he can cope with home laundry, washing up, shaving, or unlimited hot baths for the family. Put him on to play to a full house, and listen to the applause!

Talent scouts are invited to rehearsals at any of Mr. Therm's gas showrooms. Bath heaters from about £22; multipoints from about £39.

NORTH THAMES GAS

ACE VARIETY THEATRE OF THE WORLD

Swinging down

Presented by VAL PARNELL and BE

Produced by ROBERT N

A CITY STREET

(Words by George Carden. Music by Cyril Ornadel)

The People who live in a town: THE ENSEMBLE
The Man in a Macintosh : MAX BYGRAVES

A COUNTRY LANE

("Swinging Down the Lane" by Leslie Bricusse

MAX BYGRAVES and The Girls and Boys

A FARMYARD

("Out of Town" by Leslie Bricusse

MAX, Milkmaids and "The Meadowsweet Six"

introducing

THE SCHALLER BROTHERS

A RAILWAY STATION

(by Leslie Bricusse and Dave Freeman

The Traveller: MAX BYGRAVES

A CROSS ROADS

The "Hercules" Cyclists: The Girls
The Picnic Party: The Boys
The Country Girl: ALETA MORRISON

ONE MAN AND HIS DOG

BOB WILLIAMS and "Friend"

RIVERSIDE NIGHTS A Summer Serenade (Words and Music by Phil Park)

(a) HENLEY - 1910

The Winning Crew: George Mitchell Singers
Their Admirers: The Girls
The "Deb of the Year" ELIZABETH LARNER

(b) NO FISHING

The Angler: MAX BYGRAVES
The Menace: Keith Hamshire
The Policeman: Ossy Whitaker

(c) RHYTHM ON THE RIVER

THE PETERS SISTERS

(d) JAZZ at EEL PIE ISLAND (Words by George Carden. Music by Cyril Ornadel)

The Group: THE WANTED FIVE
The "Beat" Generation: The Girls and Boys

INTERMISSION

FIRST
PERFORMANCE
FRIDAY
MAY 29th, 1959

FULLY LICENSED BARS IN ALL PARTS OF THE THEATRE

down the Lane!

VAL PARNELL and BERNARD DELFONT

Produced by ROBERT NESBITT

LET'S GO TO MAX'S PLACE

THE VERANDAH

The House Guests: The Girls and Boys

introducing

HOPE and KEEN

THE BILLIARD BAR

—ROB MURRAY

THE VERANDAH BY MOONLIGHT

ELIZABETH LARNER

and the

George Mitchell Singers

THE PLAYROOM

Harry Jacobson and his Piano
evoke "A MOONLIGHT RHAPSODY"

with

ALETA MORRISON

and the Dancers

MAX ENTERTAINS

accompanied by BOB DIXON

THE PARTY'S OVER

The Entire Company

REG COLE and The PALLADIUM ORCHESTRA

Orchestrations by MAX HARRIS, EDDIE MORDUE, RONNIE HAZELHURST, BOB RICHARDS
BURT RHODES, RONALD HANMER, TED BRENNAN
"A Moonlight Rhapsody" composed by DEREK SCOTT

The Dancing Girls—Mary Allen, Karen Andrews, Marcia Bard, Maureen Blaine, Rosalind Caldas, Valerie Cottrell, Valerie Dorling, Elizabeth Field, Patricia Hopper, Pauline Hartwell, Pamela Hoult, Shirley Hafey, Janet Mahoney, Jean Paice, Pauline Scott, Tessa Sollom, Loretta Steven, Joan Jarvis.

The Dancing Boys—David Healey, Tony Kinner, Andrew McKenzie, Andrew Morrison, Kevan Regan, Steve Trayner, Jeffrey Taylor.

Speciality Dancing Group—Angela Bracewell, Claire Courtney, Bernard Eastoe.
Ballet Master—Desmond Graham

George Mitchell Singers—Richard Alda, Glen Blake, Gill Dalzell, Keith Lee, Peter Murray, Bill Richards, Dennis Sears, Peter Whitaker

Personal Assistant to Robert Nesbitt—Phil Park

Costumes executed by R. St. John Roper Ltd. Scenery constructed and painted by Key Studios Ltd. Floral decorations and foliage by Floral Decor. Metal work by S. F. Burkitt and Garden Craft Ltd. Wigs by Nathanwigs. Shoes by Gamba. Special colouring by English and French Dying Company Ltd. Special materials by Dazians of New York. Properties by Key Studios, Stage Craft and George Drury. Nylon Stockings by Kayser Bondor. Max Bygraves suits by Sydney Stanford Ltd. his ties by Hardy Amies

**FIRST
PERFORMANCE
FRIDAY
MAY 29th, 1959**

PLEASE NOTE—PHOTOGRAPHING IN THE THEATRE IS FORBIDDEN



MAX BYGRAVES

RECORDS EXCLUSIVELY FOR DECCA

You need hands; Tulips from Amsterdam F 11004

Coming shortly

MAX AND TED

Twelve hit songs
of the Twenties

with **TED HEATH
AND HIS MUSIC**

including Peg o' my heart;
Paddlin' Madelin' home;
Cecilia; When my baby
smiles at me; Don't bring
Lulu; Jealous; Just a girl
that men forget

In Stereo and Mono



Please ask your dealer for details of other Max Bygraves records. Details of all Decca-group new issues are to be found in Records Magazine: 16 pages of pictures and features to interest all record enthusiasts—your monthly guide to the best of the new records (sixpence from your dealer or newsagent).

THE DECCA RECORD COMPANY LTD DECCA HOUSE ALBERT EMBANKMENT LONDON SE11

ACE VARIETY THEATRE OF THE WORLD



*Some of the Stars
in
Swinging down the Lane!*

The Management reserve the right to refuse admission to the Theatre and to change, vary or omit without previous notice any item of the programme.

In accordance with the requirements of the London County Council.

1.—The public may leave at the end of the performance or exhibition by all exit doors and such doors must at that time be open. 2.—All gangways, corridors staircases and external passage ways intended for exit shall be kept entirely free from obstruction whether permanent or temporary. 3.—Persons shall not be permitted to stand or sit in any of the gangways intersecting the seating or to sit in any of the other gangways. If standing be permitted in the gangways at the sides and the rear of the seating, it shall be limited to the numbers indicated in the notices exhibited in these positions. 4.—The safety curtain must be lowered and raised in the presence of each audience.



**"BOOTH'S
and
TONIC"**

Just say
BOOTH'S
THE FINEST DRY GIN



BY APPOINTMENT
TO HER MAJESTY THE QUEEN



GIN DISTILLERS
BOOTH'S DISTILLERS LIMITED



... at
the
theatre
bar
take
the
necessary

Schwepes

ACE VARIETY THEATRE OF THE WORLD



THE CRAZY GANG are back at the **VICTORIA PALACE**

6.15 · **TWICE NIGHTLY** · **8.45**

JACK HYLTON

presents

THE CRAZY GANG

**NERVO
& KNOX**

**BUD
FLANAGAN**

**NAUGHTON
& GOLD**

and

"Monsewer" EDDIE GRAY

in their new Revue

"CLOWN JEWELS"

**PETER GLAZE THE KEN-TONES KAZBEK & ZARI
THE CROFT TWINS THE LYNTON BOYS
SONIA REES**

20 · JOHN TILLER GIRLS · 20

Comedy directed by **CHARLES HENRY**

Orchestra under the
direction of **JACK ANSELL**

**Staged by
ALEC SHANKS**

Choreography by
JOAN DAVIS

ACE VARIETY THEATRE OF THE WORLD

**for your
Leisure
for your
Pleasure**



Vocal gems from
CHU CHIN CHOW
sung by INIA TE WIATA
JULIE BRYAN, BARBARA LEIGH
CHARLES YOUNG
H.M.V. CLP1269



IVOR NOVELLO
His Greatest Songs
sung by VANESSA LEE
IVOR EMMANUEL, JULIE BRYAN
MARION GRIMALDI
with the voice of IVOR NOVELLO
H.M.V. CLP1258



TONI DALLI

The Student Prince
and other famous Melodies
including: Deep in my heart dear;
If I loved you; Santa Lucia;
The world is mine tonight;
-Your tiny hand is frozen;
COLUMBIA 33SX1127



**THE
PLATTERS ON PARADE**

Titles include: Bewitched;
Someone to watch over me;
I'll get by; Temptation;
In the still of the night
MERCURY MMC14010



RUSS CONWAY

Songs to sing in your bath
including: Don't fence me in;
I'm forever blowing bubbles;
April showers; Silver dollar;
By the light of the silvery moon;
COLUMBIA 33SX1149

These are all 33 1/3 r.p.m. Long Playing Records, price 34/1d. each

E.M.I. RECORDS LTD., 8-11 Great Castle Street, London, W.1