

At the Famous
London PALLADIUM



“STARS in YOUR EYES”

PROGRAMME
ONE SHILLING

HONG KONG

EMPORIUM

Here you can obtain
Oriental foods,
delicacies,
chinaware, fancy
goods, silks
umbrellas, lanterns
and decorative
articles.

**53 RUPERT ST.
LONDON, W.1**

Telephone: GER 8272

Near Globe Theatre, Shaftesbury Avenue

Closed Thursdays 1 p.m.

Open Daily 10 a.m. to 6 p.m.



"George —
George
please ring up . . .
GERrard 6847
. . . for a table—
*I want a real Chinese
meal tonight"*

HONG KONG Restaurant

58-60 Shaftesbury Ave., W.1

Fully Licensed—Open till 11 p.m.

ON YOUR NEXT VISIT to the PALLADIUM

**ARRANGE FOR YOUR PARTY
— LARGE OR SMALL —**



TO EAT NEXT DOOR AT THE

QUALITY INN

ARGYLL STREET W.1
GER 5997

Restaurant

SAMPLE MENUS AND PRICES GLADLY SENT TO YOU ON REQUEST

London

PALLADIUM

UNDER THE DIRECTION OF LESLIE A. MACDONNELL, O.B.E.

Proprietors: MOSS' EMPIRES, Ltd.

Chairman: PRINCE LITTLER, C.B.E.

Managing Director: LESLIE A. MACDONNELL, O.B.E.

Joint General Managers:
DAVID WILMOT & HARRY CLAFF

Artistes Booking Control:
CISSIE WILLIAMS

Advertising Manager:
A. A. COOMBS

Stage Director:
JACK MATTHEWS

Press Representative:
JOHN M. NEIMAN

Musical Supervisor: OWEN WALTERS

Area Supervisor:
E. E. BRICKNELL

Chief of Production Department:
PETER PENROSE

TWICE NIGHTLY AT 6.15 & 8.45
MATINEE EACH SATURDAY AT 2.40

ALL SEATS BOOKABLE IN ADVANCE 5/- to 16/6

Phone: GERard 7373-6 and GERard 6166-7

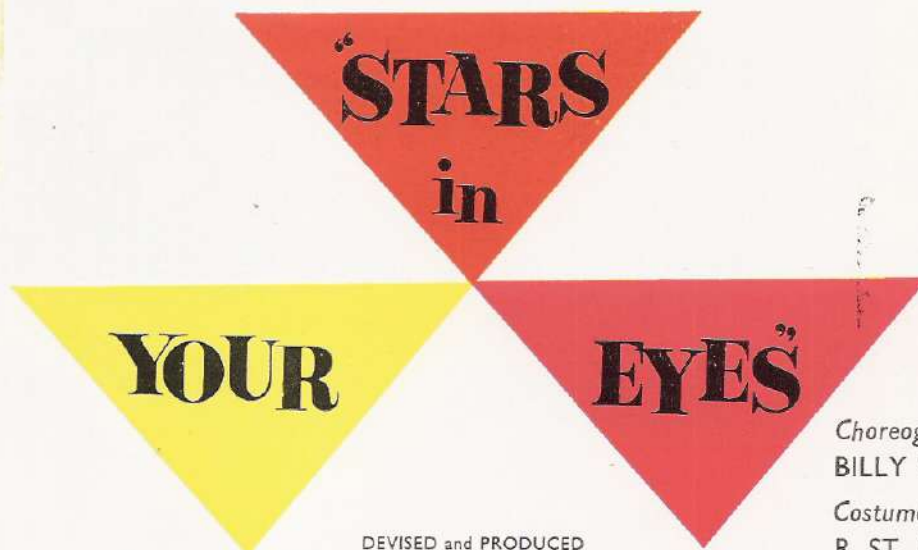
BOX OFFICE OPEN 10 a.m. to 9.30 p.m.

Box Office Control: HARRY CLAFF

Postal Applications should include a stamped addressed envelope.

LESLIE A. MACDONNELL & BERNARD DELFONT

present



DEvised and PRODUCED

by

ROBERT NESBITT

Choreography by
BILLY PETCH

Costumes by
R. ST. JOHN ROPER

Decor by
TOD KINGMAN and
EDWARD DELANY



STATE EXPRESS 555

*The Best Cigarettes
in the World*

The House of STATE EXPRESS, 210 PICCADILLY, LONDON, W.1.



Cliff
RICHARD

Born in India, Cliff returned to England with his parents at the age of 8. Whilst still at school he joined a local skiffle group and in an incredibly short time was leading his own group and well on the way to becoming one of Britain's top stars. His recording of "Livin' Doll" was in the Top Twenty charts for 14 weeks, and he has recently toured America with tremendous success.



Russ
CONWAY

During the war Russ Conway served in both the Merchant and Royal Navy and won the D.S.M. for "gallantry and devotion to duty" during mine-sweeping operations. After a variety of jobs Russ was asked to accompany some artistes for a TV rehearsal; he did so and found a new career in showbusiness. A recording contract followed and it was not long before he hit the headlines with his own compositions such as "Side Saddle," "Roulette" and "China Tea."





THE RESTAURANT OF GOOD TASTE!

VERREY'S

LUNCH/DINNER 15/- for four courses
or a la carte

"80 Dishes to choose from"

Pre-theatre meals served
from 6 p.m.

233, REGENT ST., W.1

(1 min. from His Theatre) REG. 4495

Ample Parking Facilities

OPEN TILL MIDNIGHT
FULLY LICENSED

Murray's Cabaret Club

BEAK STREET, REGENT STREET, W.1



NOW at MURRAY'S

THE MOST EXOTIC
EASTERN SPECTACLE
EVER PRESENTED

Arabian Rhapsody

At London's
Oldest
Luxury
Club

LONDON'S MOST SENSATIONAL AND
COLOURFUL FLOOR SHOW PRODUCTION

1001 Nights of the Mystic East—in ONE!

DINE from 7.30 p.m. DANCE till 3 a.m.

and see at 10 and 1 a.m. 50 minutes of the
LARGEST AND MOST LAVISHLY
STAGED FLOOR SHOW IN TOWN

which in its huge cast includes

45 OF ENGLAND'S LOVELIEST SHOWGIRLS

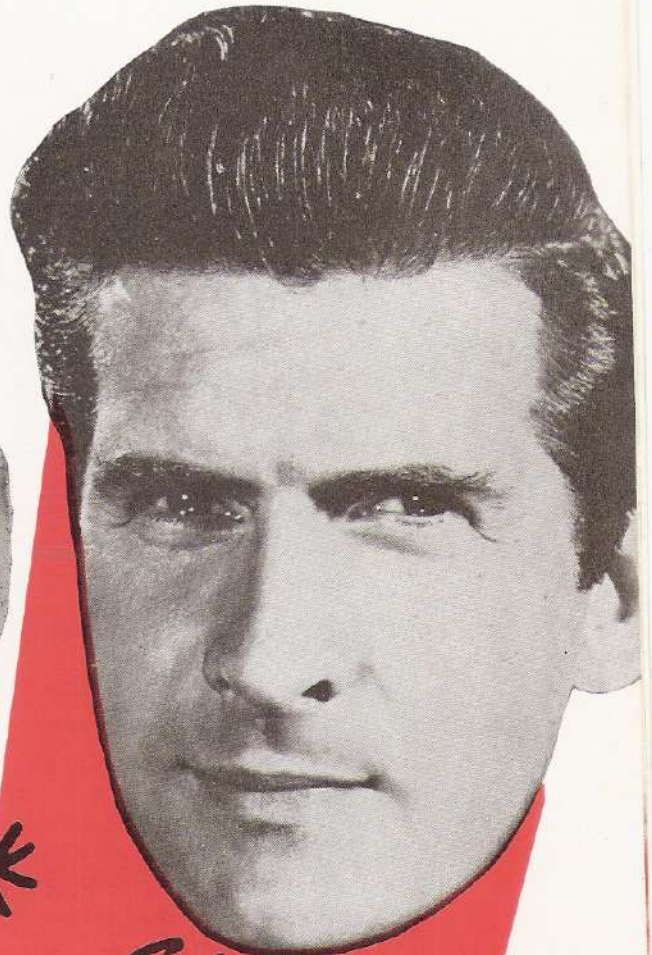
PHONE. GER. 4623, 3241, 6862

SPECIAL FACILITIES FOR VISITORS



Joan
REGAN

Vivacious Joan Regan has her Bank Manager to thank for her entry into showbusiness. It was while talking to him one morning that she mentioned her ambition to sing. He introduced her to a theatrical agent and Joan's talent took it from there. She is married to the Palladium's Joint Manager, Harry Claff, and they have three children, two boys and a girl.



Edmund
HOCKRIDGE

Tall, good-looking Canadian Edmund Hockridge has made his mark in Britain by starring in no less than four American musicals in the West End. He made his first broadcast in London whilst serving with the Royal Canadian Air Force and in 1949 was voted the most popular male singer on Canadian Radio.



LESLIE A. MACDONNELL
AND
BERNARD DELFONT

present

"STARS

in

SEEING STARS

(Lyrics by Phil Park)

THE PALLADIUM GIRLS AND BOYS

introduce The Stars

EDMUND HOCKRIDGE

JOAN REGAN

CLIFF RICHARD

RUSS CONWAY

who introduce The Newcomers

BILLY DAINTY

DES O'CONNOR

RON PARRY

Devised & Pr

by

ROBERT N

"WE MADE IT" BILLY, DES and RON

(Lyrics and Music by Phil Park)

FIRST MAN IN - BILLY DAINTY

"CRANBERRY CORNER"

(Music and Lyrics by Hal Richardson and John Klein)

The Rover EDMUND HOCKRIDGE

His Girl DOROTHY PENNEY

Good Friends and Neighbours THE ENSEMBLE

AFTER THE SHOW IS OVER

Two Cliff Richard Fans BILLY DAINTY, DES O'CONNOR

A Balletomane RON PARRY

DATE WITH JOAN

(Lyrics by Peter Meyers - Music by Ronald Cass)

JOAN REGAN and THE BOYS

INVITATION TO THE DANCE

JOAN REGAN and THE ENSEMBLE

introduce

THE SZONYS

THINGS ARE MOVING FAST

(Lyrics and Music by Mitch Revely)

BILLY DAINTY

The Nut Case: RON PARRY

MUSIC FOR A STARRY NIGHT - A Starlight Rhapsody

The Heavens - THE DANCING GIRLS

Serenade - JOAN REGAN & EDMUND HOCKRIDGE

On the Tiles - BILLY DAINTY & Pussy Cats

Nocturne - RUSS CONWAY

Singing the Blues - DES O'CONNOR & RON PARRY

Under the Moon - CLIFF RICHARD

Dancing in the Dark - THE ENSEMBLE

"STAIRWAY TO THE STARS"

JOAN REGAN and EDMUND HOCKRIDGE

INTERMISSION

ENJOY A GL
OF CHAMPA
(MOET & CHAI
IN THE PALM

FULLY LICEN
BARS IN ALL
OF THE THE

in

YOUR

EYES

First Performance
Friday, June 3rd, 1960

Devised & Produced
by
ROBERT NESBITT

SWINGIN' SILHOUETTES

(Music by Woolf Phillips)

THE GIRLS AND BOYS

"WITHOUT YOU"

(Music and Lyrics by Bock, Holofcener & Weiss)

BILLY DAINTY and EDMUND HOCKRIDGE

CONCERTO FOR YOU

RUSS CONWAY plays his Tunes

WORDS AND MUSIC

DES O'CONNOR

AN ITALIAN CAPRICE

An Operatic Barber: EDMUND HOCKRIDGE

Ragazzi e Ragazze - THE ENSEMBLE

introducing

THE ROMANO BROTHERS

ME AND MY SHADOWS

CLIFF RICHARD

MR. LARKIN GOES TO TOWN

DAVID KOSOFF and CLIFF RICHARD

THE END OF THE MILKY WAY

THE ENTIRE COMPANY

ENJOY A GLASS
OF CHAMPAGNE
(MOET & CHANDON)
IN THE PALM COURT

FULLY LICENSED
BARS IN ALL PARTS
OF THE THEATRE

REG COLE CONDUCTS THE PALLADIUM ORCHESTRA



“That’s
better-
that’s
BOOTH’S!”

The finest Dry Gin



... at
the
theatre
bar
take
the
necessary

Schweppes



Hear the hits on
DECCA
GROUP RECORDS

DECCA

Brunswick

LONDON

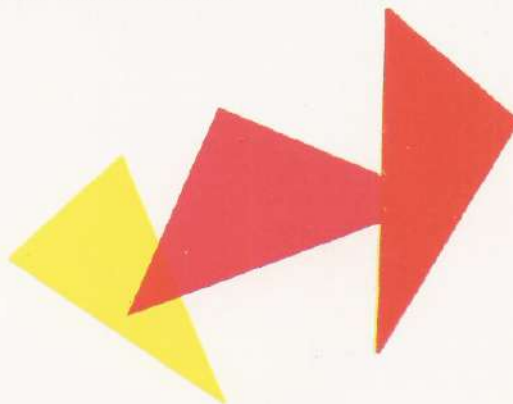
STEREO OR MONO RECORDS

RCA RECORDS

CORAL

Felsted

The Decca Record Company Ltd
Decca House Albert Embankment London S E 11





BEACHCOMBER

EUROPE'S FIRST POLYNESIAN RESTAURANT

NOW, the fabulous richness of South Sea Island cuisine and potent Pacific style drinks here, in the heart of London!

Beneath a roof of bamboo and palm fronds, to the sound of surf breaking on a coral strand, soft Hawaiian music accompanies the adventurous appetite! Superb Chinese or European food is served to the conventional diner.

Created and Supervised by MAY FAIR HOTEL

Berkeley Square, London, W.1. Reservations MAY 7777.

OPENING SOON





David
KOSSOFF

An Academy Award Winner, David Kossoff is well known for his roles in such films as "The Bespoke Overcoat", "A Kid For Two Hearts", and "Conspiracy Of Hearts", but it is "Alf Larkin" the character he portrays in the television series that has brought him the most fan mail. A man of many talents he is also a top flight furniture designer.



Billy
DAINTY



Des
O'CONNOR



Ron
PARRY

The
SZONYIS



ORIOLE

The Record of Distinction

THREE FOR THE "HIT" PARADE

1. LITTLE CHRISTINE

A lively melody -
a great beat!

c/w I'll love you forever

DICK JORDON

C.B. 1548

2. PAPER ROSES

Another hit for Maureen

c/w Please Understand

MAUREEN EVANS

C.B. 1550

3. MUSTAPHA

The Arabian melody now
the rage of the Continent

c/w Two Brothers

CLINTON FORD

C.B. 1551

ORIOLE RECORDS LIMITED
104 NEW BOND ST., LONDON, W.1

PROGRAMME continued . . .

The Dancing Girls:

Karen Andrews, Maureen Blaine, Joan Bell, Rosalind Caldas, Pauline Chamberlain, Pamela Chamberlain, Valerie Dorling, Valerie Field, Elizabeth Field, Pauline Hartwell, Barbara Hooper, Rosanne Jennings, Kathleen Lamb, Fay Llanina, Micky Merriman, Dorothy Penney, Pamela Riches, Pauline Scott, Patricia Taylor, Della Wicks.

The Dancing Boys

Eddie Ambrose, Paul Christian Tony Greenland, Fred Kitto, Andrew Morrison, Roy Staite, Jeffrey Taylor

Ballet Master DESMOND GRAHAM

The Bill Shepherd Singers

Kevin Grant, John Harvey, David Keller, Peter Murray, Tony Marlowe, Denis Sears

Orchestrations by: ALAN BRADEN, TED BRENNAN, REG BRIGGS, JOHNNY DOUGLAS, RONALD HANMER, DOUGLAS RANDALL, BURT RHODES, BOBBY RICHARDS, RAY TERRY, ARTHUR WILKINSON

Personal Assistant to ROBERT NESBITT PHIL PARK
Musical Associate " " " CYRIL ORNADEL

Costumes designed and executed by R. St. John Roper. Wigs by Nathanwigs. Special plastic wigs by Adele Rollstein. Shoes by Gamba. Hosiery by Finch & Smith. Special tinting by English and French Dyeing Company. Nylon stockings by Kayser Bondor. Make-up by Max Factor. Scenery built by Tod Kingman, Key Studios Ltd. and painted by Tod Kingman and Edward Delany. Decorative Metal Work by L. F. Calmels & Son and Garden Craft Ltd. Mechanical Staircase by Frank Burkitt Ltd. Properties by Key Studios and George Drury.

PLEASE NOTE:—PHOTOGRAPHING IN THE THEATRE IS FORBIDDEN

The Management reserve to themselves the right to refuse admission to the theatre and to make any change, vary or omit any part of the programme without previous notice.

In accordance with the requirements of the London County Council.

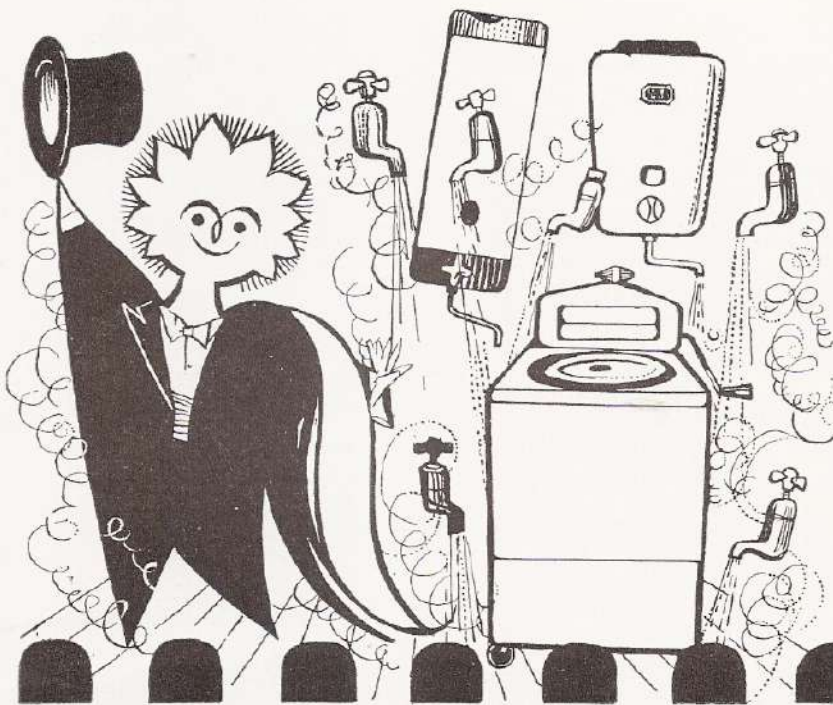
1.—The public may leave at the end of the performance or exhibitions by all exit doors and such doors must at that time be open. 2.—All gangways, corridors, staircases and external passage ways intended for exit shall be kept entirely free from obstruction whether permanent or temporary. 3.—Persons shall not be permitted to stand or sit in any of the gangways intersecting the seating or to sit in any of the other gangways. If standing be permitted in the gangways at the sides and the rear of the seating, it shall be limited to the numbers indicated in the notices exhibited in those positions. 4.—The safety curtain must be lowered and raised in the presence of each audience.

Where do we go from here?

where their new license enables you to have a drink on The Terrace while you watch the fabulous floorshows or-if you wish-to enjoy a light supper. Second Floor show begins 11.45 The Terrace is open until 1.30 a.m.

Only a few mins.
away from this
theatre at Hippo-
drome Corner
Tel. REG. 5051

to the **TALK OF THE TOWN**

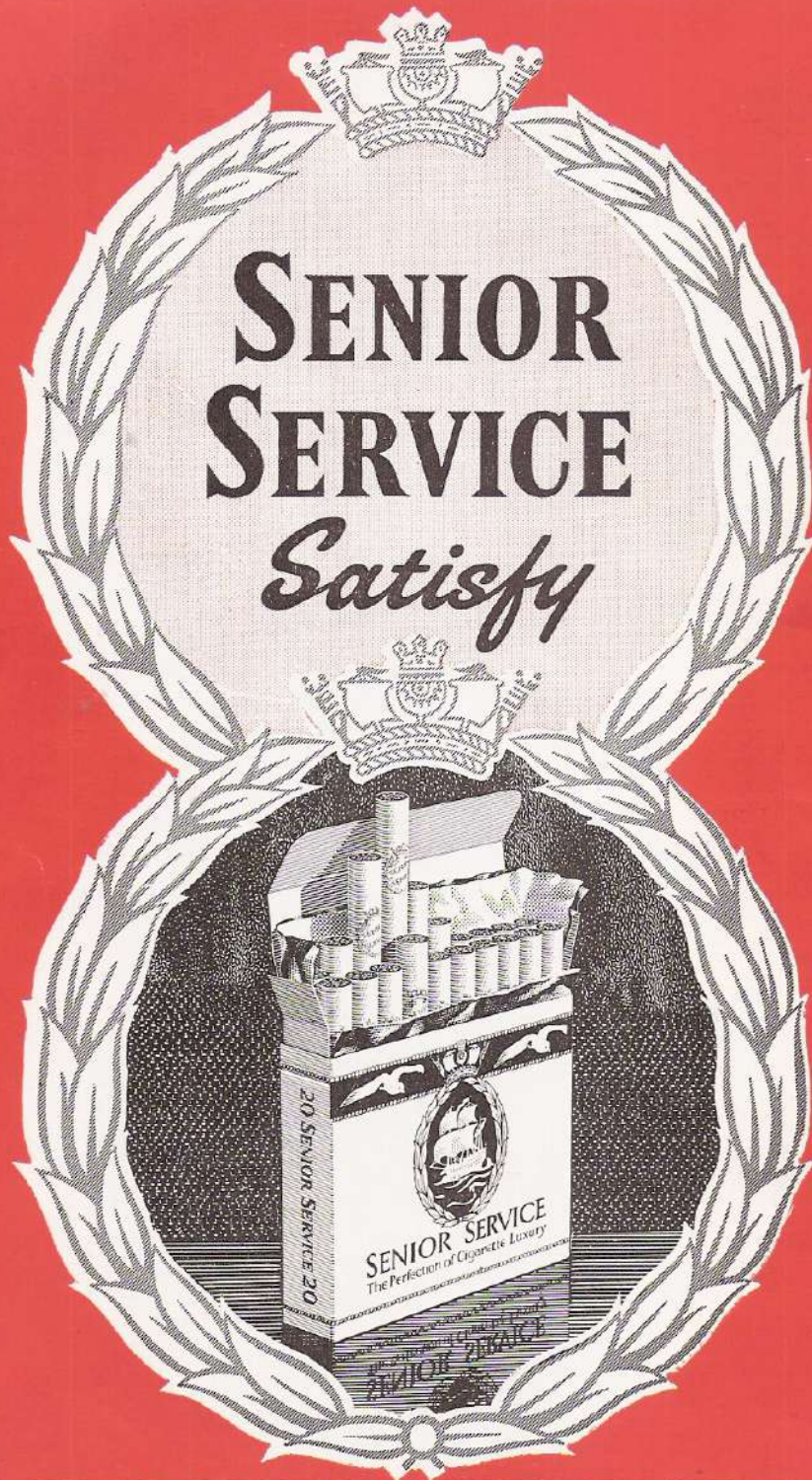


Top of the Bill

When it's variety you're after, Mr. Therm's act goes over big—his hot water magic is always an instantaneous success. With a turn of a tap he can cope with home laundry, washing up, shaving, or unlimited hot baths for the family. Put him on to play to a full house, and listen to the applause !

Talent scouts are invited to rehearsals at any of Mr. Therm's gas showrooms. Bath heaters from about £18; multipoints from about £32.

NORTH THAMES GAS



WELL MADE · WELL PACKED

Published by Stilwell Darby & Co. Ltd., Advertising Contractors, 24 Old Burlington Street, London, W.1
Tel. No. REGent 8671 (5 lines) Printed by John Waddington Ltd., London