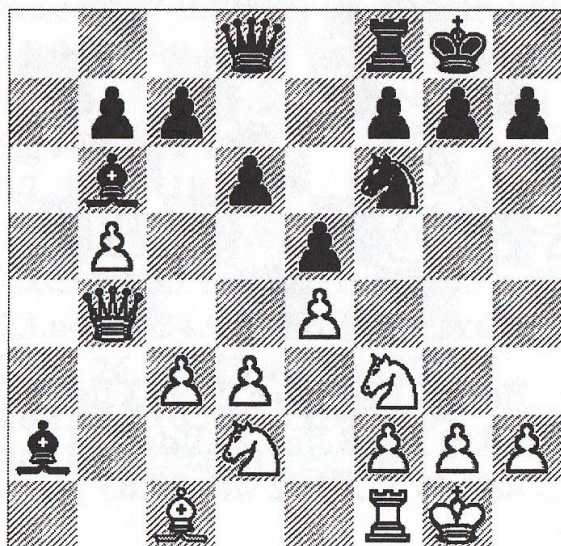


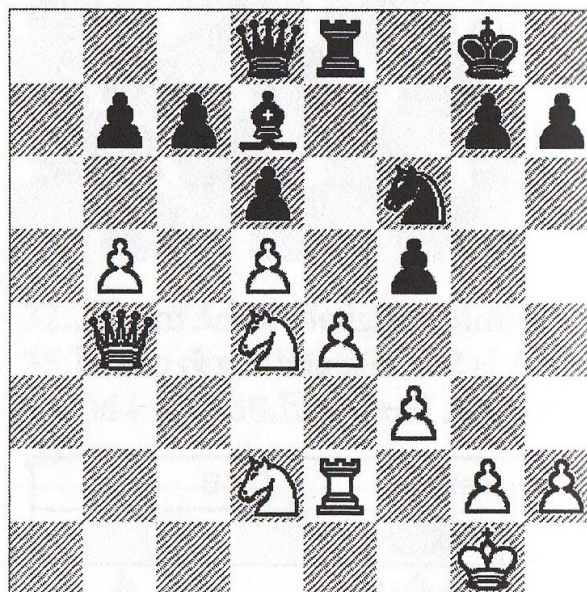
29.♗xd5 ♖e1+ 30.♕h2 b5 31.g4
 ♖8e5 32.a4 bxa4 33.c4 h5
 34.gxh5 ♖xh5 35.♖f3 ♖e6 36.♖a3
 ♖d6 37.♖xa4 ♕xd5 38.♖xa7+ ♕e6
 39.♖e2+ ♖e5 40.♖xe5+ ♕xe5
 41.♖a5!
 The point.
 41...♕e4 42.♖xd5 ♖b6 43.♖b5 1-0

Giulio Piano		C54
○	Dyke L	
●	Tham YM	
NDKO		

1.e4 e5 2.♗f3 ♗c6 3.♕c4 ♕c5
 3...♗f6 4.d3 ♕c5 5.c3 d6 6.b4 ♕b6
 7.a4 a5 8.b5 ♗b8 9.0-0 ♕g4
 10.♕g5 h6 11.♕h4 g5 12.♕g3 ♖e7
 13.h3 ♕h5 14.♖e1 g4 15.hxg4 ♖g8
 16.gxh5 ♖xg3 17.♕h2? ♖xf3! 0:1
 Godfrey-Baron, a 1997 CT game.
 4.c3 ♗f6 5.b4 ♕b6 6.d3 d6 7.0-0
 0-0 8.♖b3 ♕g4 9.♗bd2 a5 10.b5
 a4 11.♖c2 ♗a5 12.♖xa4 ♗xc4
 13.♖xc4 ♕e6 14.♖b4 ♖xa2
 15.♖xa2 ♕xa2 (D)



16.d4?
 ♖16.c4 Sets the ♗'s up on the right squares for the c1♕ – and cuts Black's ♕ off.
 16...exd4 17.cxd4 ♖e8 18.♖e1 ♕e6
 19.d5 ♕d7 20.♕b2 ♗g4! 21.♖e2 f5
 22.♕d4 ♕xd4 23.♗xd4 ♗f6 24.f3
 (D)



24...♖a8!
 Threatening ♖a7 and ♖a1+.
 24...♗xd5 25.♖c4
 25.b6 fxe4 26.fxe4
 ♖26.♗xe4
 26...♖a1+ 27.♕f2 ♖a8! 28.bxc7
 ♖a4+ 29.♗2f3 ♖xb4 0-1

Centre-Counter		BO1
○	Taylor SJG	
●	Lewis C	
NDKO		

1.e4 d5 2.exd5 ♖xd5 3.♗c3 ♖a5
 4.♗f3 ♕g4 5.b4 ♖h5 6.♕e2 e6
 7.♕b2 ♗f6 8.a3 ♕d6 9.♗b5 ♕f4