

A WORLD CLASS COLLECTION

EDUCATION VISITS

Our education programme is curriculum specific and can be tailored to meet your school's particular requirements.

MUSEUM SHOP

Our shop has an extensive range of collectables on a commission sales basis. Entry to this area is free.

CORPORATE ENTERTAINMENT

We provide an interesting and unique environment for groups of up to 100 people.

SPECIAL EVENTS

We occasionally act as hosts for clubs and societies, ask to be informed.

TOURIST INFORMATION

We are Brighton's official Tourist Information Point.

OPENING TIMES

TUESDAY-FRIDAY 10AM - 5PM

SATURDAY 11AM - 5PM

SCHOOL AND BANK HOLIDAYS - PHONE OR GO TO WWW.BRIGHTONTOYMUSEUM.CO.UK FOR DETAILS

ADMISSION PRICES* (FROM 2015)

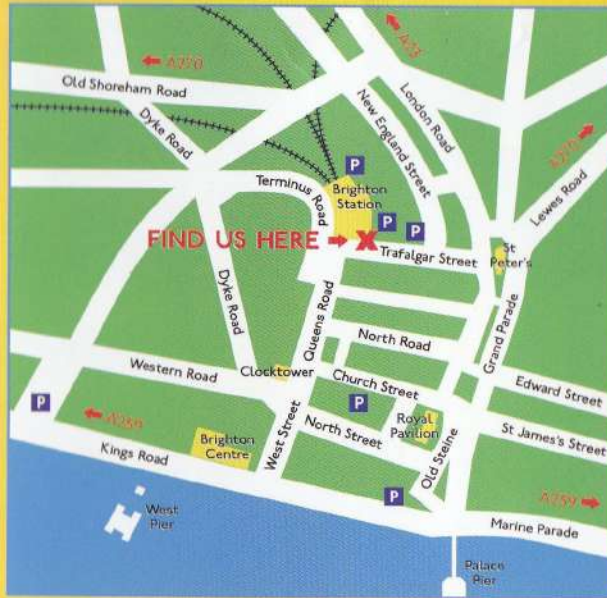
ADULTS	£6.50
SENIORS (60+)	£5.50
CHILD (4 TO 15) / STUDENT	£4.00
FAMILY (2 ADULTS + 3 CHILDREN)	£14.00
SCHOOLS & GROUPS (10+)	P.O.A.
DISABLED + 1 CARER (FREE)	£5.50

*PRICES INCLUDE VOLUNTARY DONATION WHICH HELPS TO RAISE FUNDS FOR MAINTAINANCE AND CARE OF EXHIBITS

DISABILITY ACCESS ARRANGEMENTS

We have disabled toilet facilities and a ramp. Please let the museum know in advance if you are bringing a wheelchair.

We reserve the right to change without notice the information in this leaflet. Visitors should note that circumstances may cause opening times to temporarily change.



Trafalgar Street runs downhill in front of the station forecourt, the Museum is under the bridge on the left.

52-55 TRAFALGAR STREET
BRIGHTON, BN1 4EB

REGISTERED CHARITY NO. 1001560

01273 749494

info@brightontoymuseum.co.uk

www.brightontoymuseum.co.uk

twitter.com/thetoymuseum

facebook.com/BrightonToyMuseum



ARTS COUNCIL
ACCREDITED



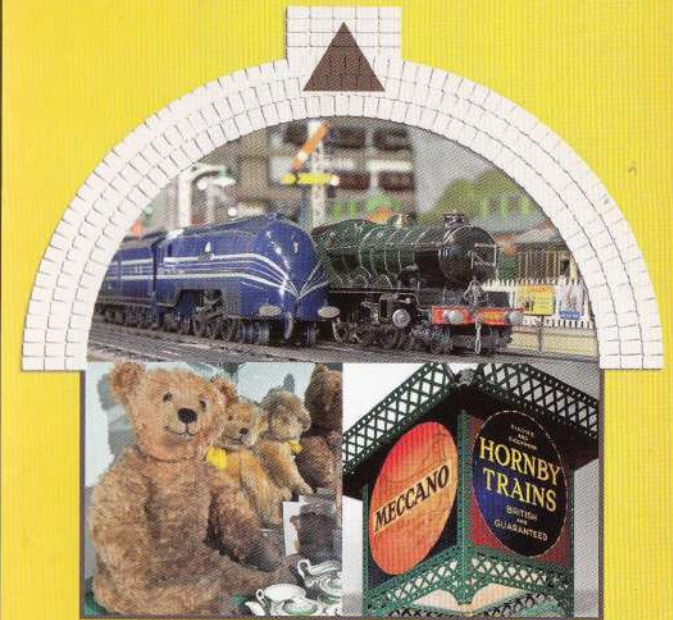
DESIGN BY



WWW.MATHEWKELLER.COM

BRIGHTON TOY and MODEL MUSEUM

UNDERNEATH THE FORECOURT OF
BRIGHTON RAILWAY STATION



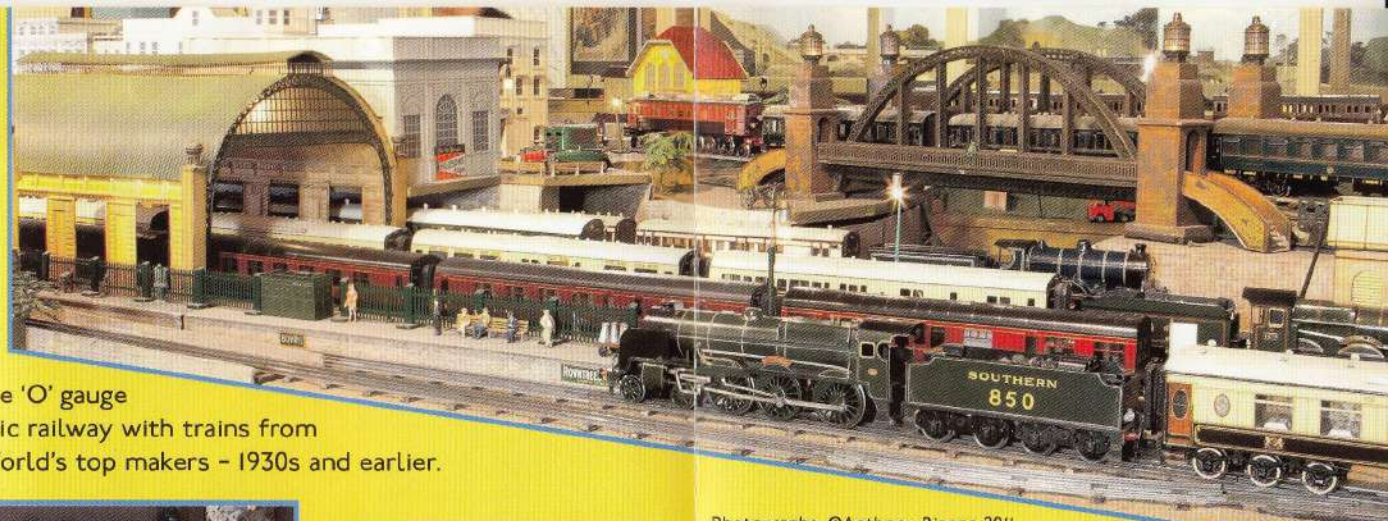
"An Aladdin's cave full
of wonderful things to
thrill the whole family"



WWW.BRIGHTONTOYMUSEUM.CO.UK

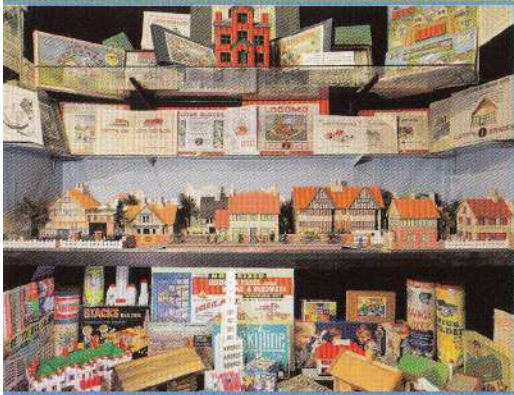


Boil the kettle! How we played in the 1950s. The little stove and utensils really work!



Unique 'O' gauge electric railway with trains from the World's top makers - 1930s and earlier.

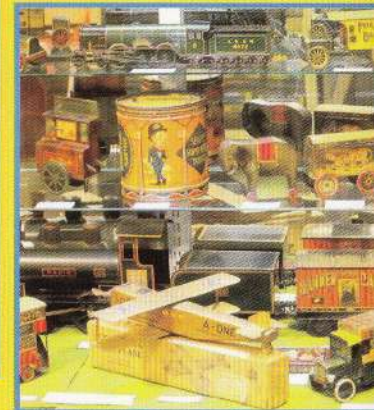
Photographs: ©Anthony Bianco 2011



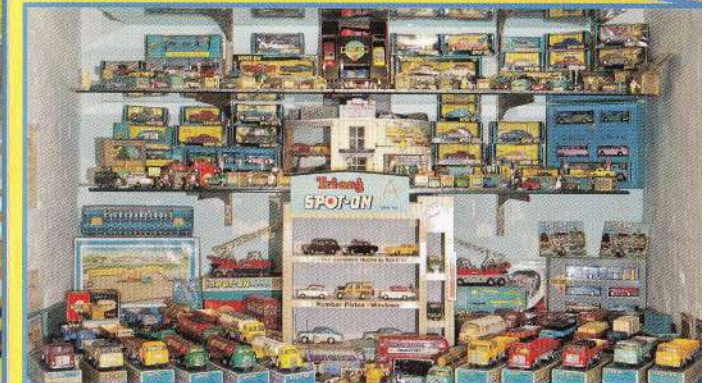
Practical construction experience for the young. Stone, tin wood and plastic - 1910 to 1980s



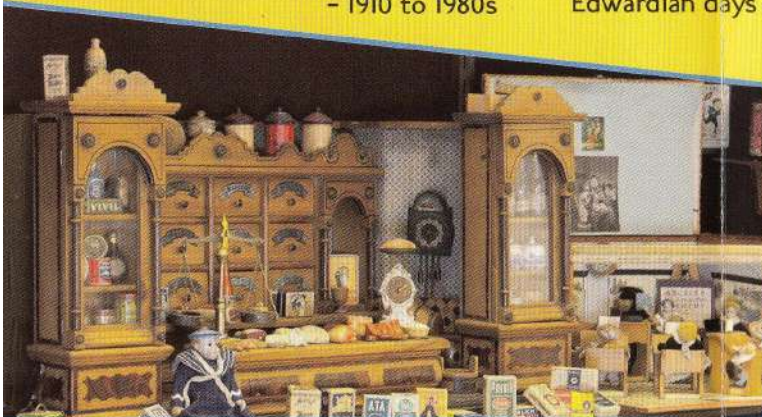
The amazing variety of soft toys from Edwardian days onwards. A World of little companions.



Antique and vintage biscuit tins in a variety of unusual forms



Unique SPOT-ON collection. Other diecast vehicle exhibits include Corgi, Dinky and Budgie.



Classic Bavarian shop and miniatures from 1910. Imagine the fun it gave to it's young shopkeeper and customers!

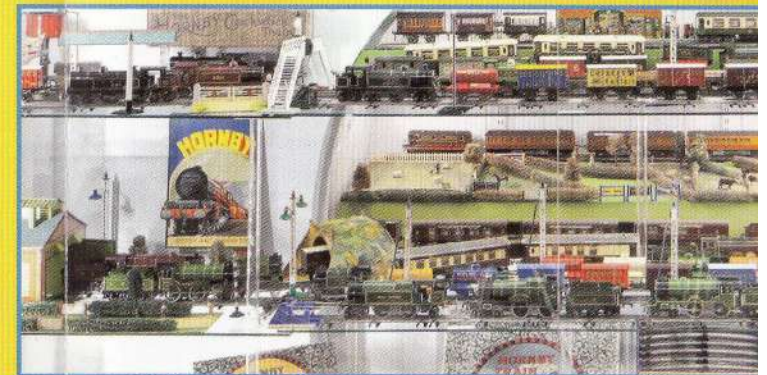
BRIGHTON TOY and MODEL MUSEUM



UNDERNEATH THE FORECOURT OF
BRIGHTON RAILWAY STATION

WWW.BRIGHTONTOYMUSEUM.CO.UK

01273 749494



The best public display of Hornby 'O' gauge trains - 1920-56